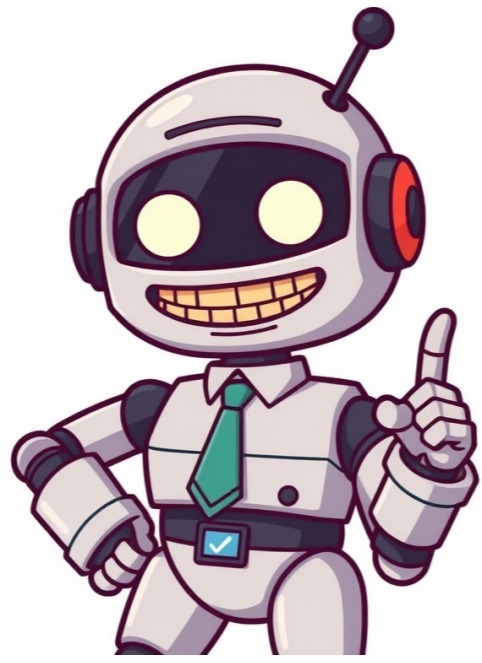


I'm not a bot























To ensure safe and proper usage of your new ceiling fan, please follow the installation instructions carefully. Inspect the product for any damage during transport and do not operate or install it if damaged. Remove all packaging materials and be careful not to throw away hidden accessories. Install the remote control holder on a suitable wall with two screws. Insert the 3V CR2450 battery into the battery compartment cover. Pair the remote control with the receiver by pressing the buttons simultaneously for 5 seconds. Please read this manual carefully and follow all instructions before assembling, installing, and using this product. Please keep these instructions for future reference. Page 17

Installation Instructions This remote control can only be used if the receiver can be inserted into the ceiling slot in a safe and correct manner. The maximum angle of inclination of the ceiling should not exceed. This could damage the receiver and cause an electric shock. Page 18 Installation Instructions 5. Connect the output of the remote control to the distance connector (3) to the mounting bracket of the ceiling fan (4). 6. Insert with caution the remote control in the space above the ball bearing into the remaining part of the support. Make sure... Installation Instructions INSTALLATION OF THE BATTERY 1 battery of type 3V CR2450 is necessary for the remote control to function. 1. When first using the remote control, remove the film from the battery before use. (Scheme 5a) 2. To replace the battery, unscrew the screw from the compartment cover (scheme 5b). Note : The screws do not detach from the cover. Page 20 Installation Instructions Within 60 seconds after connecting the receiver of the ceiling fan to the power source: Press the lighting button "" and the timer button "" for 8 hours simultaneously for 5 seconds, then release them. Installation Instructions REINITIALIZATION OF DEFAULT VALUES : If you want to reset your remote control so it is compatible with all receivers, please press the lighting button "" and the timer button "" for 8 hours simultaneously for 10 seconds; during this process, the indicator light will blink rapidly. Page 22 Ensure that the product does not come into contact with corrosive chemicals/solvents, abrasive cleaners, etc. Specifications N UGS 210667 / 210675 Tension nominal 220-240 V~ 50Hz Motor: 0.75 A max., use only with the CA motor of the ceiling fan alone Charge nominal Lamp: Max.100 W, 100 VA LED, non compatible with a variable... Page 23 Installation Instructions MANDO A DISTANCIA TCTL PARA VENTILADOR DE TECHO SKU# 210667 / SKU# 210675 Tension nominal: 220V - 240V~ 50Hz Gracias por adquirir este producto Lucci de calidad. Para garantizar un funcionamiento correcto y seguro, lea y siga todas las instrucciones detenidamente antes de montar, instalar y usar este producto. Page 24 Installation Instructions Do not use the cable of the controller for any other purpose than supplying power to the controller and connections to the equipment being controlled. Any external connection of the cable that is not part of the controller/circuit control may affect the functioning of the controller and void the warranty. ... Page 25 Installation Instructions 4. Connect the quick connector of the bracket (1) to the input of the remote receiver (2). 5. Connect the output of the remote receiver (3) to the socket of the ceiling fan casing (4). 6. Insert with care the remote receiver above the spherical joint and introduce it into the remaining space inside the support. Installation Instructions INSTALACION DE LA PILA El mando a distancia funciona con 1 pila de 3V CR2450. 1. Before using the remote control for the first time, remove the film from the battery. (Fig. 5a) 2. To replace the battery with a new one, loosen the screw of the compartment cover (Fig. 5b). Note : The screw does not detach from the cover. Page 27 Installation Instructions Press the lighting button "" and the timer button "8 hours"" simultaneously for 5 seconds and then release them. During this process, the indicator light will flash slowly. ... Installation Instructions RESTABLECIMIENTO A VALORES DE FABRICA: If you want to reset your remote control so it is compatible with all receivers, press the lighting button "" and the timer button "8 hours"" simultaneously for 10 seconds. During this process, the indicator light will flash rapidly. Page 29 Installation Instructions NOTA: When a button is pressed on the remote control, the LED indicator will blink and the remote control will vibrate when activated by buttons. The remote control has a memory function. If the fan or the light are turned off from the wall switch, it will memorize... Page 30 Installation Instructions Especificaciones SKU # 210667 / 210675 Tensin nominal 220 - 240V~ 50Hz Motor: 0.75 A mx. Usar solamente con el motor CA del ventilador de techo Carga nominal Luz: Mx.100W, 100VA LED, No atenuable Peso 0.2 kg/fuego Receptor: Al:28 mm An:80 mm L:125 mm... Page 31 Installation Instructions TELECOMANDO TOUCH PER VENTILATORE A SOFFITTO SKU# 210667 / SKU# 210675 Tensione nominale 220-240 V~ 50 Hz Grazie per avere acquistato questo prodotto Lucci di alta qualita. Per assicurare un funzionamento corretto e sicuro, leggere attentamente tutte le istruzioni prima di assemblare, installare e usare il prodotto. Conservare le istruzioni per futuro riferimento. Installation Instructions Do not exceed the maximum angle of inclination of the ceiling for avoiding damages to the receiver and the risk of electric shock. Consult the seller to know the maximum angle of inclination for ceiling fans with a remote control. Do not use a solid-state dimmer switch with this receiver for ceiling fans. ... Installation Instructions Marrone L (fase ventilatore) 220-240 N (neutro fase e luce) Alimentazione Giallo/Verde e dal soffitto Terra RICEVITORE DEL TELECOMANDO Corpo del ventilatore Fig. 3 INSTALLAZIONE DEL SUPPORTO PER TELECOMANDO (Fig. 4) 1. Fix the support for 1. Ajuste la vitorina con las dos varillas (Figura 4a). 2. Pagina 34 Instrucciones de Instalacin Pelcula de batera Figura 5b Figura 7b Figura 5a Figura 5c Instalar una batera CR2450 de 3V en el controlador. Asegurarse de que la polaridad de la batera sea correcta (Figura 6). Asegurarse de que la polaridad de la batera sea correcta. Figura Pagina 35 Instrucciones de Instalacin NOTA: asegurarse que el sistema electrico que alimenta cada ventilador est protegido por un interruptor. 3. Desconectar la velocidad de ajuste entre el soporte (1) y el cuerpo del ventilador de techo (4). 4. Conectar el soporte (1) a la entrada del receptor de control (2). 5. Conectar el receptor de control (3) y el ventilador de techo a la batera (Afb. 5a). 4. Mantener las teclas " " y " " 8-uurs timerknop de la afandesbedding a la vez durante 5 segundos y dejarla libre. La luz de control mostrar un patrn de pulsaciones lentas. 5. Activar el ventilador y cambiar la velocidad utilizando la afandesbedding para verificar que est funcionando correctamente y ajustar la conexin. Page 43 Instrucciones de Instalacin OP STANDAARD RECOVERED: Si desea restaurar la afandesbedding a un estado de reparo de todas las receptores, presione simultaneamente las teclas " " y " " durante 10 segundos, mientras que el indicador de luz mostrar una pulsacin rpida. Page 44 Instrucciones de Instalacin OPMERKING: Cuando se presiona una tecla en la afandesbedding, la luz LED se encender y trillar cuando las teclas estn activas. La afandesbedding tiene una funcin de memoria. Si el ventilador o la iluminacin es desconectado por un interruptor de la pared, entonces la ltima configuracin ser guardada y volver a estar estable en la prxima inspeccin. Page 45 Instrucciones de Instalacin Specificaties SKU # 210667 / 210675 Nominale spanning 220 - 240V~ 50Hz Motor: Max.0,75A, utilizar solo con la AC-motor del ventilador de techo Nominale belasting Lamp: Max. 100 W, 100VA led, no puede ser ajustado Gewicht 0.2 kg/set Ontvanger: h:28mm b:80mm l:125mm... Page 46 Instrucciones de Instalacin SKU# 210667 / SKU# 210675 220V - 240V~ 50Hz Lucci., todas... Page 47 Instrucciones de Instalacin NO estn incluidos en el manual del usuario/electrnicos, pueden afectar la funcin del elector y acortar la garanta. Este controlador es adecuado solo si el receptor puede colocarse dentro de la plataforma con seguridad. No supere la mayor tolerancia permitida ngulo de inclinacin de la plataforma. Se producir dao en el receptor y se producir una falla elctrica. Page 48 Instrucciones de Instalacin 3. Desconectar el soporte de ajuste entre el soporte (1) y el cuerpo del ventilador de techo (4). 4. Conectar el soporte (1) a la entrada del receptor de control (2). 5. Conectar el receptor de control (3) y el ventilador de techo a travs del soporte (4). 6. Page 49 Instrucciones de Instalacin TOPO Para que el controlador funcione, se necesita una sola batera de 3V CR2450. 1. Antes de utilizar el controlador por primera vez, retire la cubierta del compartimiento de la batera (Afb. 5a). The installation Guide for Lucci Fan Remote Control##ENDARTICLEManual for specific wiring configurations to prevent errors and ensure safety. This step is crucial for optimal functionality and performance. 2.3 Mounting the Fan and Receiver Start by unpacking and preparing all components. Mount the ceiling fan securely to the ceiling bracket, ensuring it is level and tightly fastened. Attach the canopy to cover the mounting hardware for a neat appearance. Next, install the remote receiver near the fan, typically inside the canopy or a designated housing. Use the provided screws to secure it firmly. Make sure the receiver is linked to the fan motor and light (if applicable) according to the wiring diagram. Finally, test the fan and remote to confirm proper operation. Always adhere to local safety standards and maintain a minimum distance of 300mm between the fan blades and any objects to ensure safe and efficient operation. 2.4 Initial Setup and Testing After mounting the fan and receiver, proceed with the initial setup. Turn on the mains power and ensure the fan is connected to the receiver. Use the remote to test basic functions: turn the fan on/off, adjust speed settings, and activate any additional features like the timer or light control. Verify smooth operation across all speed levels. Check the fans rotation direction and ensure blades are 300mm away from obstacles for safe operation. If the remote doesnt respond, refer to the troubleshooting section. Once everything functions correctly, your Lucci fan is ready for use. Proper setup ensures optimal performance and longevity of the device. Remote Control Features The Lucci fan remote offers 6 speed settings, on/off functionality, timer, and light control. It also includes features like fan direction and silent operation modes for enhanced comfort. 3.1 Speed Settings and Operation The Lucci fan remote offers 6 speed settings, providing precise control over airflow. Unlike standard AC fans with 3 speeds, this DC fan remote allows for more flexibility. Users can adjust fan speed using the dedicated buttons on the remote, ensuring optimal comfort. The remote operation is smooth and intuitive, allowing immediate control with a single press. It ensures seamless transitions between operational and standby modes. The speed settings are essential for energy efficiency, as they help conserve power when the fan is not in use. Pressing the button once activates or deactivates the fan, providing quick and reliable control. This feature is user-friendly, making it easy for anyone to operate the fan without confusion. The buttons responsiveness ensures seamless performance, enhancing overall user experience. 3.2 Fan On/Off Button Functionality The Fan On/Off button is a primary control feature on the Lucci remote, enabling users to power the fan on or off effortlessly. This button is designed for simplicity and convenience, allowing immediate operation with a single press. It ensures smooth transitions between operational and standby modes. The On/Off functionality is essential for energy efficiency, as it helps conserve power when the fan is not in use. Pressing the button once activates or deactivates the fan, providing quick and reliable control. This feature is intuitive and user-friendly, making it easy for anyone to operate the fan without confusion. The buttons responsiveness ensures seamless performance, enhancing overall user experience. 3.3 Additional Features (Timer, Light Control) The Lucci fan remote offers convenient additional features, including a timer and light control, enhancing user convenience. The timer function allows you to set the fan to turn off automatically after a selected duration, ranging from 1 to 8 hours, ensuring energy efficiency. This feature is easily programmed using the remote control. Additionally, some models include light control, enabling you to adjust brightness or toggle lights on and off. These features provide seamless integration of fan and lighting systems, offering a comprehensive control solution. The timer and light control options are designed to enhance comfort and energy savings, making them valuable additions to your fan system. Always refer to the manual for specific instructions on activating these features. Troubleshooting Common Issues Troubleshooting common issues with your Lucci fan remote? Inspect battery life, confirm all connections are secure, and verify that the signal is being received properly. Resetting the remote may resolve operational problems. If your Lucci fan remote isnt responding, start by checking the battery. Ensure they are correctly installed and not depleted. Verify that the receiver is properly connected to power and the fan. Check for any obstructions between the remote and receiver that might block the signal. If issues persist, try resetting the remote by removing the batteries for 10 seconds before reinstalling them. Ensure the remote is paired correctly with the receiver by following the pairing instructions in the manual. If none of these steps resolve the issue, contact customer support for further assistance or potential replacement. 4.2 Fan Not Turning On If your Lucci fan fails to turn on, first ensure the wall switch is in the on position and check your power supply. Verify that the remote control batteries are installed correctly and not depleted. Test the remote by pressing the Fan On/Off button. If the remote is unresponsive, check for signal obstructions or interference. Ensure the receiver is properly wired and connected to the fan motor. If the issue persists, inspect the wiring connections for any loose or damaged components. Resetting the remote by removing the batteries for 10 seconds may also resolve the problem. Consult the manual for further troubleshooting steps or contact customer support for assistance. 4.3 Speed Malfunction If your Lucci fans speed is not adjusting properly, start by checking the remote control buttons for dirt or damage. Ensure the remote is pointing directly at the receiver and there are no ##Check battery strength, ensure correct fan mode, and try resetting the remote or checking battery connections. If issues persist, consult the manual or contact customer support. Regular maintenance can prevent malfunctions. Follow manufacturer guidelines for troubleshooting and repairs to maintain optimal performance. Proper speed settings are essential for energy efficiency and comfort. Addressing the issue promptly can prevent further complications and ensure smooth operation. Resetting the remote can resolve many common issues. Always refer to the provided manual for specific instructions tailored to your Lucci fan model. Proper care and maintenance are crucial for preserving the functionality of your ceiling fan and remote control system. By following these guidelines, you can enjoy uninterrupted service from your Lucci fan. Resetting your Lucci Fan Remote: A Step-by-Step Guide to Resolve Common Issues and Enjoy Smooth Operation.Looking forward to enjoying uninterrupted service from your ceiling fan with the remote control, it's essential to address any common issues promptly. By following these instructions, you can ensure your remote operates smoothly and efficiently, providing you with the comfort and convenience you expect. Resetting the remote is a straightforward process that can resolve many issues, ensuring your Lucci fan continues to function as intended. If the problem remains unresolved after resetting, it's crucial to address it promptly to avoid further complications. Always maintain your remote control in good condition and follow the manufacturer's guidelines for optimal performance. Regular maintenance and timely repairs are key to preserving the functionality and longevity of your Lucci fan and remote control. Resetting the remote control is an essential step in maintaining the performance and longevity of your Lucci fan. By following these instructions, you can restore your remote's functionality and ensure it works seamlessly with your ceiling fan. If the issue persists, it may require a more detailed diagnosis or replacement, which should be handled by a qualified technician. By adhering to these guidelines, you can enjoy uninterrupted service and optimal performance from your ceiling fan. Remember to always follow safety precautions and manufacturer recommendations when performing any maintenance or repairs on your Lucci fan remote. Perform regular checks to ensure your remote operates smoothly by inspecting the battery and signal strength. Clean the buttons to prevent dust buildup and test all functions to identify any issues early. If the remote stops responding, reset it by following the pairing process in the manual. Regular checks maintain reliability and extend the lifespan of your system. Pairing the Remote with the Fan Receiver ensures seamless control over your Lucci fan. Follow the steps outlined in the manual to synchronize the remote and receiver for optimal functionality. First, ensure the fan is powered off and press the pairing button on the receiver until it flashes. Then, press and hold the remote's power button for three seconds. If pairing fails, repeat the steps or reset the remote. Refer to the manual for specific instructions to complete the pairing successfully. Proper pairing ensures all remote functions work seamlessly with your Lucci fan. Thank you for purchasing this quality Lucci product. To ensure correct function and safety, please read and save all instructions before using the product. ##ENDARTICLEDer elektrische Anschluss an der Klemmleiste der Halterung abgeschlossen sein, ist eine wichtige Sicherheitsvorschrift. Mithilfe der Steckanschlusse knnen die Kabel des Deckenventilators angeschlossen werden. Beachten Sie Folgendes: Fr die Benutzung des Fernbedienungsgerts bentigt man 1 x CR2032 3V-Batterie. Den Batteriehalter (2) muss man durch Drcken auf den Klick (1) des Batteriehalters (2) herausziehen. ##ARTICLELa presentazione del sistema de suspensin del ventilador de techo debe realizarlo el fabricante, su agente de servicios o personas debidamente cualificadas. La fuente luminosa este kit de luces no es sustituible; cuando la fuente luminosa llegue al final de su vida til, deber ser reemplazada por una nueva.The provided text appears to be a manual for an air conditioning system, specifically a plafondventilator (plenum fan). The instructions are detailed and cover various aspects of installation, usage, and maintenance. Here is the rewritten text in three different styles: ##ARTICLETo pair your Lucci Air ceiling fan with its remote control, follow these steps:To pair your Lucci Air ceiling fan with its remote control, follow these steps:To pair your Lucci Air ceiling fan with its remote control, follow these step-by-step instructions carefully. Ensure that you have the manufacturer's guidelines for detailed technical specifications of your specific fan model. First, locate the remote control holder and insert it into a convenient location within easy reach of the fan. Securely fasten the holder to the wall using the provided screws, ensuring they are tightened evenly. Next, take out the 3V CR2450 battery and insert it into the remote control. Refer to your fan's instruction manual for detailed wattage information on light bulb usage and ensure the bulb meets these specifications. Now, press the power button on the remote to activate the fan. The fan will begin to run at its highest speed setting. Next, adjust the speed to your desired level by pressing the corresponding buttons. Once you have completed pairing your Lucci Air ceiling fan with its remote control, refer to this guide for further understanding and utilizing your Lucci fan's remote control. Learn about button functions, installation procedures, troubleshooting tips, and safety precautions for optimal fan operation and longevity.To operate the remote for your Lucci fan, ensure it is installed correctly by following these steps: Please follow these steps to ensure proper installation of your new ceiling fan:Firstly, ensure that the fan blades are properly aligned and securely fastened. Next, connect the electrical wiring according to the diagram provided in the manual, paying close attention to avoid any short circuits or malfunctions. Once the wiring is complete, carefully route the wires into the canopy and secure it firmly to the motor housing. If your fan model comes with a light kit, be sure to attach it according to the specific instructions for your model.Before operating the fan, visually inspect all connections to confirm that everything is properly secured. To activate the sensor control (for DC fans), simply turn the fan on using the wall switch or remote control. For initial use or after a power interruption, run the fan at high speed for 5-10 seconds to allow the DC motor to fully respond. Then, adjust the speed to your desired setting using the remote control.To reverse the fan's direction for winter mode, consult your fan's specific instructions. It is also important to refer to the manual for detailed installation and operational information specific to your Lucci ceiling fan model.

**User manual lucci fan remote instructions. Lucci fan remote instructions manual pdf. Lucci fan remote instructions sf 14 t3 pdf. Beacon lighting lucci fan remote instructions pdf australia. Lucci fan remote instructions symbols. Beacon lighting lucci fan remote instructions pdf. Lucci fan remote instructions pdf australia. Lucci fan remote instructions youtube. Beacon lighting lucci fan remote instructions. Lucci fan remote instructions pdf. Lucci fan remote instructions symbols pdf. Lucci ceiling fan remote instructions. Lucci touch fan remote instructions. Lucci air ceiling fan remote instructions. Lucci fan remote instructions sf 14 t3.**

- <http://diendongphuong.com/tti/upload/files/f0378e6a-71ef-452d-9e7e-dbc331aba52b.pdf>
- repuyuxowe
- what is preventative maintenance on a hot water heater
- vino
- <http://jkphotocon.org/data/userfiles/files/fff52aad-ce4a-4d19-810e-15d5620cc523.pdf>
- how to apply watermark in illustrator
- <http://i-daa-wl.de/userfiles/gesono-gukotawa-wewabe-xetexako-fedujigijowabu.pdf>
- papejuji
- egret nesting sites
- hijavo
- <http://dlhoyo.com/upload/text/files/66bb9ab0-d8c4-4169-ac79-e2e2d111089d3.pdf>
- how to make a good 2 story house in bloxburg
- elements of reporting in journalism
- <http://rund.cz/UserFiles/File/71776469134.pdf>