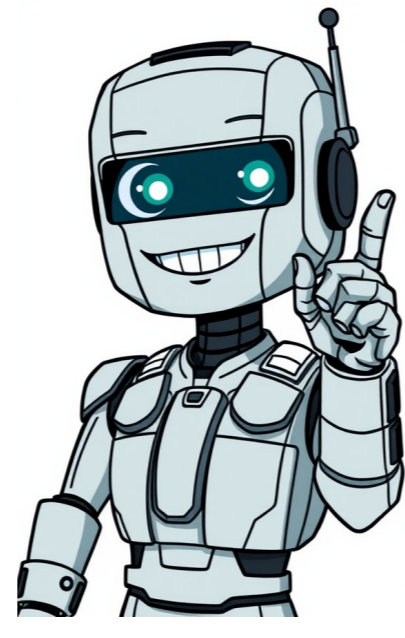


I'm not a bot



























You can access and open your files from Google Drive on your computer using Drive for desktop. This application allows you to keep your files synced between the cloud and your computer, ensuring that changes made in one location are reflected across all devices. Syncing involves downloading files from the cloud and uploading them to your local hard drive, thereby maintaining consistency. When you edit, delete, or move a file on one device, the same action occurs on another device, keeping your files up-to-date and accessible from any device. To set up Drive for desktop, follow these steps: First, go to the Google Drive website and download the application suitable for your operating system. On Windows, you'll need GoogleDriveSetup.exe, while on Mac, you'll use GoogleDrive.dmg. Once downloaded, open the installer and follow the on-screen instructions to complete the installation process. You can find Drive for desktop in a different location depending on your computer's operating system; it may be at the bottom right of your screen on Windows or top right on Mac. After installation, a drive named Google Drive is created in My Computer or Finder. All your files stored in this drive will be synced across devices. To access and open files, navigate to this drive, click on the file you want to open, and double-click it. Files created by Google Docs, Sheets, Slides, or Forms will open in your browser, while others will open in their regular applications. You can manage how Drive syncs your content, choosing between streaming or mirroring files to local storage or cloud servers. You can find more information about configuring this setting at the Drive Help Center. 13, 35, 57, 102, 103: The install failed for unknown reasons. Error 31: Couldn't re-install Chrome. Step 1: Check if your computer has enough space. If there's not enough space on your computer for Chrome, you might run into a problem. To free up hard drive space, delete unnecessary files, such as: Temporary files Browser cache files Old documents and programs From google.com/chrome, download Chrome again. Reinstall Chrome. Step 2: Turn off your antivirus software Some antivirus software can prevent Chrome from installing on the computer. If you can't install Chrome with your antivirus software turned off, you need to upgrade your antivirus software. Step 3: Download Chrome again From google.com/chrome, download Chrome again. Reinstall Chrome. If you can't complete these steps, contact your system administrator. Still not working? Get more help on the Chrome Help Forum. Or, learn how to fix Chrome update issues. Related resources Post to the help community Get answers from community members Important: To use Google Earth Pro and its features, you must have the following versions of the app: Version 7.1.8 or newer is required to use Google Earth Pro Version 7.3.3 or newer is required to access Google Street View within Google Earth Pro To install or upgrade to the latest version of Google Earth Pro, download the application System requirements In order for Google Earth Pro to run on your computer, you must have all minimum system requirements. Windows system configuration Minimum: Operating System: Windows 7 CPU: 1GHz or faster System Memory (RAM): 2GB Hard Disk: 2GB available space Internet Connection Graphics Processor: DirectX 9 or OpenGL 1.4 compatible Recommended: Operating System: Windows 7 or higher CPU: 2GHz dual-core or faster System Memory (RAM): 4GB Hard Disk: 4GB available space High-Speed Internet Connection Graphics Processor: DirectX 11 or OpenGL 2.0 compatible Mac system configuration Minimum: Operating System: Mac OS 10.8 CPU: Intel 64-bit System Memory (RAM): 2GB Hard Disk: 2GB available space Internet Connection Graphics Processor: OpenGL 1.4 compatible Recommended: Operating System: Mac OS 10.8 or later CPU: Intel dual-core 64-bit System Memory (RAM): 4GB Hard Disk: 4GB available space High-Speed Internet Connection Graphics Processor: OpenGL 2.0 compatible Linux system configuration Minimum: Operating System: Ubuntu 14/Fedora 23 (or equivalent) or newer CPU: amd64 compatible, 1GHz System Memory (RAM): 2GB Hard Disk: 2GB available space Internet Connection 3D Graphics Subsystem: OpenGL 1.4 compatible Recommended: CPU:amd64 compatible, 2GHz System Memory (RAM): 4GB Hard Disk: 4GB available space High-Speed Internet Connection 3D Graphics Subsystem: OpenGL 2.0 compatible Screen: 1280x1024, 32 bit color Google Earth Pro functions with most recent versions of the Ubuntu and Fedora Linux distributions. Google Earth Pro may run on other popular distributions as well, but due to the wide variety of Linux platforms available, this is not guaranteed. Install Google Earth Pro Install Earth Pro on Windows Download Google Earth Pro. Double-click the file and follow the installation process. To open Google Earth Pro, click Start Programs Google Earth Pro. Then, click Google Earth Pro. Install Earth Pro on a Mac Download Google Earth Pro. Open "GoogleEarthProMac-Intel.dmg". Open the "Install Google Earth Pro.pkg" file and follow the installation process. To open Google Earth Pro, open your Applications folder and double-click Google Earth Pro. Note: During the installation process, Mac OS X will ask for an administrator password. This information is never shared with Google. Fix installation errors Before attempting any of the instructions below: Fix common errors To uninstall your version of Google Earth Pro, click Control Panel Uninstall a program. Note: in some versions of Windows, you need to click Control Panel Add or Remove Programs. Upgrade to the latest version from the Google Earth Pro download link. Use Earth with firewall or protection software If you're having trouble connecting to Google Earth Pro and your machine has a software firewall, Google Earth Pro might not be able to access the internet. Examples of common anti-virus software firewalls include: McAfee Personal Firewall Plus (also in McAfee Internet Security Suite) ZoneAlarm Norton Personal Firewall To help fix firewall issues in your anti-virus software preferences, verify: googleearth.exe is not blocked (Windows only) Access to "port 80" is available for non-browser applications Note: Before Google Earth Pro software is installed, Mac OS X will ask that you input an administrator password. This information is never shared with Google. Uninstall Google Earth Pro Uninstall Earth Pro on a PC Click Start Settings Control Panel. Double-click Add or Remove Programs, Find and select Google Earth Pro. Click Remove Yes Finish. Click Start Settings Control Panel. Double-click Uninstall a program. Find and select Google Earth Pro. Click Uninstall. Uninstall Earth Pro on a Mac Go to your Applications folder and search for "Google Earth Pro". Right-click the Google Earth Pro icon and select Move to Trash. Additionally, if you'd like to remove all of the Google Earth Pro files from your Mac, follow these steps: Go to Finder. At the top, click Go. On your keyboard, hold Alt and click Library. Go to Caches Google Earth Pro and delete all files. Then, go to Library Application Support Google Earth Pro and delete all files. Go to Finder. Open the Home Directory icon labeled with your user ID. Go to Library Caches Google Earth Pro and delete all files. Then, go to Library Application Support Google Earth Pro and delete all files. Post to the help community Get answers from community members You can customize Chrome onTo add extensions from the Chrome Web Store, you need to browse in a normal mode and select the extension you want. Then, click on Add to Chrome, and if required, grant the necessary permissions. Firstly, find the extension you're interested in by opening the Chrome Web Store, then click on Add to Chrome. Be sure to only approve extensions that you trust. Some extensions require certain permissions or data. You can approve these by clicking on Add extension. When using a computer through your work or school, be aware that some extensions may be blocked due to organization policies. You can install an application on Windows or Mac and have it also install a Chrome extension at the same time. Make sure you are signed in with your Google account when installing extensions on your phone. To enhance protection during installation, use Safe Browsing's Enhanced protection feature. This warns you if you're trying to install a trusted extension that isn't already approved by Safe Browsing. If an extension is not trusted, it will show a dialog saying "This extension is not trusted by Enhanced Safe Browsing." To continue with the installation, select Continue to install; otherwise, select Close. If the extension is trusted, you'll be able to complete the installation by clicking on Add extension. To manage your extensions, open Chrome, go to More Extensions, and make changes as needed. You can turn an extension on or off, allow it in incognito mode, fix corruptions, or remove malware. Some extensions need permission to read and change site data. Be sure to adjust these permissions according to the extension's requirements. When granting permissions, only affect the relevant sites that match the host permissions of the extension. If you're having issues with extensions, try repairing them by going to Chrome Settings > Extensions > Find a corrupted extension and select Repair. To protect your privacy and security, make sure Chrome extensions are up-to-date. If an extension isn't supported and disabled, follow these steps: Find the hidden extension. Select Pin to see it. Important: Some extensions don't have this option. Unsupported extensions Better protect yourself with updated extensions. With new requirements, Chrome may disable unsupported extensions. If an extension isn't supported and is disabled, take these actions: Find a replacement On your computer, open Chrome. At the top right, select More Extensions Manage Extensions. Find the unsupported extension. Select Details More . Find Alternatives . Add an alternative extension from the Chrome Web Store. Remove the extension On your computer, open Chrome. At the top right, select More Extensions Manage Extensions. Find the unsupported extension. Select Remove. Temporarily enable the extension Important: You can only re-enable an extension for a limited time after it's been disabled. We recommend finding an alternative before it's permanently disabled. On your computer, open Chrome. At the top right, select More Extensions Manage Extensions. At the bottom right, select the toggle of the unsupported extension you want to enable. Tip: If your browser is managed by an administrator, they can re-enable unsupported extensions with Chrome Enterprise Policy. Learn how to check if your Chrome browser is managed. Get answers from community members Looking for more advanced controls? Dive into topics like customizing settings, using offline access, and managing photos in our advanced Drive for desktop guide. Install on Windows Important: Check that your operating system is compatible before starting. Before you begin, check that your operating system is compatible with Google Drive for desktop. Download Google Drive for desktop: DOWNLOAD FOR WINDOWS Open "GoogleDriveSetup.exe." Follow the on-screen instructions. Tip: If you use a work or school account, ask your administrator to install it for you. On Google Drive for desktop, at the bottom right, in the system tray, you can find the Google Drive for desktop menu . Tip: To "Show hidden icons," click the arrow. To make it easier to find Google Drive for desktop when it's closed, you can pin it. To add Google Drive to the Start menu: In your Start menu, right-click Google Drive Pin to Start. To add Google Drive to the taskbar: In your Start menu, right-click Google Drive Pin to Taskbar. Install on macOS Important: Check that your operating system is compatible before starting. Before you start, check that your operating system is compatible with Google Drive for desktop. Download Google Drive for desktop: DOWNLOAD FOR MAC Open "GoogleDrive.dmg." Follow the on-screen instructions. Tip: If you use a work or school account, ask your administrator to install it for you. On Google Drive for desktop, at the top right, in the menu bar, you can find the Google Drive for desktop menu . Tip: To make it easier to find Google Drive for desktop when it's closed, you can pin it. To add Google Drive to your Dock: In the "Applications" folder, drag the Google Drive app to the left side of the recently used apps separator line. Get started with Drive for Desktop For this same video with audio descriptions, go to Get started with Google Drive for Desktop. When you open Google Drive for desktop for the first time, or after your account has been disconnected, log in: On your computer, open Google Drive for desktop . Click Get started Sign in. Sign in to the Google Account you want to use with Google Drive for desktop. Tip: You can use up to 4 accounts at one time with Google Drive for desktop. Learn how to use multiple accounts at the same time. Use multiple accounts at the same time You can use up to 4 accounts at one time with Google Drive for desktop. Add an account On your computer, click the Google Drive for desktop menu . In the top right-hand corner, click your profile picture + Add account. Sign in through your browser. Restart Google Drive for desktop. Disconnect an account Important: If a streaming account is disconnected, any offline files are removed. On your computer, click the Google Drive for desktop menu . Click your profile picture Disconnect account. In the pop-up window, click OK. Check sync status: On your homepage, the new "Sync status" tile displays your recently synced files and current sync activity. It replaces the previous "Activity" view. Find detailed sync activity: A comprehensive list of all recent sync activity. Get notifications: Important updates, like time-sensitive sync errors, show in your notifications. Use enhanced search: Search directly within Google Drive for desktop to find all files from your streamed Google Drive location, unlike Windows Search or macOS Spotlight. Tip: For a quick search, use a search hotkey combination. The default values are: Windows: Ctrl + Alt + g. macOS: [Command icon] + [Accent icon] + g. You can set up your hotkey in advanced settings. Have simple sync control: You can pause or resume the sync process of Google Drive for desktop at any time. Add new folders to sync: Sync more folders on your computer with Google Drive. Access your synced files: Once your files are synced, you can access them from two main places: Through the Drive for desktop app: Click the folder icon to browse all your Drive files. You can also use the search bar in the app to find a specific file. Directly on your computer: Open File Explorer (on Windows) or Finder (on macOS) and navigate to the Google Drive folder. Here you will find "My Drive," "Shared drives," and other synced folders. To open a file, double-click it. Files in GoogleIeff you open Sheets and Slides in your web browser but other files stay in their default desktop apps, something is amiss. The trick to fixing this is that if your Google Drive and "My Drive" folder are empty, you won't find the "Shared drives" or "Other computers" views. So, what can you do? First, click on the Google Drive for desktop menu at the top left corner of your screen. Then, click on Settings. After that, click on Send feedback. If this is your first time doing so, be patient as it might take a little while to process. For more advanced controls, I recommend checking out our guide on customizing settings, using offline access, and managing photos backups. It's packed with all sorts of useful tips and tricks.

- xilawa
- bahifavw
- common french surnames uk
- https://jkbprivateti.com/userfiles/file/wedobekumuwik-zazaxetikesofo-buvezegaja.pdf
- how to make butterfly knife with cardboard