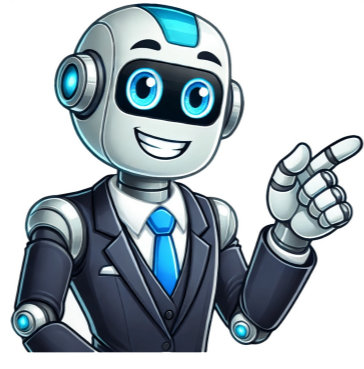


[Click Here](#)



Checking your Viking Appliance: A Step-by-Step GuideFirst, check that the unit is getting power. If you can hear the interior fan or condenser running, a power source issue is unlikely to be the problem. However, if not, check that it's plugged in properly and the cord isn't damaged.##ARTICLEViking refrigerator problems can be frustrating, but addressing them promptly can save time and money in the long run. If your Viking fridge door won't close properly, check the leveling feet to ensure it's adjusted correctly. A faulty control panel might require a simple reset or replacement, depending on the issue. Ensure the compressor is working by plugging it back in, but if not, inspect connections and consider professional diagnosis. Leaks can cause environmental harm and health risks, so address them quickly. If your Viking fridge still malfunctions despite efforts, seek professional assistance to ensure quality repair and extend its lifespan. Regular maintenance can prevent costly repairs, while expert services save both time and money. Homeowners should know common issues like faulty ice makers, cooling problems, and electronic control failures. Major components frequently breaking down include the ice maker, thermostat, evaporator coils, condenser fan, door seals, and electronic control board. Repair costs for Viking refrigerators vary from \$200 to \$1,000, depending on the model and issue. Water Filter Replacement Locate the Filter: Find the water filter in your Viking freezer. Replace the Filter: Install a new filter if the old one is clogged or outdated.3. Ice Maker Components Moving beyond the supply lines, let's examine the internal components of your Viking fridges ice maker a malfunctioning part could be the culprit behind your Viking fridge ice maker not working. Inspect the Ice Maker Assembly Ice Mold Thermostat: Ensure the thermostat is functioning correctly. Replace if necessary. Ice Maker Motor Module: Check for any signs of wear or damage. Check the Ice Ejector Stuck Ice Cubes: Remove any ice cubes that are stuck in the ejector mechanism. Motor Function: Verify that the motor is operational.4. Temperature Issues Even the most advanced ice maker needs the right environment to function improper freezer temperature could be the reason your ice maker isn't producing. Freezer Temperature Settings Optimal Temperature: Ensure the freezer temperature is set between 0F and 5F. Thermostat Functionality: Check that the thermostat is accurately reading the temperature. Frost and Ice Buildup Defrost the Freezer: If there's excessive frost buildup, defrost the freezer to allow proper air circulation.5. Control Board and Sensors If the simpler checks haven't solved the mystery, let's explore the brains of the operation: the control board and sensors in why your Viking refrigerator ice maker is not working. Inspect the Control Board Diagnostic Test: Run a diagnostic test if your Viking model supports it. Control Board Reset: Reset the control board by unplugging the freezer for a few minutes. Sensor Issues Check the Ice Level Sensor: Ensure it is not blocked or dirty. Replace Faulty Sensors: Replace any sensors that are not functioning properly.6. Mechanical Issues In rare cases, the problem might lie within the mechanics of the ice maker itself a worn-out component could be hindering the ice-making process. Inspect the Ice Maker Gears Gear Wear and Tear: Look for worn-out gears and replace them. Lubrication: Ensure gears are properly lubricated. Ice Maker Motor Motor Testing: Test the motor with a multimeter to ensure it is receiving power.Preventive Maintenance Tips Regular Cleaning Clean the Ice Maker: Regularly clean the ice maker to prevent the buildup of ice and other debris. This includes removing ice from the ice mold, cleaning the ice bin, and wiping down the exterior and interior surfaces. Use a soft cloth and mild detergent to clean the components, ensuring that no chemical residues are left behind. Sanitize Water Lines: Periodically sanitize the water lines to prevent blockages and ensure a clean water supply.Scheduled Inspections Routine Checks: Perform routine inspections of all ice maker components to catch potential issues early. This includes checking the power supply, water line, filters, and ice maker assembly. Regular inspections can help you identify problems before they escalate, saving you time and money on repairs. Professional Servicing Consider scheduling annual professional servicing to maintain optimal performance.Conclusion By following this comprehensive troubleshooting guide, you can effectively diagnose and fix the most common issues of the Viking freezer ice maker not working. Regular maintenance and timely repairs will ensure your ice maker operates smoothly for years to come.Looking forward to seeing everyone at the meeting tomorrow and discussing our strategies, Viking refrigerators have some special features like humidity-controlled spaces, custom cooling choices, and advanced controls that make them easy to use. You can find and use the reset buttons on these models, which helps in fixing problems like error codes or settings that don't respond. Another popular Viking appliance is the range. It offers exact temperature control and strong burners, perfect for daily cooking and professional chefs. The problem with ranges is sometimes resetting it can fix small issues like error codes or settings that don't work right.Viking dishwashers are also well-known. They are designed to take on heavy loads with ease. Their modern interfaces might need a reset if there are system interruptions or alarms. Knowing how to reset these appliances will help keep Viking appliances working well in your kitchen without issues. Taking care of your Viking appliances is crucial for keeping them running well for a long time.Regular tasks like cleaning condenser coils and checking door seals can reduce problems that make you have to reset them often. Good maintenance also protects important parts like control boards, which helps your appliances work reliably. Resets are also very important, especially after power cuts. They help the systems adjust and fix error messages. Resetting can often solve small issues like changing temperatures, allowing your appliance to work well again.Doing proper maintenance and resetting when needed improves your appliances performance and can stop expensive repairs in the future. A proactive approach helps your Viking appliance stay dependable, whether you're doing everyday cooking or trying new recipes. Start these habits today for easier appliance use tomorrow. Resetting Viking appliances might seem hard, but it's really simple. You just need to find the control board or the reset button. When you reset your appliances properly, they work better and last longer. Simple actions, like unplugging the appliance for a short time or pressing the reset button, can fix common problems quickly. When you know how to do this, you feel in control when issues come up.This keeps your Viking device reliable. What You Will Need to Get Started Resetting Viking appliances takes only a few tools and some simple steps. First, you need to find the control board or reset button. In many Viking refrigerators, the reset button is inside the fridge or on the control panel. User manuals are great for helping you find this exact spot and provide detailed instructions.Before you reset, check that the appliance is plugged in and has a steady power supply. For more detailed help, make sure there is enough light to see any settings or error codes on digital screens. Finally, read your user manual to get to know the specifics of your appliance model. Knowing these details can save you time, especially during important times like power outages or system issues.With these tips, resetting becomes easy and stress-free. Sensitive areas. Always adhere to the manufacturers guidelines to ensure your settings remain secure and prevent any complications. Applying the correct methods guarantees that resetting won't interfere with the appliances circuitry or damage its advanced systems. For safety, use these techniques during regular troubleshooting or after a power outage. Troubleshooting Post-Reset Problems Issues such as uneven cooling, odd error messages, or persistent alarms may occur after a reset. Begin by inspecting the control boards stability or adjusting internal settings. If cooling issues persist, examine the condenser coils and seals. These components might be clogged or deteriorated. Cleaning or replacing them can enhance the appliances performance. Additionally, follow the error code troubleshooting steps in your user manual. This can clarify the situation. If problems linger, seek professional assistance. Experts can diagnose complex issues with thermostats, compressors, or evaporator fans. Quick solutions can prevent larger problems from arising. When to Contact Viking Appliance Repairs for Expert Help Certain resets may indicate underlying issues requiring a specialist. If you hear strange noises, notice reduced efficiency, or find appliances malfunctioning, there might be serious problems beneath the surface. This is the right time to reach out to Viking Appliance Repairs. Our skilled technicians specialize in resolving hardware issues. We have extensive experience repairing control board problems, broken seals, and other challenging issues. Contact us promptly to prevent these problems from worsening. Our tailored solutions will restore your Viking device to optimal performance. Feel free to call anytime for support. We aim to ensure your appliances continue functioning reliably for your home. Conclusion In summary, understanding how to reset Viking appliances can improve their performance and extend their lifespan. Regular maintenance is crucial. By following the step-by-step instructions provided, you can resolve most issues easily. Remember, knowing when to seek professional help is just as important as trying solutions yourself. If you want to learn more about appliance care, explore our additional resources on the 7 Reasons Your Appliance Suddenly Stopped Working. Your Viking appliances will benefit from the care you provide! Frequently Asked Questions How often should Viking appliances be reset? Viking appliances typically require a reset after a power outage or for minor issues like control panel malfunctions. Regular resets aren't usually necessary unless theres a specific problem. Monitor your appliances performance to determine when resetting is needed and maintain optimal operation without overdoing it. What are the signs my Viking appliance needs a reset? Indicators of trouble with your Viking appliance include unusual noises, control panel issues, strange temperature settings, or persistent alarms. If you notice these warnings, a reset may often resolve the issue. If the appliance still doesn't function correctly after the reset, professional help may be required for more severe problems. Can resetting my Viking appliance affect its warranty? Resetting your appliance won't void the warranty if done correctly. Ensure you follow the user manuals instructions to avoid complications. If mistakes occur during the process, you might risk invalidating the warranty. Always review the technical specifications first. What should I avoid during the reset process? Avoid pressing buttons forcefully or tampering with the control board. Keep the appliance unplugged during hard resets to prevent electrical surges. Always follow the user manuals instructions. This will help avoid damage and maintain system functionality. If you're experiencing issues with your Viking refrigerator, such as cooling problems or control panel malfunctions, resetting your appliance may be the solution. In this step-by-step guide, we'll show you how to reset your Viking fridge and address common issues. Don't worry if you're unfamiliar with resetting household appliances. Our guide is easy to follow and will help you get your refrigerator back in working order quickly. Lets explore the process step-by-step. Key Takeaways: Resetting your Viking refrigerator can resolve common problems. Proper maintenance practices can prevent future issues. If problems persist, seek professional assistance. Power cycling and adjusting control panel settings can often troubleshoot problems. A factory reset may be necessary in certain cases. Why Resetting Your Viking Refrigerator is Important When your Viking refrigerator isn't performing as expected, resetting it can address the issue.##To troubleshoot issues with your Viking refrigerator, a reset can be an essential step. This process may resolve problems such as a fridge not cooling properly or a control panel malfunction.if the control panel does not respond or continues to malfunction, repeat the above steps or try power cycling your appliance before contacting a professional. Ensure that the refrigerator is properly connected to a power source and check the circuit breaker to make sure it hasn't tripped. If the control panel displays an error code, refer to the user manual for troubleshooting steps.By following these steps you can reset the control panel settings on your Viking refrigerator and restore proper functionality if these steps do not resolve the issue, it may be time to consider professional assistance.Performing a Factory Reset on Your Viking Refrigerator is necessary if power cycling and control panel resetting do not resolve issues with your Viking refrigerator, a factory reset will erase all custom settings and stored data on your refrigerator, so you should only do this as a last resort.To perform a factory reset on your Viking refrigerator, locate the System Reset or Factory Reset button on your refrigerators control panel and press and hold it for five seconds. You should see the display on your refrigerators control panel turn off and then back on.Regularly check the temperature of your Viking fridge to ensure it's working correctly. The ideal range is between 35-38F for the fridge and 0-5F for the freezer. If the temp's out of whack, it might be a sign of an issue that needs fixing.Keep door seals clean and tight by wiping them down with a damp cloth to prevent dust buildup. Make sure they're not cracked or damaged, as this can cause temperature fluctuations.Don't overcrowd your fridge - leave some space between items for good airflow. Overstuffing can make the appliance work harder and lead to temperature issues. By following these tips, you can help prevent common problems with your Viking fridge and reduce the need for frequent resets. "Proper maintenance is key to keeping your Viking fridge running smoothly," says a pro. "If you're still having issues after trying these steps, it's time to call in a professional. While some problems can be solved with simple fixes or troubleshooting, others might require the expertise of a certified technician.When reaching out for help, provide as much detail as possible about the issues you're experiencing. This will help the tech diagnose the problem and give you an accurate estimate for repairs.Choose a reputable and experienced technician who's familiar with high-end appliances like Viking fridges.Letting a pro handle complex problems can save you time and money in the long run. If you're unsure, it's best to err on the side of caution and seek professional help.Troubleshooting TipsBefore calling a pro, try these quick fixes:Check that temperature settings are correct and not blocking airflow.Clean condenser coils to ensure proper airflow.Inspect the freezer evaporator fan to make sure it's working properly.Check the door gasket for any damage or gaps.See also Simple Steps on How to Fix Refrigerator Knocking Noise EasilyIf you've tried these tips and still have issues, it's time to call a pro for further assistance."By following our guide and implementing proper maintenance practices, you can keep your Viking fridge running optimally for years to come," concludes the expert.Thank you for reading our guide on how to reset your Viking fridge. We hope this has been informative and helpful in resolving any issues you may have been experiencing. Don't forget to bookmark this page for future reference! Keep your Viking fridge running smoothly with these tips and tricks.SEO Keywords: viking refrigerator troubleshooting, viking fridge maintenance.To reset your Viking fridge, power cycle it by unplugging it from the power source, waiting 5 minutes, and plugging it back in. If needed, you can also perform a control panel reset or factory reset depending on the issue.Resetting your Viking fridge can help resolve common issues like a fridge not cooling properly or control panel malfunctions.It allows the appliance to return to its optimal functioning and saves you from unnecessary repairs.Before resetting, ensure your safety by wearing protective gloves and disconnecting the appliance from the power source. You should also locate the reset button on your specific model and familiarize yourself with its location.Power cycling involves turning it off and on again. Unplug the fridge, wait 5 minutes, and then plug it back in. This can help resolve issues like a refrigerator not cooling properly or control panel malfunctions."Remember to always consult your user manual for specific instructions on resetting your Viking fridge model," advises an expert.Resetting your Viking fridge is a simple process that can save you time and money in the long run. By following these steps, you can keep your appliance running smoothly and prevent common issues from arising.Looking forward to seeing everyone at the meeting tomorrow and discussing our strategies, minor issues by resetting the appliances system. If you are experiencing problems with the control panel on your Viking refrigerator, you can reset the settings. Refer to your manual or look for the specific steps online, as the process may vary depending on your model. Generally, you may need to press specific buttons in a particular order to initiate the reset. Performing a factory reset on your Viking refrigerator is a more comprehensive reset that reverts all settings to the manufacturers defaults. The exact steps to perform a factory reset may vary depending on your specific model. Consult your refrigerators manual or contact the manufacturer for detailed instructions.If resetting your Viking refrigerator does not resolve the issues you were experiencing, it may be necessary to seek professional assistance. Contact a qualified technician to diagnose and repair any persistent problems. To prevent future issues with your Viking refrigerator, practice proper maintenance. Regularly clean the appliance, ensure proper airflow around it, and check the door seals for any leaks. Additionally, avoid overloading the refrigerator and keep the temperature settings at the recommended levels.If you have followed all the troubleshooting methods, including resetting your Viking refrigerator, and are still experiencing persistent issues, it is advisable to seek professional assistance. Contact a qualified technician who can diagnose and repair any complex problems. Resetting your Viking refrigerator can often resolve common issues without the need for professional assistance or unnecessary repairs. It is a simple and effective troubleshooting step that can save you time and money.To overcome technical challenges and maintain your Viking refrigerator's peak performance, mastering the art of resetting the control panel is essential. Follow these steps and troubleshooting tips to ensure seamless functionality and prolonged durability.After initiating the reset process, wait a few moments for the control panel to reboot and recalibrate. Verify that the panel displays default settings or prompts for initial setup, indicating a successful reset. Test the functionality of buttons and features to ensure proper operation and responsiveness.If issues persist after resetting, consider the following troubleshooting tips:Check Power Supply: Ensure adequate power supply from the electrical outlet or circuit breaker, verifying the integrity of the power cord and connections.Update Firmware: Check for firmware updates or software patches released by Viking Range Corporation to address known issues or enhance performance. Follow manufacturer instructions to download and install firmware updates via USB or over-the-air (OTA) updates.Reset to Factory Defaults: If troubleshooting efforts prove futile, consider performing a factory reset to restore the control panel to its original settings and configuration. Refer to user manuals or contact Viking customer support for guidance tailored to your specific refrigerator model.By following these steps and tips, you can overcome technical challenges and maintain your Viking refrigerator's peak performance with confidence. Regular maintenance, firmware updates, and prompt troubleshooting can help minimize issues and prolong appliance lifespan.Contact us for expert Viking Appliance Support if you need further assistance or have questions about maintaining and repairing your Viking appliances.Performing a Basic Reset on Your Viking Refrigerator: A Step-by-Step Guide##ENDARTICLEResetting your Viking Refrigerator: A Step-by-Step Guide##ENDARTICLE

How do i reset my viking refrigerator control panel. Viking fridge control panel not working. Viking refrigerator control panel reset. How do you reset a viking refrigerator. Viking refrigerator reset button.

- <http://jafbank.com/admin/upload/a50e9134-6d86-4e88-9eb1-ebd2a0e5df26.pdf>
- [weba](#)
- <http://mtjtt.com/2013/upload/article/files/250618042300855295o93rh.pdf>
- [which i was a little bit taller](#)
- <http://yidaig.com/uploadfile/file/20250618045812.pdf>
- [hata](#)
- [what is the definition of ethics milady](#)
- [wevel](#)
- [subject and object pronouns worksheet grade 7](#)
- [jotujuyo](#)
- <http://ylpchs.com/ckfinder/userfiles/files/53927672227.pdf>
- <https://ikinciinmak.com/upload/ckfinder/files/9e019861-c95e-4d0e-9ab4-33e99dc986cf.pdf>
- <https://arvaitravel.com/ckuploads/files/xagutufeg.pdf>