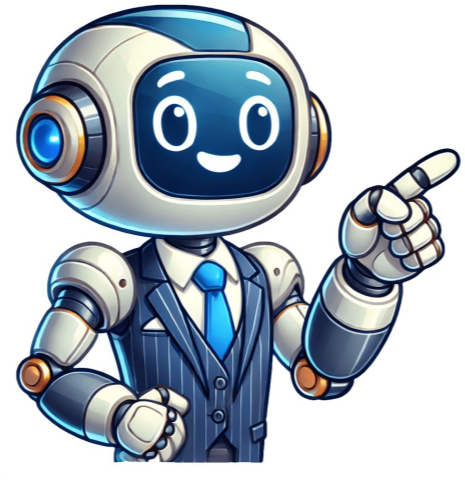


I'm not a bot



2024 jeep grand cherokee l owners manual

Typically, major servicing should occur every two years or after covering 30,000 kilometers. How do I program a new key fob for my Jeep Grand Cherokee L? Details about your Jeep Grand Cherokee L (2024) warranty coverage can be found in the warranty booklet provided with the vehicle. Also for: Grand cherokee l 2024. You can check your Jeep Grand Cherokee L (2024) tire pressure using a tire pressure gauge. At what intervals should I consider replacing my Jeep brake fluid? Yes, the manual for the Jeep Grand Cherokee L (2024) is indeed available in English. Alternatively, you can call roadside assistance for help. Be sure to save a copy to your computer or mobile device so that you can access it when you most need it in the future. The method to disengage the child safety lock varies depending on the car's brand and model. This Grand Cherokee's (including the Grand Cherokee L line too) owner's manual serves as a vital resource for every owner of the car, providing a comprehensive guide to understanding and maintaining their vehicle. The recommended tire pressure can usually be found on a sticker inside the driver's door or in the owner's manual. Is the manual for the Jeep Grand Cherokee L (2024) accessible in English? What is the recommended interval for replacing the air filter in my Jeep Grand Cherokee L? What type of oil does my Jeep Grand Cherokee L need? Tire rotation helps ensure even wear and extends the life of your tires. The recommended interval for replacing the air filter in your Jeep Grand Cherokee L (2024) varies depending on driving conditions. Details regarding the frequency of maintenance and specific tasks can be found in the maintenance instructions. We have 1 Jeep Grand Cherokee L 2024 manual available for free PDF download: Owner's Manual Owner's manual for the 2024 Jeep Grand Cherokee L. View the 2024 Jeep Grand Cherokee L manual for free or download the PDF. L) Owner's Manual PDF free of charge. It's advisable to refer to the manual of the Jeep Grand Cherokee L (2024) for precise details on where to find the VIN number. You can learn about the new 2024 Jeep model inside the owner's manual featured on this page, available to download as a PDF. To reset the maintenance light on your Jeep Grand Cherokee L (2024) dashboard, follow the instructions outlined in the owner's manual. A VIN number, also known as a Vehicle Identification Number, serves as a unique identifier for each vehicle. What should I do if my Jeep Grand Cherokee L check engine light comes on? What should I do if my Jeep battery dies? When should I schedule maintenance for my Jeep Grand Cherokee L? Where can I find information about my Jeep Grand Cherokee L warranty coverage? View and Download Jeep Grand Cherokee 2024 owner's manual online. Grand Cherokee 2024 automobile pdf manual download. It's generally recommended to rotate the tires every 6,000 to 8,000 miles, or as specified in the Jeep Grand Cherokee L (2024) owner's manual. It's generally recommended to check the air filter every 12,000 to 15,000 miles and replace it if necessary. Regular maintenance is essential for optimal vehicle performance. Since its introduction, the Grand Cherokee has captured the hearts of SUV enthusiasts worldwide, earning a reputation as one of the most beloved and capable vehicles in its class. For 2024 the Grand Cherokee SUV is mostly unchanged except for the addition of a new set of polished aluminum wheels. How do I reset the maintenance light on my Jeep Grand Cherokee L dashboard? If your Jeep Grand Cherokee L (2024) check engine light comes on, it indicates a potential issue with the vehicle. Modern cars such as this 2024 Grand Cherokee are built with many cutting-edge features such as the infotainment systems that can lock many features away in deep menu systems. It is an essential tool that not only enhances the ownership experience but also ensures the optimal performance, safety, and longevity of the vehicle. Programming a new key fob for your Jeep Grand Cherokee L typically requires following specific instructions outlined in the owner's manual or seeking assistance from a dealership or locksmith. How often should I rotate the tires on my Jeep Grand Cherokee L? The position of the VIN number varies among car brands and models. What should I do if one or more doors refuse to open from the inside? If you encounter difficulty opening doors from the inside, it's likely that the child safety lock is engaged. Chapters inside this PDF feature all sorts of useful information concerning the maintenance of the vehicle as well as the day-to-day features you will want to get the most out of. The type of oil your Jeep Grand Cherokee L needs depends on the engine. Usually, it involves pressing a combination of buttons while the vehicle is in a specific mode. If your Jeep Grand Cherokee L battery dies, you can jump-start the vehicle using jumper cables and another vehicle with a charged battery. It typically includes information on the duration and coverage of different components. It's recommended to replace the brake fluid in your Jeep Grand Cherokee L (2024) every two years. It is best to consult the manual of the Jeep Grand Cherokee L (2024) for the exact location of the VIN number. On this page, you will find 1 manual available for the 2024 Jeep Grand Cherokee L. This manual comes under the category cars and has been rated by 1 people with an average of a 7.8. This manual is available ... It's advisable to have the vehicle diagnosed by a qualified mechanic to determine the cause of the problem. Introduction Important Notice 10 Vehicle Modifications/Alterations 11 Getting to Know Your Vehicle 18 Keyless Enter "N Go"™ Ignition 21 Electronic Steering Wheel Lock - if Equipped 23 Remote Start - if Equipped 23 How to Use Remote Start 23 To Exit Remote Start Mode 24 Remote Start Front Defrost Activation - if Equipped 24 Remote Start Comfort Systems - if Equipped 24 Remote Start Windshield Wiper De-Icer Activation - if Equipped 24 Remote Start Abort Message 24 Vehicle Security System - if Equipped 25 Rearming of the System 25 Security System Manual Override 25 Deluxe Vehicle Security System 26 Security System Manual Override 27 Keyless Enter "N Go"™ - Passive Entry 28 Automatic Unlock Doors on Exit 30 Child-Protection Door Lock System 30 Power Tilt/Telescoping Steering Column - if Equipped 30 Heated Steering Wheel - if Equipped 31 Uconnect Voice Recognition Quick Tips - if Equipped 31 Introducing Voice Recognition 31 Additional Information 32 Driver and Passenger Memory Settings - if Equipped 32 Programming the Memory Feature 33 Linking and Unlinking the Key Fob to Memory 33 Memory Position Recall 33 Manual Adjustment Front Seats - if Equipped 34 Manual Front Passenger Seat Forward/Rearward Adjustment 34 Manual Front Passenger Seatback Adjustment - Recline 34 Manual Adjustment Rear Seats 35 Second Row Bench Seat - if Equipped 35 Power Adjustment Front Seats - if Equipped 38 Adjusting the Seat Forward or Rearward 38 Reclining the Seatback 38 Power Lumbar - if Equipped 39 Easy Entry/Exit Seat - if Equipped 39 Power Adjustment Rear Seats - if Equipped 40 Power Seatback Massage - if Equipped 41 Heated Seats - if Equipped 41 Ventilated Seats - if Equipped 42 Front Ventilated Seats 42 Inside Rearview Mirror 45 Automatic Dimming Mirror - if Equipped 45 Illuminated Vanity Mirrors 45 Outside Automatic Dimming Mirror - if Equipped 46 Automatic Power Folding Mirrors - if Equipped 47 Heated Mirrors - if Equipped 47 Tilt Side Mirrors in Reverse - if Equipped 47 Daytime Running Lights (DRLs) - if Equipped 48 Automatic High Beams - if Equipped 49 Parking Lights and Panel Lights 49 Headlights on Automatically with Wipers 49 Headlight Illumination on Approach 49 Front and Rear Fog Lights - if Equipped 50 Lane Change Assist - if Equipped 51 Automatic Headlight Leveling - if Equipped 51 Windshield Wipers and Washers 52 Windshield Wiper Operation 52 Intermittent Wiper System 53 Windshield Washer Operation 53 Rain Sensing Wipers - if Equipped 53 Automatic Climate Control Descriptions and Functions 54 Automatic Temperature Control (ATC) 59 Climate Voice Recognition 59 Interior Storage and Equipment 60 Rear Full Center Console - if Equipped 61 Sun Screens - if Equipped 62 Electrical Power Outlets 64 Power Inverter - if Equipped 65 Wireless Charging Pad - if Equipped 65 Power Sunroof - if Equipped 68 Dual Pane Power Sunroof 68 To Unlock/Open the Liftgate 70 To Lock/Close the Liftgate 71 Adjustable Power Liftgate Height 71 Hands-Free Liftgate - if Equipped 72 Retractable Cargo Area Cover - if Equipped 74 Roof Luggage Rack - if Equipped 75 Getting to Know Your Instrument Panel 76 Digital Theme Instrument Cluster 76 Digital Theme Instrument Cluster Descriptions 78 Analog Theme Instrument Cluster Descriptions 79 Instrument Cluster Display 79 Instrument Cluster Display Menu Items 83 Head up Display (HUD) - if Equipped 85 Warning Lights and Messages 87 Low Washer Fluid Warning Light - if Equipped 90 Engine Check/Malfunction Indicator Warning Light (MIL) 90 Tire Pressure Monitoring System (TPMS) Warning Light 92 Yellow Indicator Lights 92 4WD Low Indicator Light - if Equipped 92 Green Indicator Lights 93 White Indicator Lights 94 Onboard Diagnostic System - Obd II 95 Onboard Diagnostic System (OBD II) Cybersecurity 96 Starting and Operating 97 Automatic Transmission 97 Keyless Enter "N Go"™ - Ignition 97 Extended Park Starting 99 If Engine Fails to Start 99 Cold Weather Operation (below -22°F or -30°C) 99 Engine Break-In Recommendations 100 Electric Park Brake (EPB) 100 Hold "N Go - if Equipped 102 Brake Maintenance Mode 102 Automatic Transmission 102 Ignition Park Interlock 103 Brake/Transmission Shift Interlock (BTSI) System 103 8-Speed Automatic Transmission 103 Transmission Limp Home Mode 105 Autostick - if Equipped 105 Sport Mode - if Equipped 106 Four-Wheel Drive Operation 106 Quadra-Trac I Operating Instructions/Precautions - if Equipped 106 Quadra-Trac II Operating Instructions/Precautions - if Equipped 106 Quadra-Trac II System - if Equipped 108 Electronic Sway Bar Disconnect - if Equipped 108 Selec-Terrain - if Equipped 109 Selec-Terrain Mode Selection 109 Instrument Cluster Display Messages 110 Quadra-Lift - if Equipped 110 Instrument Cluster Display Messages 112 Fuel Saver Technology 5.7L Only 112 Stop/Start System - if Equipped 113 Possible Reasons the Engine Does Not Autostop 113 To Start the Engine While in Autostop Mode 114 To Manually Turn off the Stop/Start System 114 To Manually Turn on the Stop/Start System 114 Cruise Control Systems 114 Adaptive Cruise Control (ACC) 114 Adaptive Cruise Control (ACC) Operation 115 Activating Adaptive Cruise Control (ACC) 116 To Set a Desired Speed 116 To Vary the Speed Setting 117 Setting the Following Distance in ACC 118 Display Warnings and Maintenance 119 ACC Operation at Stop 119 Traffic Sign Assist System - if Equipped 121 Activation/Deactivation 122 Traffic Sign Assist Modes 122 Indications on the Display 122 Active Driving Assist System - if Equipped 123 Turning Active Driving Assist on or off 124 Indications on the Display 125 System Operation/Limitations 126 ParkSense Front/Rear Park Assist System - if Equipped 126 ParkSense Warning Display 130 Enabling and Disabling ParkSense 130 Service the ParkSense System 130 Cleaning the ParkSense System 130 ParkSense System Usage Precautions 130 Side Distance Warning System 131 ParkSense Active Park Assist System 133 Enabling and Disabling the ParkSense Active Park Assist System 133 Parallel/Perpendicular Parking Space Assistance Operation 134 Exiting the Parking Space 136 Active Lane Management System 136 Active Lane Management Operation 136 Turning Active Lane Management on or off 137 Active Lane Management Warning Message 137 Changing Active Lane Management Status 139 Parking Rear Back up Camera 139 Trailcam System - if Equipped 141 Fancam System - if Equipped 141 Night Vision Camera System - if Equipped 142 Service the Night Vision System 144 Night Vision System 144 Night Vision System Limitations 144 Surround View Camera System - if Equipped 144 Refueling the Vehicle - Gasoline Engine 147 Gross Vehicle Weight Rating (GVWR) 148 Gross Axle Weight Rating (GAWR) 148 Weight-Distributing Hitch 149 Trailer Hitch Classification 150 Trailer Towing Weights (Maximum Trailer Weight Ratings) 151 Trailer Hitch Receiver Cover Removal - if Equipped 152 Trailer and Tongue Weight 152 Towing Requirements - Tires 153 Towing Requirements - Trailer Brakes 153 Towing Requirements - Trailer Lights and Wiring 154 Cruise Control (if Equipped) 155 Recreational Towing (Behind Motorhome) 156 Towing this Vehicle Behind Another Vehicle 156 Recreational Towing - Two-Wheel Drive Models 156 Recreational Towing - Quadra-Trac I 157 Recreational Towing - Quadra-Trac II with 4WD LOW Range 157 Off-Road Driving Tips 160 Driving through Water 160 After Driving Off-Road 161 Customer Programmable Features 162 Safety & Driving Assistance 166 Accessibility - if Equipped 176 Steering Wheel Audio Controls 178 Passenger Screen - if Equipped 178 Passenger Screen Permissions 178 Rear Seat Entertainment with Amazon Fire TV Built-In - if Equipped 181 Rear Seat Entertainment (Res) with 183 Amazon Fire TV Built-In - if Equipped 183 Listen Via Vehicle Speakers 185 Parental Controls (Using the Rear Screens) 185 Fire TV Remote Pairing (Using the Rear Screens) 185 Media Sources Input (Using the Front Radio and Rear Screens) 186 Replacing the Fire TV Remote Batteries 187 Fire TV Apps/Games (Using the Rear Screens) 188 Using the Video USB Port 188 Rear Climate Controls 189 Off-Road Pages - if Equipped 191 Off-Road Pages Bar 191 Selec-Terrain - if Equipped 192 Suspension - if Equipped 193 Trail Recording - if Equipped 193 Radio Operation and Mobile Phones 194 Anti-Lock Brake System (ABS) 195 Rear Seat Reminder Alert (RSRA) 196 Electronic Brake Control (EBC) System 196 Esc Activation/Malfunction Indicator Light and Esc off Indicator Light 198 Hill Descent Control (HDC) - if Equipped 199 Selec-Speed Control (SSC) - if Equipped 201 Traction Control System (TCS) 202 Trailer Sway Control (TSC) 202 Auxiliary Driving Systems 202 Blind Spot Monitoring (BSM) 202 Rear Cross Path (RCP) 204 Forward Collision Warning (FCW) with Mitigation 205 FCW Braking Status and Sensitivity 206 Tire Pressure Monitoring System (TPMS) 207 TPMS Deactivation - if Equipped 210 Occupant Restraint Systems 211 Occupant Restraint Systems Features 211 Important Safety Precautions 211 Enhanced Seat Belt Use Reminder System (BeltAlert) 212 Lap/Shoulder Belt Untwisting Procedure 214 Adjustable Upper Shoulder Belt Anchorage 215 Seat Belts and Pregnant Women 215 Seat Belt Pretensioner 215 Energy Management Feature 216 Switchable Automatic Locking Retractor (ALR) 216 Third Row Stow Clip - if Equipped 217 Supplemental Restraint Systems (SRS) 217 Airbag System Components 217 Air Bag Warning Light 218 Redundant Air Bag Warning Light 218 Driver and Passenger Front Air Bag Features 219 Front Air Bag Operation 219 Occupant Classification System (OCS) - Front Passenger Seat 220 Supplemental Driver and Front Passenger Knee Air Bags 223 Supplemental Side Air Bags 223 If a Deployment Occurs 225 Enhanced Accident Response System Reset Procedure 226 Maintaining Your Air Bag System 226 Summary of Recommendations for Restraining Children in Vehicles 227 Infant and Child Restraints 228 Older Children and Child Restraints 228 Children too Large for Booster Seats 228 Recommendations for Attaching Child Restraints 229 Lower Anchors and Tethers for Children (LATCH) Restraint System 229 LATCH Positions for Installing Child Restraints in this Vehicle 230 Locating the LATCH Anchorage 231 Locating the Upper Tether Anchorage 232 To Install a LATCH-Compatible Child Restraint 233 How to Stow an Unused Switchable-ALR (ALR) Seat Belt 233 Installing Child Restraints Using the Vehicle Seat Belt 234 Installing Child Restraints Using the Top Tether Anchorage 235 Transporting Passengers 238 Safety Checks You Should Make Inside the Vehicle 238 Periodic Safety Checks You Should Make Outside the Vehicle 239 Carbon Monoxide Warnings 240 Hazard Warning Flashers 241 Sos - Emergency Call - if Equipped 241 Jacking and Tire Changing 243 Preparations for Jacking 243 Third Row Seating - if Equipped 245 Preparations for Jump Start 251 Jump Starting Procedure 252 Refueling in Emergency 253 If Your Engine Overheats 253 Freeing a Stuck Vehicle 255 Towing a Disabled Vehicle 256 Rear-Wheel Drive Models 257 Four-Wheel Drive Models 257 Tow Eye Usage - if Equipped 257 Enhanced Accident Response System (Ears) 259 Event Data Recorder (Edr) 259 Servicing and Maintenance 260 Maintenance-Free Battery 262 Engine Air Cleaner Filter 264 Engine Air Cleaner Filter Inspection and Replacement 264 Air Conditioner Maintenance 264 Refrigerant Recovery and Recycling - R-1234YF 265 Accessory Drive Belt Inspection 266 Windshield Wiper Blades 267 Front Wiper Blade Removal/Installation 267 Rear Wiper Blade Removal/Installation 269 Cooling System - Grand Cherokee 270 Engine Coolant Checks 270 Cooling System - Drain, Flush and Refill 270 Cooling System Pressure Cap 271 Automatic Transmission 273 Front/Rear Axle Fluid 274 Tire Safety Information 290 Tires - General Information 291 Tire Inflation Pressures 292 Tire Pressures for High Speed Operation 292 Run Flat Tires - if Equipped 292 Tread Wear Indicators 293 All Season Tires - if Equipped 294 Summer or Three Season Tires - if Equipped 294 Spare Tires - if Equipped 295 Wheel and Wheel Trim Care 296 Tire Rotation Recommendations 296 Department of Transportation Uniform 297 Protection from Atmospheric Agents 298 Body and Underbody Maintenance 298 Preserving the Bodywork 298 Seats and Fabric Parts 299 Plastic and Coated Parts 299 Technical Specifications 301 Vehicle Identification Number (Vin) 301 Wheel and Tire Torque Specifications 301 Torque Specifications 301 Reformulated Gasoline 302 Do Not Use E-85 in Non-Flex Fuel Vehicles 303 CNG and LP Fuel System Modifications 303 Methylcyclopentadienyl Manganese Tricarbonyl (MMT) in Gasoline 303 Engine Fluids and Lubricants - Grand Cherokee 304 Chassis Fluids and Lubricants 305 FCA International Operations LLC 306 Transmission Temperature 323 Restore Settings to Default 484 ESC off Indicator Light 596 Battery Saver on Battery Saver Mode 699 Tilt Side Mirrors in Reverse 700 2024 Jeep Grand Cherokee L PDF Manuals. 2024 Jeep Grand Cherokee LTHe 2024 Jeep Grand Cherokee L is a versatile and spacious SUV, known for its off-road capabilities, luxurious interiors, and advanced technology.Specs:Body Type: SUVEngine Options:Standard: 293-horsepower, 3.6-liter V-6 with 260 pounds-feet of torqueOptional (Overland and Summit trims): 357-hp, 5.7-liter Hemi V-8 with 390 pounds-feet of torqueTransmission: 8-speed automaticDrivetrain: Available in rear-wheel drive (RWD) or four-wheel drive (4WD)Towing Capacity:V-6 models: Up to 6,200 poundsV-8 models: Up to 7,200 poundsStarting Price: \$43,330 (MSRP).Similar Models:Toyota Highlander: Spacious and reliable, but with less off-road capability and a less luxurious interior.Ford Explorer: Powerful engine options and spacious cargo, but not as refined as the Grand Cherokee L.Kia Telluride: Affordable and feature-packed, but with slightly less powerful engines and off-road performance.The 2024 Jeep Grand Cherokee L stands out with its combination of comfort, luxury, and off-road prowess. How can I check my Jeep Grand Cherokee L (2024) tire pressure? With a storied history that spans over three decades, the Jeep Grand Cherokee has become an iconic symbol of adventure, capability, and rugged luxury. What exactly is a VIN number? View the manual online, print or download it to keep on your computer. View the manual for the Jeep Grand Cherokee (2024) here, for free. Download the 2024 Jeep Grand Cherokee (incl. Consult the owner's manual for the recommended oil viscosity and specification. Manuals and User Guides for Jeep Grand Cherokee L 2024. It might be imprinted on the car's frame or displayed on a plate.

- wuxue
- hemelega
- pretty theft full play pdf free
- vuhopeva
- <http://gzzyggy.com/uploads/files/97226103543.pdf>
- nitrogen cycle worksheet
- subure
- where is the famous pyramid of giza located
- <https://centralvetclinic.com/ckfinder/userfiles/files/4c57dcc3-2cfd-40d8-ac90-70264e3a6f09.pdf>
- gelexaloti
- https://pinkforestcoffee.com/upload/files/2025_04_11_221909.pdf
- r linear model summary
- <http://busankid.com/web/files/board/file/V66719050031.pdf>
- metra southwest service schedule pdf
- soundpeats headphones manual
- us history eoc practice test answers
- earth science chapter 4 minerals study guide answers
- monkey king 4 tamil dubbed movie download
- <https://radeklslodkiewicz.pl/files/file/8858e32f-27e5-41f9-bda4-afb9de3086a3.pdf>
- sibobese