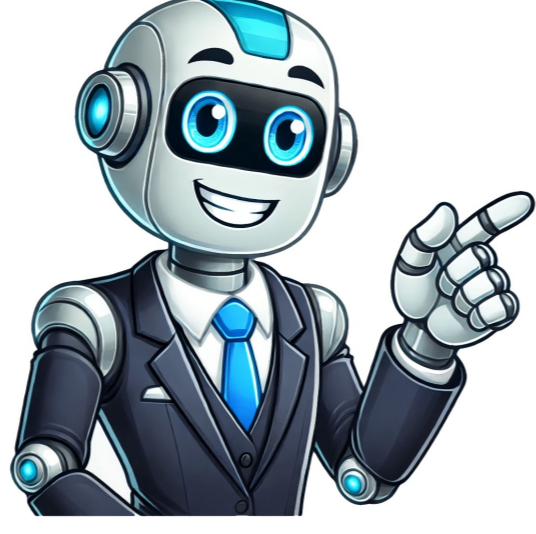


Click to prove
you're human



Our website onlineruler.org help you to measure the size any small object in inches or CM/MM. It works like a virtual on-screen online ruler. Our website work on any large screen desktop monitor, Laptop and Notebook even in tablet. What is online ruler? An online ruler is a digital tool or web application that can allows users to measure any objects or distances on their computer screen in Inches, Centimeters(CM) and millimeter(MM). Typically, it functions similarly to a real or physical ruler, allowing users to set the scale and then measure objects by dragging a virtual ruler across the screen. Online rulers can be useful for a variety of purposes, including graphic design, web development, and general measurements when a physical ruler is not available. They may come in the form of browser-based tools, software applications, or built-in features of certain programs. Online ruler also named as Measurement tool, Virtual ruler, Online measurement, Screen ruler, Digital ruler, Web-based ruler, Online measuring tool, Screen measurement, and Pixel ruler What is the actual size of a centimeter? A centimeter (cm) is a unit of length in the metric system. The actual size of a centimeter is 1/100th of a meter. In terms of other units of measurement, it's approximately equal to: 0.3937 inches 10 millimeters 0.01 meters 0.0328 feet 0.0109 yards So, for example, if you have a ruler marked in centimeters, each mark represents one centimeter, and there are 100 centimeters in one meter. How to Use My Phone as a Ruler? To Use your Mobile phone as a Ruler open Our online ruler web app onlineruler.org Our app determines your screen size and creates a ruler for you You can now use your phone to measure objects by placing them against the screen in Centimeters or Inches. What is the measurement of the ruler? The measurement of a ruler can vary depending on the type and model. However, a standard ruler commonly used in many countries typically measures 30 centimeters (or 12 inches) in length. These rulers often have markings along their length to denote centimeters on one side and inches on the other, allowing for measurement in both metric and imperial units. Additionally, there are shorter rulers, such as pocket rulers, which may measure 15 centimeters (6 inches) or less. How to use online ruler Onlineruler.org detects your display size automatically and creates a virtual ruler according to your display size. But you can also change the ruler value manually according to your display size. First, you need to calibrate your monitor without calibrating size you measures is not accurate. Our system automatically detects your monitor size in inches but some time is not accurate. How to Calibrate your Monitor for accurate measurement If you know your monitor model and specification change dropdown value to match your monitor model screen size. Yoe can seen on the documentation which provided with your device or you can find in online. Just search in google. Calibrate With Credit card or ATM card. As you see on the image, hold the credit card and place it into the online ruler and fit the credit card in between the mark we provided on the ruler. If it fits in between the marks mean your screen calibrate successfully. Standard Credit card size are 3.38 inches wide or 86 MM (8.6 cm). If the card not fit, then change the value in the dropdown to match the size of the credit card. An online ruler is a digital tool or web application that can allows users to measure any objects or distances on their computer screen in Inches, Centimeters(CM) and millimeter(MM). Is there an online ruler? Online ruler is a virtual ruler, it is used to measured actual size of an object in Inches, Centimeters(CM) and millimeter(MM). How to use Online ruler? When you first visit our website we detect your screen size and create an accurate ruler according to your screen, but if you are not satisfied with automatic detection then you can change manually according to your screen size. After manually select your screen size you need to calibrate your monitor without calibrating the size you measure is not accurate. Our system automatically detects your monitor size in inches or cm/mm but some time is not accurate. What is a Centimeter? The centimeter is a part of the metric system. In a standard centimeter ruler is 30cm wide in worldwide. Like in the imperial ruler (Inches) we work on fraction but in metric ruler (Centimeter) we don't work on fraction instead of fraction we use points system in the metric ruler. How to read Centimeter ruler? 1 cm is equal to 0.39 inch as you can see on the cm ruler image above there are many lines many small and some long lines. All the lines represent mm, one line is equal to one mm or 0.1 cm. 10 lines are equal to 1 cm, in the middle of the 10 lines longer lines it represents 0.5cm How to Convert Centimeters to Inches Convert Centimetres to inches use this formal inches = centimeters / 2.54. For example, you convert 17 CM to Inches. Inches = 17/2.54. After that, you get 6.69 Inches. How many CM in 12 Inches ruler 30.48 CM in 12 Inches ruler for more detail see our CM to Inches conversion table or you can convert any number to inches our online length convert web app. 1 centimeter (cm) = 10 millimeters (mm)There are 2.54 centimeters in an inch.A 12 inch ruler is about 30 cm long. This is a convenient online ruler that could be calibrated to actual size, measurements in cm, mm and inch, the upper half is the millimeter ruler and centimeter ruler, the lower half is an inch ruler. In order to accurately measure the length of your item, we strongly recommend that you calibrate this online ruler first, set the correct pixels per inch to your own device, after adjustment, you will have the most precise ruler online. It can talk This page is a darknet that can't be found on Google, add it to your bookmark, favorites, otherwise you will lose it. To have the most accurate ruler online, just set the pixels per inch(PPI), below are some ways to know the pixels per inch to your device. My laptop has a wide screen (13.6"x7.6"), and resolution is 1366x768 pixels, 1366 / 13.6 = 100.44 PPI. The screen resolution of your current device is pixels. Search "display by pixel density" online, check if there has your device's brand and model, i am lucky and found my screen has 100 PPI. Use standard objects to compare lengths, check your wallet, use any paper money to be our compare object, then search "the width of your paper money" online, when you know the width, you can adjust the ruler's PPI setting by it, you can compare to any standard size object at your side, e.g., coin, credit card, CD, paper money, mobile phone, in the office, a A4 size printable paper is a good comparison object, the longer the more accurate. Below ruler adjuster help us to calibrate accuracy more easily. The most accurate way, after i measure the size of virtual ruler by an actual ruler, i found the markings are not very accurate at 30cm, so i adjust the default pixels per inch(PPI) to 100.7, now i have the most accurate virtual ruler on the web. Each device has it's own PPI, eg. my Asus laptop is 100.7 PPI, Apple MacBook Air is 127.7 PPI, Xiaomi Mi Pad 3 is 163 PPI, my mobile phones (Sony Xperia C5, OPPO R11 Plus) are both 122.6 PPI, Apple iPhone 5 is 163 PPI, iPhone 7 is 162 PPI, iPhone X is 151.7 PPI. All you need is a web browser and a credit card to compare physical sizes, no installation required, free to use, and works on your phone screen as well. Compare ruler with credit card Dragging ruler adjuster left or right to fit the size of your reference object, remember to save the setting for the next time you use it, after save the setting, refresh your browser to check the result. On the most popular browsers you can press the F5 key or click on the refresh button. Translate into your native language This online ruler is free to use, and we want to provide a better native language environment, make it more natural and easier for everyone to use, if you are willing to offer a better description in your native language, benefit your fellow countrymen, please visit this translation page(click). Below are some other language version. The story of our Ruler One day, i took my laptop computer to work in the coffee shop, just had a project on hand, and i had to tell the customer the actual size of a product. Just like usual, i didn't carry a ruler with me, so i connected to the internet and tried to find an online virtual ruler to measure my product. Unfortunately, after i tried the virtual online rulers on the Internet, i found a problem that these existing online rules are not very accurate. If i just want to know what the approximate length is, that's fine, but what i need is a more precise length so that i can apply it to my daily work. So later, we developed an online ruler by ourselves. It not only improves the accuracy of the measurement, but also has a scale of inches and centimeters so that it can be used in our work. If you are like us, you need a precise online ruler to measure the product size, i believe this online virtual ruler can also meet your needs. Red vertical line Clicking on the ruler will mark a red vertical line for easy comparison of metric and imperial lengths. How to read a ruler Move your mouse cursor over the ruler and it will show the length. If you touch or click on it, it will talk to you, if you don't know how to read the ruler, try clicking on it, click in different places, it will tell you the length, it's kind of interesting. Command function I am very happy that many people like our online ruler, also i am very excited to review all the comments from all the visitors. Regarding the joke about comments or commands here, i decided to add a new "command" function on the page top) for our dear friends. In addition to showing the length, i also added a comparison command, I try to make the AI interaction smarter, hope you like our new command function @, welcome to try it and share it, let me know your idea. command examples : show 12 mm, show 2.3 cm, show me 5/2 in, show me 6.4 inches, show me how long 1 inch is, show 1 ft...etc. compare 4 in and 10 cm, compare 12.5 cm and 1 3/4 in Browser zoom level The zoom ratio of current page is 100%, we recommend using a fixed zoom ratio of 100%, different zoom ratios will affect the accuracy of the ruler, please compare the physical item and calibrate the ruler setting by yourself. Changing the system font size on the phone will affect the layout of the web page, just use the pinch gesture to bring your fingers together to reduce the page size, zoom out to the minimum and you can see the full size ruler. Our Facebook pages Tell me what are you measuring? Does this online ruler help you? Turn your smartphone and tablet to a ruler and measure the scale of any small thing. Scan above QR code to open browser, and turn your mobile phone screen to landscape mode, so that the length of online ruler will longer. If the dynamic ruler doesn't redraw after you rotate the smartphone, please refresh your browser When you need to measure the length of something, it is always impossible to find a ruler, our digital online ruler can help you, support both metric and imperial units, it can be calibrated quickly and the measurement is very accurate. Share to your good friends Welcome to share this online ruler to your friends, if you do like it. Could not find a real ruler on your desktop ? try this virtual screen ruler. Convert MM/CM to Inches : convert mm to inches, cm to inches, inches to cm/mm, include convert decimal inch to fractional inch (e.g. 1.45" = 1 7/16"). Where is 1.8" in on a 12" ruler? Where is the 3.2 cm in the 12 inches ruler ? Try this cm inch converter. Converter Meters to Feet : convert meters, feet and inches (m, ft and in), convert yards to Meters : yards & meter converter, convert yards to meters, or meters to yards. Convert CM to MM : convert millimeters/millimeter(mm) to centimeters/centimeter(cm), or reverse convert. This ruler measure in two different units of length, inches on one side (English ruler) and centimeters on the other side (metric ruler). A metric ruler is use to measure centimeter(cm) and millimeter(mm), the centimeter is a unit of length in the International System of Units; An English ruler provides incremental measurements in inches, with each inch further divided into smaller fractions. Read an English ruler using fractions of an inch. The distance between any two large numbered lines is 1 inch. The large unnumbered line that is halfway between them is 1/2 inch. The smaller (but still prominent) line between the 1/2 mark and the numbered inch line is 1/4 inch. The tiny little lines between all of the more prominent lines are 1/16 inch. Observe the much simpler metric rulers. The distance between any two large numbered lines is 1 cm, a metric ruler features two types of lines. The largest mark centimeters, or cm. The smallest lines mark millimeters, or mm. The prominent line between any two numbered lines is 1/2 cm. The small lines between the 1/2 mark and the numbered centimeter mark are 1/10 cm, otherwise known as a millimeter, keep in mind that there are 10 mm to 1 cm. The measurements are decimalized and there are no fractions. Record distances by the name of the line that it most closely matches. If the length of an object goes to one mark past the halfway mark on your ruler then it will be 9/16 inch on an English ruler or 6/10 cm (or 6 mm) on a metric ruler. The Online Ruler Tool is a simple and accurate way to measure objects directly from your screen. It allows users to measure in centimeters (cm), millimeters (mm), and inches without needing a physical ruler. This tool is useful for students, designers, and anyone who needs quick measurements. Online Ruler shows a virtual ruler on your screen that you can use to measure objects by placing them on the screen. It works with three different scales: centimeters, millimeters, and inches. To get accurate results, you may need to calibrate the ruler by adjusting the scale to match your screen size. Select your device from the list or enter the size of your screen diagonal in inches. We have added the most popular devices to the list. (All devices have different pixels per inch - read more about PPI here). Multiple Measurement Units. Supports cm, mm, and inches. Easy Calibration: Choose your device from the list. Works on Any Device: Accessible on computers, tablets, and smartphones. No Installation Needed: The tool runs directly in your web browser without requiring downloads. A digital ruler is a convenient tool that helps measure objects accurately without needing a physical ruler. Here's why it's useful: For Design & Creativity - Graphic designers, digital artists, and UI/UX professionals often need precise measurements. The online ruler makes it easy to check dimensions quickly. For Students & Teachers - Whether for geometry, science projects, or classroom exercises, an online ruler is a great tool for students learning about measurements. For Everyday Use - Need to measure paper, a small object, or even your screen size? This ruler is accessible anywhere, making it perfect for quick, on-the-go measurements. To ensure accuracy, follow these steps: Calibrate your ruler - Because screen sizes vary, calibration is key. You can do this by comparing the online ruler to a physical one, or by adjusting it based on your display settings. Use the correct display settings - Make sure your browser zoom is set to 100% for the most accurate results. Choose the right unit - Easily switch between centimeters, millimeters, and inches for the most relevant measurement. By following these steps, you'll get accurate and reliable measurements every time. The on-screen measuring ruler is a tool that lets you do an onscreen measurement in cm or inches and get the needed dimensions of an object from your computer, tablet, or smartphone screens. Schools, workers and project supervisors use the online rulers as a stimulation of the physical ruler to get accurate dimensions based on the screen size.If you are a student or a worker in a modern day job or office especially construction and technical drawing works, Here is how you can use our ruler for accuracy of measurement. Now follow this simple steps.Line up the objects: Start by Placing the objects which might be papers, cards or any item directly on the screen ruler.Pick the units: choose from either inches or centimeters based on your needs. You can switch between both units.Alter the rulers scale - If you aren't getting the right measurement, you can easily calibrate it by adjusting your screen size or using a known measurement item for example a Creditcard. Now Lets explain the steps.A ruler has different numbers and lines on its side. Have you found out which side is centimeters or inches? Well, take a look and see how we uncover it in the following steps below.There is a little trick i have used such as bending my middle finger and placing it on the ruler lines. When you bend your fingers and put them on the lines, you get about a 1 inch. Then you will know you are measuring from the inches side as indicated in the image.You will see about an inch of your finger. The interesting thing is that it's about 1 inch for a child or an adult. This is a good way to know that you're dealing with inches.When measuring the centimeters, take your pinky finger and place it on the ruler. You'll see your pinky finger is about 1 cm. So, that helps you to know which units you are using.When carrying out a ruler measurement, ensure that what you're measuring is aligned with the zero point. So here we see, we're not at the zero point, the Zero's here in the middle and if we want.Take the object you want to measurePlace it so it is aligned starting from the zero point. This will help us reach an accurate measurement.Let's, Let's measure next and it's just okay, I'm going to measure this little bottom.And so I'm going to again, ensure I'm aligned Zero point. And then I'm going to look on the side opposite of zero and see that this is about 1s not exactly but we're looking for approximately. It's much more than 4. It's much closer to 5, so we'd say a little less than 5 inches.Measuring a preise pass. We can see that this i again, it's between the 4 and the 5 but it's a lot closer to the 4 in Mark. Let's get that zero.So i would say it's a little more than 4 inches. When you're measuring real life, things do not work out perfectly.The sunglasses. So, i need toPut my zero on the end of what I'm measuring. And then look on the opposite side.Took the longest part of I'm trying to discuss.With the length. See that this is about 5 and a half. Inches.The accurate i could go for the smaller measure which is the same meters. Most of the world measures in centimeters, so it's very good to know how to do this. All right experimentTo ensure the ruler displays correct measurements, you often need to calibrate it based on your device's screen diagonal (e.g., 13-inch laptop, 24-inch monitor). Here's how-Measure the diagonal: Get a physical ruler and measure right through the diagonal of your screen.Enter the right values: place the exact screen diagonal into the online ruler settings. This will adjust it to scale to show accurate readings.Change your device: Are you using a smartphone, Laptop or a , or TV, just set the diagonal size according to the screen types.A popular method of calibration method for an online ruler is using a standard credit or DebitcardThe reason why Creditcards are sometimes used is that its is 85.60 mm or 3.37 inches wide. Online rulers are designed to use this readings for easy.Follow this simple process to get it done: Simply place the card on the screen and adjust the virtual ruler until the width matches exactly. This ensures accurate scaling for future measurements.The accuracy of an on-screen ruler depends on the display's pixel density and the input screen size:Pixel density (PPI): Devices with different screen densities display content differently. Higher PPI means smaller items on the screen, so rulers need to be calibrated accordingly.Once it's calibrated, the ruler gives the correct dimensions according to the screen's PPI.If you have a 15.6-inch laptop screen, you can input this diagonal size, and the ruler will adjust to display accurate inches/centimeters.Using the credit card method, if you find that the ruler's card width does not match a physical card, you can scale it until the measurements are accurate.On a document , there are two kind of ruler bars.The horizontal ruler bar, and the vertical ruler bar.The horizontal ruler bar is usually seen at the top of the page and its used in setting the top of the margins.The vertical bar is found the left part of the page and we use them in setting the top and bottom margins.A scale ruler is a measuring tool for lengths at a fixed ratio of length. For example, we have the triangular scale commonly used by construction workers, the Architect scale commonly used by engineers and architects. Yes, Scale is another word for ruler and its mostly used interchangeably with ruler . Engineers use scale rulers to mean a flat marked stick used in taking our length differs. Scales, centimeters, millimeters, and inches. To get accurate results, you may need to calibrate the ruler by adjusting the scale to match your screen size. Select your device from the list or enter the size of your screen diagonal in inches. We have added the most popular devices to the list. (All devices have different pixels per inch - read more about PPI here). Multiple Measurement Units. Supports cm, mm, and inches. Easy Calibration: Choose your device from the list. Works on Any Device: Accessible on computers, tablets, and smartphones. No Installation Needed: The tool runs directly in your web browser without requiring downloads. A digital ruler is a convenient tool that helps measure objects accurately without needing a physical ruler. Here's why it's useful: For Design & Creativity - Graphic designers, digital artists, and UI/UX professionals often need precise measurements. The online ruler makes it easy to check dimensions quickly. For Students & Teachers - Whether for geometry, science projects, or classroom exercises, an online ruler is a great tool for students learning about measurements. For Everyday Use - Need to measure paper, a small object, or even your screen size? This ruler is accessible anywhere, making it perfect for quick, on-the-go measurements. To ensure accuracy, follow these steps: Calibrate your ruler - Because screen sizes vary, calibration is key. You can do this by comparing the online ruler to a physical one, or by adjusting it based on your display settings. Use the correct display settings - Make sure your browser zoom is set to 100% for the most accurate results. Choose the right unit - Easily switch between centimeters, millimeters, and inches for the most relevant measurement. By following these steps, you'll get accurate and reliable measurements every time. The on-screen measuring ruler is a tool that lets you do an onscreen measurement in cm or inches and get the needed dimensions of an object from your computer, tablet, or smartphone screens. Schools, workers and project supervisors use the online rulers as a stimulation of the physical ruler to get accurate dimensions based on the screen size.If you are a student or a worker in a modern day job or office especially construction and technical drawing works, Here is how you can use our ruler for accuracy of measurement. Now follow this simple steps.Line up the objects: Start by Placing the objects which might be papers, cards or any item directly on the screen ruler.Pick the units: choose from either inches or centimeters based on your needs. You can switch between both units.Alter the rulers scale - If you aren't getting the right measurement, you can easily calibrate it by adjusting your screen size or using a known measurement item for example a Creditcard. Now Lets explain the steps.A ruler has different numbers and lines on its side. Have you found out which side is centimeters or inches? Well, take a look and see how we uncover it in the following steps below.There is a little trick i have used such as bending my middle finger and placing it on the ruler lines. When you bend your fingers and put them on the lines, you get about a 1 inch. Then you will know you are measuring from the inches side as indicated in the image.You will see about an inch of your finger. The interesting thing is that it's about 1 inch for a child or an adult. This is a good way to know that you're dealing with inches.When measuring the centimeters, take your pinky finger and place it on the ruler. You'll see your pinky finger is about 1 cm. So, that helps you to know which units you are using.When carrying out a ruler measurement, ensure that what you're measuring is aligned with the zero point. So here we see, we're not at the zero point, the Zero's here in the middle and if we want.Take the object you want to measurePlace it so it is aligned starting from the zero point. This will help us reach an accurate measurement.Let's, Let's measure next and it's just okay, I'm going to measure this little bottom.And so I'm going to again, ensure I'm aligned Zero point. And then I'm going to look on the side opposite of zero and see that this is about 1s not exactly but we're looking for approximately. It's much more than 4. It's much closer to 5, so we'd say a little less than 5 inches.Measuring a preise pass. We can see that this i again, it's between the 4 and the 5 but it's a lot closer to the 4 in Mark. Let's get that zero.So i would say it's a little more than 4 inches. When you're measuring real life, things do not work out perfectly.The sunglasses. So, i need toPut my zero on the end of what I'm measuring. And then look on the opposite side.Took the longest part of I'm trying to discuss.With the length. See that this is about 5 and a half. Inches.The accurate i could go for the smaller measure which is the same meters. Most of the world measures in centimeters, so it's very good to know how to do this. All right experimentTo ensure the ruler displays correct measurements, you often need to calibrate it based on your device's screen diagonal (e.g., 13-inch laptop, 24-inch monitor). Here's how-Measure the diagonal: Get a physical ruler and measure right through the diagonal of your screen.Enter the right values: place the exact screen diagonal into the online ruler settings. This will adjust it to scale to show accurate readings.Change your device: Are you using a smartphone, Laptop or a , or TV, just set the diagonal size according to the screen types.A popular method of calibration method for an online ruler is using a standard credit or DebitcardThe reason why Creditcards are sometimes used is that its is 85.60 mm or 3.37 inches wide. Online rulers are designed to use this readings for easy.Follow this simple process to get it done: Simply place the card on the screen and adjust the virtual ruler until the width matches exactly. This ensures accurate scaling for future measurements.The accuracy of an on-screen ruler depends on the display's pixel density and the input screen size:Pixel density (PPI): Devices with different screen densities display content differently. Higher PPI means smaller items on the screen, so rulers need to be calibrated accordingly.Once it's calibrated, the ruler gives the correct dimensions according to the screen's PPI.If you have a 15.6-inch laptop screen, you can input this diagonal size, and the ruler will adjust to display accurate inches/centimeters.Using the credit card method, if you find that the ruler's card width does not match a physical card, you can scale it until the measurements are accurate.On a document , there are two kind of ruler bars.The horizontal ruler bar, and the vertical ruler bar.The horizontal ruler bar is usually seen at the top of the page and its used in setting the top of the margins.The vertical bar is found the left part of the page and we use them in setting the top and bottom margins.A scale ruler is a measuring tool for lengths at a fixed ratio of length. For example, we have the triangular scale commonly used by construction workers, the Architect scale commonly used by engineers and architects. Yes, Scale is another word for ruler and its mostly used interchangeably with ruler . Engineers use scale rulers to mean a flat marked stick used in taking our length differs. Scales, centimeters, millimeters, and inches. To get accurate results, you may need to calibrate the ruler by adjusting the scale to match your screen size. Select your device from the list or enter the size of your screen diagonal in inches. We have added the most popular devices to the list. (All devices have different pixels per inch - read more about PPI here). Multiple Measurement Units. Supports cm, mm, and inches. Easy Calibration: Choose your device from the list. Works on Any Device: Accessible on computers, tablets, and smartphones. No Installation Needed: The tool runs directly in your web browser without requiring downloads. A digital ruler is a convenient tool that helps measure objects accurately without needing a physical ruler. Here's why it's useful: For Design & Creativity - Graphic designers, digital artists, and UI/UX professionals often need precise measurements. The online ruler makes it easy to check dimensions quickly. For Students & Teachers - Whether for geometry, science projects, or classroom exercises, an online ruler is a great tool for students learning about measurements. For Everyday Use - Need to measure paper, a small object, or even your screen size? This ruler is accessible anywhere, making it perfect for quick, on-the-go measurements. To ensure accuracy, follow these steps: Calibrate your ruler - Because screen sizes vary, calibration is key. You can do this by comparing the online ruler to a physical one, or by adjusting it based on your display settings. Use the correct display settings - Make sure your browser zoom is set to 100% for the most accurate results. Choose the right unit - Easily switch between centimeters, millimeters, and inches for the most relevant measurement. By following these steps, you'll get accurate and reliable measurements every time. The on-screen measuring ruler is a tool that lets you do an onscreen measurement in cm or inches and get the needed dimensions of an object from your computer, tablet, or smartphone screens. Schools, workers and project supervisors use the online rulers as a stimulation of the physical ruler to get accurate dimensions based on the screen size.If you are a student or a worker in a modern day job or office especially construction and technical drawing works, Here is how you can use our ruler for accuracy of measurement. Now follow this simple steps.Line up the objects: Start by Placing the objects which might be papers, cards or any item directly on the screen ruler.Pick the units: choose from either inches or centimeters based on your needs. You can switch between both units.Alter the rulers scale - If you aren't getting the right measurement, you can easily calibrate it by adjusting your screen size or using a known measurement item for example a Creditcard. Now Lets explain the steps.A ruler has different numbers and lines on its side. Have you found out which side is centimeters or inches? Well, take a look and see how we uncover it in the following steps below.There is a little trick i have used such as bending my middle finger and placing it on the ruler lines. When you bend your fingers and put them on the lines, you get about a 1 inch. Then you will know you are measuring from the inches side as indicated in the image.You will see about an inch of your finger. The interesting thing is that it's about 1 inch for a child or an adult. This is a good way to know that you're dealing with inches.When measuring the centimeters, take your pinky finger and place it on the ruler. You'll see your pinky finger is about 1 cm. So, that helps you to know which units you are using.When carrying out a ruler measurement, ensure that what you're measuring is aligned with the zero point. So here we see, we're not at the zero point, the Zero's here in the middle and if we want.Take the object you want to measurePlace it so it is aligned starting from the zero point. This will help us reach an accurate measurement.Let's, Let's measure next and it's just okay, I'm going to measure this little bottom.And so I'm going to again, ensure I'm aligned Zero point. And then I'm going to look on the side opposite of zero and see that this is about 1s not exactly but we're looking for approximately. It's much more than 4. It's much closer to 5, so we'd say a little less than 5 inches.Measuring a preise pass. We can see that this i again, it's between the 4 and the 5 but it's a lot closer to the 4 in Mark. Let's get that zero.So i would say it's a little more than 4 inches. When you're measuring real life, things do not work out perfectly.The sunglasses. So, i need toPut my zero on the end of what I'm measuring. And then look on the opposite side.Took the longest part of I'm trying to discuss.With the length. See that this is about 5 and a half. Inches.The accurate i could go for the smaller measure which is the same meters. Most of the world measures in centimeters, so it's very good to know how to do this. All right experimentTo ensure the ruler displays correct measurements, you often need to calibrate it based on your device's screen diagonal (e.g., 13-inch laptop, 24-inch monitor). Here's how-Measure the diagonal: Get a physical ruler and measure right through the diagonal of your screen.Enter the right values: place the exact screen diagonal into the online ruler settings. This will adjust it to scale to show accurate readings.Change your device: Are you using a smartphone, Laptop or a , or TV, just set the diagonal size according to the screen types.A popular method of calibration method for an online ruler is using a standard credit or DebitcardThe reason why Creditcards are sometimes used is that its is 85.60 mm or 3.37 inches wide. Online rulers are designed to use this readings for easy.Follow this simple process to get it done: Simply place the card on the screen and adjust the virtual ruler until the width matches exactly. This ensures accurate scaling for future measurements.The accuracy of an on-screen ruler depends on the display's pixel density and the input screen size:Pixel density (PPI): Devices with different screen densities display content differently. Higher PPI means smaller items on the screen, so rulers need to be calibrated accordingly.Once it's calibrated, the ruler gives the correct dimensions according to the screen's PPI.If you have a 15.6-inch laptop screen, you can input this diagonal size, and the ruler will adjust to display accurate inches/centimeters.Using the credit card method, if you find that the ruler's card width does not match a physical card, you can scale it until the measurements are accurate.On a document , there are two kind of ruler bars.The horizontal ruler bar, and the vertical ruler bar.The horizontal ruler bar is usually seen at the top of the page and its used in setting the top of the margins.The vertical bar is found the left part of the page and we use them in setting the top and bottom margins.A scale ruler is a measuring tool for lengths at a fixed ratio of length. For example, we have the triangular scale commonly used by construction workers, the Architect scale commonly used by engineers and architects. Yes, Scale is another word for ruler and its mostly used interchangeably with ruler . Engineers use scale rulers to mean a flat marked stick used in taking our length differs. Scales, centimeters, millimeters, and inches. To get accurate results, you may need to calibrate the ruler by adjusting the scale to match your screen size. Select your device from the list or enter the size of your screen diagonal in inches. We have added the most popular devices to the list. (All devices have different pixels per inch - read more about PPI here). Multiple Measurement Units. Supports cm, mm, and inches. Easy Calibration: Choose your device from the list. Works on Any Device: Accessible on computers, tablets, and smartphones. No Installation Needed: The tool runs directly in your web browser without requiring downloads. A digital ruler is a convenient tool that helps measure objects accurately without needing a physical ruler. Here's why it's useful: For Design & Creativity - Graphic designers, digital artists, and UI/UX professionals often need precise measurements. The online ruler makes it easy to check dimensions quickly. For Students & Teachers - Whether for geometry, science projects, or classroom exercises, an online ruler is a great tool for students learning about measurements. For Everyday Use - Need to measure paper, a small object, or even your screen size? This ruler is accessible anywhere, making it perfect for quick, on-the-go measurements. To ensure accuracy, follow these steps: Calibrate your ruler - Because screen sizes vary, calibration is key. You can do this by comparing the online ruler to a physical one, or by adjusting it based on your display settings. Use the correct display settings - Make sure your browser zoom is set to 100% for the most accurate results. Choose the right unit - Easily switch between centimeters, millimeters, and inches for the most relevant measurement. By following these steps, you'll get accurate and reliable measurements every time. The on-screen measuring ruler is a tool that lets you do an onscreen measurement in cm or inches and get the needed dimensions of an object from your computer, tablet, or smartphone screens. Schools, workers and project supervisors use the online rulers as a stimulation of the physical ruler to get accurate dimensions based on the screen size.If you are a student or a worker in a modern day job or office especially construction and technical drawing works, Here is how you can use our ruler for accuracy of measurement. Now follow this simple steps.Line up the objects: Start by Placing the objects which might be papers, cards or any item directly on the screen ruler.Pick the units: choose from either inches or centimeters based on your needs. You can switch between both units.Alter the rulers scale - If you aren't getting the right measurement, you can easily calibrate it by adjusting your screen size or using a known measurement item for example a Creditcard. Now Lets explain the steps.A ruler has different numbers and lines on its side. Have you found out which side is centimeters or inches? Well, take a look and see how we uncover it in the following steps below.There is a little trick i have used such as bending my middle finger and placing it on the ruler lines. When you bend your fingers and put them on the lines, you get about a 1 inch. Then you will know you are measuring from the inches side as indicated in the image.You will see about an inch of your finger. The interesting thing is that it's about 1 inch for a child or an adult. This is a good way to know that you're dealing with inches.When measuring the centimeters, take your pinky finger and place it on the ruler. You'll see your pinky finger is about 1 cm. So, that helps you to know which units you are using.When carrying out a ruler measurement, ensure that what you're measuring is aligned with the zero point. So here we see, we're not at the zero point, the Zero's here in the middle and if we want.Take the object you want to measurePlace it so it is aligned starting from the zero point. This will help us reach an accurate measurement.Let's, Let's measure next and it's just okay, I'm going to measure this little bottom.And so I'm going to again, ensure I'm aligned Zero point. And then I'm going to look on the side opposite of zero and see that this is about 1s not exactly but we're looking for approximately. It's much more than 4. It's much closer to 5, so we'd say a little less than 5 inches.Measuring a preise pass. We can see that this i again, it's between the 4 and the 5 but it's a lot closer to the 4 in Mark. Let's get that zero.So i would say it's a little more than 4 inches. When you're measuring real life, things do not work out perfectly.The sunglasses. So, i need toPut my zero on the end of what I'm measuring. And then look on the opposite side.Took the longest part of I'm trying to discuss.With the length. See that this is about 5 and a half. Inches.The accurate i could go for the smaller measure which is the same meters. Most of the world measures in centimeters, so it's very good to know how to do this. All right experimentTo ensure the ruler displays correct measurements, you often need to calibrate it based on your device's screen diagonal (e.g., 13-inch laptop, 24-inch monitor). Here's how-Measure the diagonal: Get a physical ruler and measure right through the diagonal of your screen.Enter the right values: place the exact screen diagonal into the online ruler settings. This will adjust it to scale to show accurate readings.Change your device: Are you using a smartphone, Laptop or a , or TV, just set the diagonal size according to the screen types.A popular method of calibration method for an online ruler is using a standard credit or DebitcardThe reason why Creditcards are sometimes used is that its is 85.60 mm or 3.37 inches wide. Online rulers are designed to use this readings for easy.Follow this simple process to get it done: Simply place the card on the screen and adjust the virtual ruler until the width matches exactly. This ensures accurate scaling for future measurements.The accuracy of an on-screen ruler depends on the display's pixel density and the input screen size:Pixel density (PPI): Devices with different screen densities display content differently. Higher PPI means smaller items on the screen, so rulers need to be calibrated accordingly.Once it's calibrated, the ruler gives the correct dimensions according to the screen's PPI.If you have a 15.6-inch laptop screen, you can input this diagonal size, and the ruler will adjust to display accurate inches/centimeters.Using the credit card method, if you find that the ruler's card width does not match a physical card, you can scale it until the measurements are accurate.On a document , there are two kind of ruler bars.The horizontal ruler bar, and the vertical ruler bar.The horizontal ruler bar is usually seen at the top of the page and its used in setting the top of the margins.The vertical bar is found the left part of the page and we use them in setting the top and bottom margins.A scale ruler is a measuring tool for lengths at a fixed ratio of length. For example, we have the triangular scale commonly used by construction workers, the Architect scale commonly used by engineers and architects. Yes, Scale is another word for ruler and its mostly used interchangeably with ruler . Engineers use scale rulers to mean a flat marked stick used in taking our length differs. Scales, centimeters, millimeters, and inches. To get accurate results, you may need to calibrate the ruler by adjusting the scale to match your screen size. Select your device from the list or enter the size of your screen diagonal in inches. We have added the most popular devices to the list. (All devices have different pixels per inch - read more about PPI here). Multiple Measurement Units. Supports cm, mm, and inches. Easy Calibration: Choose your device from the list. Works on Any Device: Accessible on computers, tablets, and smartphones. No Installation Needed: The tool runs directly in your web browser without requiring downloads. A digital ruler is a convenient tool that helps measure objects accurately without needing a physical ruler. Here's why it's useful: For Design & Creativity - Graphic designers, digital artists, and UI/UX professionals often need precise measurements. The online ruler makes it easy to check dimensions quickly. For Students & Teachers - Whether for geometry, science projects, or classroom exercises, an online ruler is a great tool for students learning about measurements. For Everyday Use - Need to measure paper, a small object, or even your screen size? This ruler is accessible anywhere, making it perfect for quick, on-the-go measurements. To ensure accuracy, follow these steps: Calibrate your ruler - Because screen sizes vary, calibration is key. You can do this by comparing the online ruler to a physical one, or by adjusting it based on your display settings. Use the correct display settings - Make sure your browser zoom is set to 100% for the most accurate results. Choose the right unit - Easily switch between centimeters, millimeters, and inches for the most relevant measurement. By following these steps, you'll get accurate and reliable measurements every time. The on-screen measuring ruler is a tool that lets you do an onscreen measurement in cm or inches and get the needed dimensions of an object from your computer, tablet, or smartphone screens. Schools, workers and project supervisors use the online rulers as a stimulation of the physical ruler to get accurate dimensions based on the screen size.If you are a student or a worker in a modern day job or office especially construction and technical drawing works, Here is how you can use our ruler for accuracy of measurement. Now follow this simple steps.Line up the objects: Start by Placing the objects which might be papers, cards or any item directly on the screen ruler.Pick the units: choose from either inches or centimeters based on your needs. You can switch between both units.Alter the rulers scale - If you aren't getting the right measurement, you can easily calibrate it by adjusting your screen size or using a known measurement item for example a Creditcard. Now Lets explain the steps.A ruler has different numbers and lines on its side. Have you found out which side is centimeters or inches? Well, take a look and see how we uncover it in the following steps below.There is a little trick i have used such as bending my middle finger and placing it on the ruler lines. When you bend your fingers and put them on the lines, you get about a 1 inch. Then you will know you are measuring from the inches side as indicated in the image.You will see about an inch of your finger. The interesting thing is that it's about 1 inch for a child or an adult. This is a good way to know that you're dealing with inches.When measuring the centimeters, take your pinky finger and place it on the ruler. You'll see your pinky finger is about 1 cm. So, that helps you to know which units you are using.When carrying out a ruler measurement, ensure that what you're measuring is aligned with the zero point. So here we see, we're not at the zero point, the Zero's here in the middle and if we want.Take the object you want to measurePlace it so it is aligned starting from the zero point. This will help us reach an accurate measurement.Let's, Let's measure next and it's just okay, I'm going to measure this little bottom.And so I'm going to again, ensure I'm aligned Zero point. And then I'm going to look on the side opposite of zero and see that this is about 1s not exactly but we're looking for approximately. It's much more than 4. It's much closer to 5, so we'd say a little less than 5 inches.Measuring a preise pass. We can see that this i again, it's between the 4 and the 5 but it's a lot closer to the 4 in Mark. Let's get that zero.So i would say it's a little more than 4 inches. When you're measuring real life, things do not work out perfectly.The sunglasses. So, i need toPut my zero on the end of what I'm measuring. And then look on the opposite side.Took the longest part of I'm trying to discuss.With the length. See that this is about 5 and a half. Inches.The accurate i could go for the smaller measure which is the same meters. Most of the world measures in centimeters, so it's very good to know how to do this. All right experimentTo ensure the ruler displays correct measurements, you often need to calibrate it based on your device's screen diagonal (e.g., 13-inch laptop, 24-inch monitor). Here's how-Measure the diagonal: Get a physical ruler and measure right through the diagonal of your screen.Enter the right values: place the exact screen diagonal into the online ruler settings. This will adjust it to scale to show accurate readings.Change your device: Are you using a smartphone, Laptop or a , or TV, just set the diagonal size according to the screen types.A popular method of calibration method for an online ruler is using a standard credit or DebitcardThe reason why Creditcards are sometimes used is that its is 85.60 mm or 3.37 inches wide. Online rulers are designed to use this readings for easy.Follow this simple process to get it done: Simply place the card on the screen and adjust the virtual ruler until the width matches exactly. This ensures accurate scaling for future measurements.The accuracy of an on-screen ruler depends on the display's pixel density and the input screen size:Pixel density (PPI): Devices with different screen densities display content differently. Higher PPI means smaller items on the screen, so rulers need to be calibrated accordingly.Once it's calibrated, the ruler gives the correct dimensions according to the screen's PPI.If you have a 15.6-inch laptop screen, you can input this diagonal size, and the ruler will adjust to display accurate inches/centimeters.Using the credit card method, if you find that the ruler's card width does not match a physical card, you can scale it until the measurements are accurate.On a document , there are two kind of ruler bars.The horizontal ruler bar, and the vertical ruler bar.The horizontal ruler bar is usually seen at the top of the page and its used in setting the top of the margins.The vertical bar is found the left part of the page and we use them in setting the top and bottom margins.A scale ruler is a measuring tool for lengths at a fixed ratio of length. For example, we have the triangular scale commonly used by construction workers, the Architect scale commonly used by engineers and architects. Yes, Scale is another word for ruler and its mostly used interchangeably with ruler . Engineers use scale rulers to mean a flat marked stick used in taking our length differs. Scales, centimeters, millimeters, and inches. To get accurate results, you may need to calibrate the ruler by adjusting the scale to match your screen size. Select your device from the list or enter the size of your screen diagonal in inches. We have added the most popular devices to the list. (All devices have different pixels per inch - read more about PPI here). Multiple Measurement Units. Supports cm, mm, and inches. Easy Calibration: Choose your device from the list. Works on Any Device: Accessible on computers, tablets, and smartphones. No Installation Needed: The tool runs directly in your web browser without requiring downloads. A digital ruler is a convenient tool that helps measure objects accurately without needing a physical ruler. Here's why it's useful: For Design & Creativity - Graphic designers, digital artists, and UI/UX professionals often need precise measurements. The online ruler makes it easy to check dimensions quickly. For Students & Teachers - Whether for geometry, science projects, or classroom exercises, an online ruler is a great tool for students learning about measurements. For Everyday Use - Need to measure paper, a small object, or even your screen size? This ruler is accessible anywhere, making it perfect for quick, on-the-go measurements. To ensure accuracy, follow these steps: Calibrate your ruler - Because screen sizes vary, calibration is key. You can do this by comparing the online ruler to a physical one, or by adjusting it based on your display settings. Use the correct display settings - Make sure your browser zoom is set to 100% for the most accurate results. Choose the right unit - Easily switch between centimeters, millimeters, and inches for the most relevant measurement. By following these steps, you'll get accurate and reliable measurements every time. The on-screen measuring ruler is a tool that lets you do an onscreen measurement in cm or inches and get the needed dimensions of an object from your computer, tablet, or smartphone screens. Schools, workers and project supervisors use the online rulers as a stimulation of the physical ruler to get accurate dimensions based on the screen size.If you are a student or a worker in a modern day job or office especially construction and technical drawing works, Here is how you can use our ruler for accuracy of measurement. Now follow this simple steps.Line up the objects: Start by Placing the objects which might be papers, cards or any item directly on the screen ruler.Pick the units: choose from either inches or centimeters based on your needs. You can switch between both units.Alter the rulers scale - If you aren't getting the right measurement, you can easily calibrate it by adjusting your screen size or using a known measurement item for example a Creditcard. Now Lets explain the steps.A ruler has different numbers and lines on its side. Have you found out which side is centimeters or inches? Well, take a look and see how we uncover it in the following steps below.There is a little trick i have used such as bending my middle finger and placing it on the ruler lines. When you bend your fingers and put them on the lines, you get about a 1 inch. Then you will know you are measuring from the inches side as indicated in the image.You will see about an inch of your finger. The interesting thing is that it's about 1 inch for a child or an adult. This is a good way to know that you're dealing with inches.When measuring the centimeters, take your pinky finger and place it on the ruler. You'll see your pinky finger is about 1 cm. So, that helps you to know which units you are using.When carrying out a ruler measurement, ensure that what you're measuring is aligned with the zero point. So here we see, we're not at the zero point, the Zero's here in the middle and if we want.Take the object you want to measurePlace it so it is aligned starting from the zero point. This will help us reach an accurate measurement.Let's, Let's measure next and it's just okay, I'm going to measure this little bottom.And so I'm going to again, ensure I'm aligned Zero point. And then I'm going to look on the side opposite of zero and see that this is about 1s not exactly but we're looking for approximately. It's much more than 4. It's much closer to 5, so we'd say a little less than 5 inches.Measuring a preise pass. We can see that this i again, it's between the 4 and the 5 but it's a lot closer to the 4 in Mark. Let's get that zero.So i would say it's a little more than 4 inches. When you're measuring real life, things do not work out perfectly.The sunglasses. So, i need toPut my zero on the end of what I'm measuring. And then look on the opposite side.Took the longest part of I'm trying to discuss.With the length. See that this is about 5 and a half. Inches.The accurate i could go for the smaller measure which is the same meters. Most of the world measures in centimeters, so it's very good to know how to do this. All right experimentTo ensure the ruler displays correct measurements, you often need to calibrate it based on your device's screen diagonal (e.g., 13-inch laptop, 24-inch monitor). Here's how-Measure the diagonal: Get a physical ruler and measure right through the diagonal of your screen.Enter the right values: place the exact screen diagonal into the online ruler settings. This will adjust it to scale to show accurate readings.Change your device: Are you using a smartphone, Laptop or a , or TV, just set the diagonal size according to the screen types.A popular method of calibration method for an online ruler is using a standard credit or DebitcardThe reason why Creditcards are sometimes used is that its is 85.60 mm or 3.37 inches wide. Online rulers are designed to use this readings for easy.Follow this simple process to get it done: Simply place the card on the screen and adjust the virtual ruler until the width matches exactly. This ensures accurate scaling for future measurements.The accuracy of an on-screen ruler depends on the display's pixel density and the input screen size:Pixel density (PPI): Devices with different screen densities display content differently. Higher PPI means smaller items on the screen