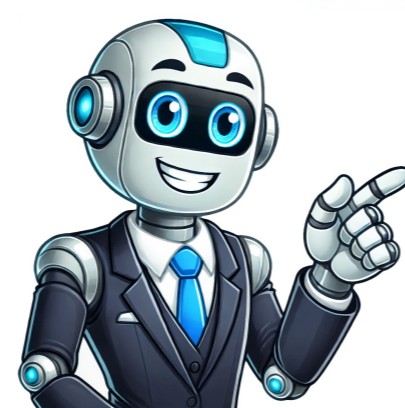


[Click Here](#)

































您可以通过机构特定的 Canvas URL、学校网站、课程邀请电子邮件、或 Canvas Student iOS 应用程序或 Canvas Student Android 应用程序访问 Canvas。您必须有帐户才能登录 Canvas。如果无法登录 Canvas，请查看故障排除步骤。注意：00:00: 我该如何以学生身份登录 Canvas？00:03: 您可以通过机构特定的 Canvas URL 访问 Canvas。Canvas URL 使用以下结构之一：[your institution's name].instructure.com。00:15: 或 canvas.[your institution's name].edu。您也可以使用 Canvas Student iOS 应用程序或 Canvas Students Android 应用程序查找您所在机构的 Canvas URL。一些机构还可能允许通过机构特定的身份验证系统访问 Canvas，该系统重定向到 Canvas，例如学校学生门户网站或网站。00:39: 找到您所在机构的 Canvas URL 后，您可以登录您的 Canvas 帐户。要登录，请输入您的凭据（或登录信息），这些凭据可能显示为您的电子邮件地址、用户名或登录 ID 和密码。00:56: 如果需要，根据您所在机构的设置，您可以点击忘记密码 (Forgot Password) 链接来重置密码。01:04: 如果需要，根据您所在机构的设置，您可以点击忘记密码 (Forgot Password) 链接来重置密码。01:12: 本指南介绍如何以学生身份登录 Canvas。找到您所在机构的 Canvas URL 后，您可以登录您的 Canvas 帐户。要登录，请输入您的凭据（或登录信息），这些凭据可能显示为您的电子邮件地址、用户名或登录 ID [1] 和密码 [2]。然后点击登录 (Login) 链接 [3]。如果需要，根据您所在机构的设置，您可以点击忘记密码 (Forgot Password) 链接来重置密码 [4]。注意：登录页面的显示可能会有所不同，这取决于您所在机构或您是否通过 Canvas Student 应用程序登录。Canvas Certified Technical Admin (CCTA) is for anyone who has admin capabilities in Canvas, or hopes to learn more about these options. Whether you're a brand new Canvas admin or a long-time pro, there's something in the CCTA program for everyone. This course is for anyone who will be using Canvas to create and deliver content. We will start with an introduction to your Canvas profile and Dashboard, and then move into all of the pieces of Canvas that make up a course space. Throughout this course, we will guide you through the completion of your Canvas Certified Power User Checklist. At the end of this 12-week course, you will be ready to begin using Canvas to design your own courses and content. Canvas Certified Educator (CCE) is for anyone who uses Canvas for teaching and learning. No matter your current level of Canvas usage, the CCE program will provide you with the real-world application you need to start making impactful changes today! Canvas Certified Educator (CCE) is for anyone who uses Canvas for teaching and learning. No matter your current level of Canvas usage, the CCE program will provide you with the real-world application you need to start making impactful changes today! View the script for this video To view subtitles for this video, click the button in the tool bar. This video is for Canvas Student app users on iOS and Android devices. The steps in this video are shown for a phone display, but unless otherwise noted, tablet displays mirror the same steps. To learn more about this topic, visit the Canvas Guides at guides.canvaslms.com. Additionally, permissions and login steps vary between users and institutions, so what you see in this video may be different from what you see in the Student app. Video overviews reflect current feature functionality in Canvas; they are updated based on workflow changes, not on minor or non-functional interface enhancements. Depending on your institution's Canvas theme, the Canvas interface may display differently than shown in this video, but the functionality is the same. Canvas Student App Video Script In this video, you will learn how to use the Canvas Student app. After opening the app, you may see previously used login credentials that you can use to log in. If this is your first time logging in, locate your institution by tapping the Find my school button. Enter the name of your institution or school district in the search field. When the full name displays in the search list, tap the name. You can also enter a Canvas URL in the search field. On the login page, enter your email and password. Then tap the Log In button. You can also log into Canvas by scanning a QR code in the web version of Canvas. Tap the QR Login link and then tap the Next link. In your User Navigation Menu of the web version of Canvas, click the QR for Mobile Login link. Hold your phone up to your computer screen to scan the QR code. Once the code is located, the app will update automatically. After logging in to the Student app, you will see your Dashboard, which displays your courses and groups. By default, your favorite courses are displayed. To adjust which courses are selected as favorites, tap the Edit link or All Courses link on iOS or the Edit Dashboard link on Android. To open a course, tap the course name. Courses open to the Course Navigation menu. To open a link from the menu, tap the name of the link. To view course assignments, tap the Assignments link. The Assignments page displays all assignments in your course. To view information about an assignment, tap the name. Each assignment displays relevant details, which may include the title, points possible, submission status, due date, submission types, allowable file types, and description. If your assignment has already been graded, the Details page displays the assignment grade. To view comments, file attachments, or the assignment rubric, tap the Submission & Rubric link. To submit your assignment, tap the Submit Assignment button then select the submission option you want to use. You can navigate to areas of the Student app by using the Navigation Bar at the bottom of the screen. To view your Calendar, tap the Calendar icon. The Calendar displays events and assignments for your personal, group, and course calendars. To view your To Do list, tap the To Do icon. The To Do list displays course assignments, quizzes, and discussions that you have not completed. To view your notifications, tap the Notifications icon. Notifications displays an overview of all course notifications, such as new assignment grades and course announcements. To view your Inbox, tap the Inbox icon. The Inbox displays all of your messages and allows you to create a new message. To return to your Dashboard, tap the Dashboard icon. Depending on your device, tapping the Dashboard icon may first take you to a previously viewed area within a course. To open your User Menu, tap the Menu icon. The User Menu allows you to view your user files, manage app settings, display grades on course cards, display a color overlay on course cards, get help with the app, change users, or log out of the app. On Android devices, the User Menu includes a link to manage your bookmarks. To display your grades or a color overlay in the Dashboard, tap the Show Grades button or Color Overlay button. Then close the User Menu to view your Dashboard. You will see your grades displayed and selected overlay color on each course card. To open your app settings, tap the Settings link in the Settings menu. You can view information about the app, manage your notification preferences, and pair with an observer. On iOS devices, the Settings menu also includes links to manage account preferences. Thanks for watching this Canvas Student App overview video. To learn more about Canvas, ask questions, or engage with other Canvas users, please visit community.canvaslms.com. Topics for All Users For general information, feature descriptions, and details on topics such as Canvas Mobile, Help, Calendar, Courses, Dashboard, ePortfolios, Files, Global Navigation, Inbox, Profile and User Settings, Rich Content Editor, and Web Services, visit the Canvas Basics Guide for all user roles.