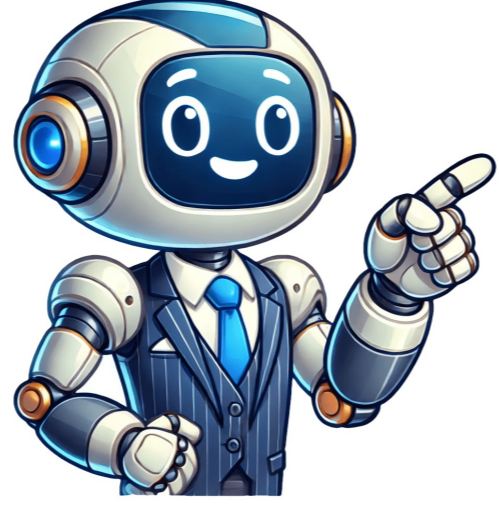


Click to prove
you're human



MATTRESS FIRM 300 INSTALLATION STEP 1 Remove the top of the shipping carton. Verify contents; inspect for damage. READ ALL INSTRUCTIONS BEFORE USING. WARNING: DUE TO THE RISK OF INJURY, TWO ADULTS ARE REQUIRED TO HANDLE AND MOVE THE ADJUSTABLE BASE. SETUP STEP 2 Cut zip-tie from the electrical power supply. Cut (2) zip-ties and remove mattress retainer (set aside) (FIGURE 1). CAUTION BE CAREFUL USING SHARP INSTRUMENTS. INJURY IS POSSIBLE IF TOOLS ARE NOT USED PROPERLY. WARNING PINCH POINT WARNING! KEEP HANDS AND FINGERS CLEAR WHEN SLIDING BASES TOGETHER. STEP 3 Carefully lift the base head section out of the shipping carton and place it on a clean surface (FIGURE 2). Remove the divider from the shipping carton. Carefully lift the base foot section out of shipping carton and place adjacent to the head section (FIGURE 2). Slide head and foot sections together making sure to align mounting holes (center of base sections) (FIGURE 2). STEP 4 Place a T-Spacer in between the mounting points (each side of the base). Line up the holes in the T-Spacers with the holes in the mounting points (FIGURE 3). Place a center support bracket over the mounting points on each side of the base. Insert carriage bolts through the square holes in the center support bracket. Install nuts on carriage bolts (FIGURE 3). HAND TIGHTENS. After all, hardware is installed, tighten all nuts using the provided wrench. STEP 5 Route FOOT MOTOR CABLE underneath the base frame and connect to HEAD MOTOR CABLE (FIGURE 4). 600 MODEL ONLY – Route FOOT MASSAGE MOTOR CABLE underneath the base frame and plug into control box (FIGURE 4). Extend electrical power cord out the head end of the base. WARNING POWER CORDS MUST NOT INTERFERE WITH ANY ADJUSTABLE BASE MECHANISMS. STEP 6 Screw (4) legs into the threaded inserts at the corners of the base frame (FIGURE 5). Screw (2) legs into the threaded inserts of the center support brackets (FIGURE 5). Push the pin in to adjust leg height (6 inches to 10 inches). Note: When adjusting legs, make sure the base sets level on the floor. STEP 7 Rotate the base over onto its legs. Remove remaining packaging. WARNING DUE TO THE RISK OF INJURY, TWO ADULTS ARE REQUIRED TO HANDLE AND MOVE THE ADJUSTABLE BASES. STEP 8 Install (3) batteries in the remote control. Plug the power cord into a power outlet. Note: An electrical surge protection device is recommended (not included). Operate remote control to test base functions (FIGURE 6) (see separate Syncing Guide). STEP 9 Lower base to flat position. STEP 10 Install the mattress retainer at the foot end of the base. Place one end of the mattress retainer into the outside hole of the left insert and place the other end into the outside hole of right insert (FIGURE 7). STEP 11 Place the mattress on the base to complete assembly. Note: If the adjustable base will not operate, refer to the Troubleshooting section of the owner's manual. To download a copy of the owner's manual, visit or call Mattress Firm at 844-628-8376. To register your adjustable base, please go to or call Mattress Firm at 844-628-8376. FAQ'S Can you use an adjustable base with a firm mattress? The short answer is yes. There are many mattresses that can work with adjustable beds. However, there are some mattresses that won't be compatible with this bed type. In general, all memory foam, latex, and any other non-innerspring mattress will work well with adjustable beds. What are the disadvantages of an adjustable bed? Cons: Disadvantages of Adjustable Beds Higher costs. Adjustable beds tend to be more expensive than traditional ones. Increased noise. Extreme heaviness. Restricted movement. Unique sizing categories. What causes an adjustable bed to stop working? Sometimes a circuit in your home's electrical wiring shorts out, causing the problem. Try using a different outlet nearby to see if it works. It is also possible that the bed's wiring is faulty and needs to be replaced. If your bed is under warranty, most retailers will replace the parts free of charge. Can an adjustable bed cause back pain? The simple answer is yes. Sleeping on an adjustable bed can worsen back pain. There are three main ways in which a home hospital bed can make back pain worse: The bed's adjustments are not used to distribute forces in a way to relieve pressure on affected areas of the back. Do adjustable beds need maintenance? Adjustable beds have motors, gears and moving parts that will eventually wear out and need to be repaired or replaced. The best adjustable beds come with warranties to help offset these costs, but you should know that the costs of maintaining an electric bed are typically more than that of a stationary one. Do adjustable beds need oiling? The lift motors are permanently lubricated and sealed no additional lubrication is required. Do not apply lubricant to lift motor lead screws or any nylon nuts or the base may inadvertently creep downward from the elevated position. Why is my adjustable bed so loud? An adjustable bed on a steel bed frame, wooden bed frame, wooden supports, or steel supports can cause excess noise due to the vibration of the framing. Eliminating as many points of contact as possible will cut down on excess noise. How do I connect my mattress Firm 300 remote? After five seconds it'll start to rapidly flash when it's flashing go ahead and press a button on the remote. Let go and press it again to connect How do I turn off the child lock on an ease remote? To disable child lock: Press and hold the FOOT UP and FOOT DOWN buttons together for approximately three (6) seconds. The remote backlight will flash twice. When the backlight goes away the remote is no longer in Child Lock. The remote and adjustable base will work normally. Why is my bed remote blinking? The remote backlight will flash twice. When the backlight goes away the remote is now in Child Lock. Pressing any buttons while in Child Lock will yield no movement to your adjustable base. Press and hold the FOOT UP and FOOT DOWN buttons together for approximately six (6) seconds. Is it OK to sleep on your side in zero gravity position? Zero gravity allows your spine to stay in alignment even when you are sleeping on your side. An adjustable base can also help alleviate stress on your shoulders that you may experience from sleeping on your side on a traditional mattress. Is it OK to leave adjustable bed in upright position? The beauty of an adjustable base is to elevate the mattress to your comfort level while you use it. For long-term durability reasons, we don't recommend storing your mattress in the elevated position when it isn't actively in use. Instead, make sure it is entirely flat. SETUP Remove top of shipping carton. Verify contents; inspect for damage. WARNING DUE TO RISK OF INJURY, TWO ADULTS ARE REQUIRED TO HANDLE AND MOVE ADJUSTABLE BASE. Cut zip-tie from electrical power supply. Cut (2) zip-ties and remove mattress retainer (set aside) (FIGURE 1) Carefully lift base head section out of shipping carton and place on clean surface (FIGURE 2). Remove the divider from shipping carton. Carefully lift base foot section out of shipping carton and place adjacent to head section (FIGURE 2). Slide head and foot sections together making sure to align mounting holes (center of base sections) (FIGURE 2). BE CAREFUL USING SHARP INSTRUMENTS. INJURY IS POSSIBLE IF TOOLS ARE NOT USED PROPERLY. PINCH POINT WARNING! KEEP HANDS AND FINGERS CLEAR WHEN SLIDING BASES TOGETHER. Place a T-Spacer in between the mounting points (each side of base). Line up the holes in the T-Spacers with the holes in the mounting points (FIGURE 3). Place a center support bracket over the mounting points on each side of base. Insert carriage bolts through the square holes in the center support bracket. Install nuts on carriage bolts (FIGURE 3). HAND TIGHTEN. After all hardware is installed, tighten all nuts using provided wrench. Route FOOT MOTOR CABLE underneath base frame and connect to HEAD MOTOR CABLE (FIGURE 4). 600 MODEL ONLY – Route FOOT MASSAGE MOTOR CABLE underneath base frame and plug into control box (FIGURE 4). Extend electrical power cord out head end of base. Continued Screw (4) legs into the threaded inserts at the corners of the base frame (FIGURE 5). Screw (2) legs into the threaded inserts of the center support brackets (FIGURE 5). Push pin in to adjust leg height (6 inches to 10 inches). Note: When adjusting legs, make sure base sets level on floor. Rotate base over onto its legs. Remove remaining packaging. Install (3) batteries in remote control. Plug power cord into power outlet. Note: An electrical surge protection device is recommended (not included). Operate remote control to test base functions (FIGURE 6) (see separate Syncing Guide) Lower base to flat position. Install the mattress retainer at the foot end of the base. Place one end of the mattress retainer into the outside hole of the left insert and place the other end into the outside hole of right insert (FIGURE 7). Place mattress on base to complete assembly. Note: If adjustable base will not operate, refer to the Troubleshooting section of the owner's manual. To download a copy of the owner's manual, visit or call Mattress Firm at 844-628-8376. To register your adjustable base, please go to or call Mattress Firm at 844-628-8376. REFERENCE LINK PDF Mattress Firm 300/60 K/CK Sectional Base User Manual