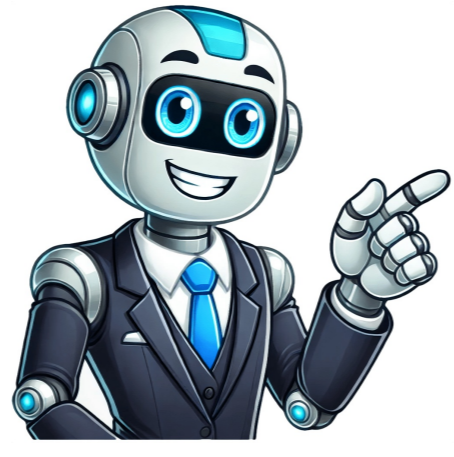


Click to prove  
you're human

























about it since China won't admit it. So just expose it out to media and the world.And of course with his family out from China 1st before expose.Talk like so easy to move intelligence agent's family out of the country Masa apply visa already bocor. He cant speak english Even scmp pun tak tahan a time when China is being systematically portrayed as a bogeyman trying to take over Australia's political system, the emergence in October of a self-proclaimed Chinese spyclaiming to have a trove of insider secrets to spill about China's intelligence operations should have been a dream come true for Canberra's top spooks. But instead of putting Wang Lijiang in a secure location for a thorough debriefing which could take months, the Australian Security Intelligence Organisation apparently took a back seat and allowed some enthusiastic journalists to lead the investigation on what has been billed as the most significant spy defection since 1954, when a Russian KGB officer sought political asylum in Australia. After just a few weeks, some Australian media outlets started to splash stories on the so-called "explosive" allegations of Chinese espionage in Australia and Beijing's meddling in the pro-democracy movement in Hong Kong and elections in Taiwan. However, significant doubts have since been cast on most of Wang's sensational claims, including by a former senior intelligence official in Taiwan, prominent people named in the reports, and China's state media, which started to dig into his background. This post has been edited by ohman: Dec 1 2019, 11:05 AM Like Quote Reply sniper on the roof Dec 2 2019, 04:14 PM Show posts by this member only | Post #20 20k VIP Club QUOTETAPEI (Taiwan News) — Two executives of a Hong Kong company alleged to be spies, including a suspected spymaster who a Chinese defector on Saturday (Nov. 23) said had recruited him, were arrested by investigators on Sunday (Nov. 24). .... Like Quote Reply « Next Oldest · Kopitiam · Next Newest » All Rights Reserved © 2002-2025 Vijandren Ramadass (~unite against racism~) Resetting your Unifi Wi-Fi password is crucial for maintaining a secure and reliable internet connection. By periodically updating your password, you can prevent unauthorized access to your network and ensure that only trusted devices are connected. Here are some easy steps to reset your Unifi Wi-Fi password securely: Key Takeaways: Use the Unifi Controller app or ISP app to access your router's settings. If you don't have an app, you can access your router's settings via a web browser by entering the IP address or visiting the manufacturer's website. Locate the option to change the network's password and update it to a secure one. Save the new settings to apply the changes. Reconnect all your devices using the updated password for enhanced security. Steps to Reset Your Unifi Wi-Fi Password Follow these simple steps to reset your Unifi Wi-Fi password and ensure a secure and uninterrupted internet experience. Use the Unifi Controller app or ISP app: Many routers come with a companion app that allows you to access your router's settings, including the network name and password. Download the app, log in, and look for the option to change your network's password. Access router settings via the web: If your router doesn't have an app or you prefer not to use it, you can access your router's settings through a web browser. Type your router's IP address into the URL bar or visit the manufacturer's website for specific instructions. Change the password in the settings: Once you're logged into the router's settings, locate the option to change the network's password. Update the password to a secure one. Save the new settings: After changing the password, look for a button to save your new settings. Click it to apply the changes. Reconnect devices with the new password: After changing the Wi-Fi password, you'll need to reconnect all your devices using the updated password. This may take some time, but it's important for security. Remember to update the password periodically and consider other security measures like upgrading firmware and adjusting device settings for better security. Conclusion By following these easy steps to reset your Unifi Wi-Fi password securely, you can enjoy a safer and more reliable internet connection. Remember to regularly update your password and explore other security measures to protect your network. 1. Use the Unifi Controller app or ISP app: Many routers come with a companion app that allows you to access your router's settings, including the network name and password. Download the app, log in, and look for the option to change your network's password. 2. Access router settings via the web: If your router doesn't have an app or you prefer not to use it, you can access your router's settings through a web browser. Type your router's IP address into the URL bar or visit the manufacturer's website for specific instructions. 3. Change the password in the settings: Once you're logged into the router's settings, locate the option to change the network's password. Update the password to a secure one. 4. Save the new settings: After changing the password, look for a button to save your new settings. Click it to apply the changes. 5. Reconnect devices with the new password: After changing the Wi-Fi password, you'll need to reconnect all your devices using the updated password. This may take some time, but it's important for security. To reconnect your devices with the new password, follow these easy steps for android wifi connection: 1. Go to the Wi-Fi settings on your Android device. 2. Select the network name (SSID) of your Wi-Fi network. 3. Enter the new Wi-Fi password and click 'Connect'. Following these easy steps for android wifi connection will ensure that all your devices are securely connected to your updated Wi-Fi network. This is an important step in maintaining the security of your home or business network. Remember to update the password periodically and consider other security measures like upgrading firmware and adjusting device settings for better security. You can reset your Unifi Wi-Fi password by using the Unifi Controller app or ISP app, or by accessing your router's settings via a web browser. If you are using the Unifi Controller app, simply navigate to the settings menu and select the option to change your Wi-Fi password. Alternatively, if you are using your ISP's app, look for a similar option within the settings. If you prefer to access your router's settings via a web browser, you can typically do this by entering the router's IP address into the address bar. For example, if you have a Vodafone router, you can search online for 'Vodafone Wi-Fi password reset' for specific instructions on how to do so. To access your router's settings through a web browser, type your router's IP address into the URL bar or visit the manufacturer's website for specific instructions. Once you're logged into the router's settings, you'll need to locate the option to change the network's password and update it to a secure one. After changing the password, look for a button to save your new settings. Click it to apply the changes. After changing the Wi-Fi password, you'll need to reconnect all your devices using the updated password for security reasons. It's important to periodically update your Wi-Fi password to ensure the security of your network. Consider updating it every few months or as needed. Yes, in addition to updating your password, you should also consider upgrading firmware and adjusting device settings for better security.