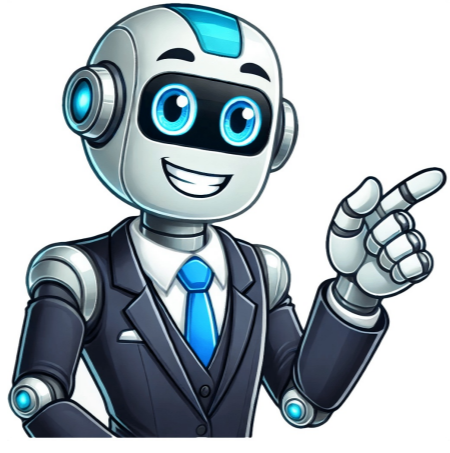


Continue



Home > Sports & Fitness > Multi-gyms > Pro Fitness Multi-gyms > Pro Fitness 237/4693 Multi-gym Need a manual for your Pro Fitness 237/4693 Multi-gym? Below you can view and download the PDF manual for free in English. This product currently has 2 frequently asked questions, 0 comments and has 0 votes. If this is not the manual you want, please contact us. Is your product defective and the manual offers no solution? Go to a Repair Caf for free repair services. No preview available, please use the link below to download the manual. Let us know what you think about the Pro Fitness 237/4693 Multi-gym by leaving a product rating. Want to share your experiences with this product or ask a question? Please leave a comment at the bottom of the page. Are you satisfied with the Pro Fitness 237/4693 Multi-gym? Yes No Be the first to rate this product We understand that its nice to have a paper manual for your Pro Fitness 237/4693 Multi-gym. You can always download the manual from our website and print it yourself. If you would like to have an original manual, we recommend you contact Pro Fitness. They might be able to provide an original manual. Are you looking for the manual of your Pro Fitness 237/4693 Multi-gym in a different language? Choose your preferred language on our homepage and search for the model number to see if we have it available. Brand Pro Fitness Model 237/4693 Category Multi-gyms File type PDF File size 6.3 MB All manuals for Pro Fitness Multi-gyms More manuals of Multi-gyms Our support team searches for useful product information and answers to frequently asked questions. If you find an inaccuracy in our frequently asked questions, please let us know by using our contact form. As an adult it is a good idea to perform moderately intensive exercise for a total of at least 2.5 hours a week. Ideally this is spread out over several days. This was helpful (13) Read more In general you can take a heart rate of 220 and deduct your age. So for a person aged 48 the maximum heart rate would be 220 minus 48 equaling 172. If you are unsure of your personal condition, be sure to consult your doctor. This was helpful (6) Read more This site uses cookies. You can read how we use them in our privacy policy. Powered by kartris 0 ratings 0% found this document useful (0 votes) 2K views This document provides assembly and user instructions for a Pro Fitness Home Gym. It contains 3 key points: 1) Important safety information is provided, including warnings to read all instructions enhanced title and description Save Save pro_fitness.pdf For Later 0% 0% found this document useful, undefined Issue 1 - 5/20/14 These instructions contain important information which will help you get the best from your equipment and ensure safe and correct assembly, use and maintenance. If you need help or have damaged or missing parts, call the Customer Helpline: 0345 604 0105. Assembly & User Instructions - Please keep for future reference Important Please read these instructions fully before assembly or use Pro Fitness Home Gym 237/4693 54% (26) 54% found this document useful (26 votes) 59K views Lay Flat Home Gym is designed and manufactured to comply with the latest (BS EN 13219) British and European Safety Standards. Product is guaranteed for DOMESTIC USE ONLY for a period of 1 Year enhanced title and description Save Save PRO POWER Lay Flat Home Gym Inst(DI)-08 For Later 54% 54% found this document useful, undefined

Pro power 3 station gym. Pro power compact home gym assembly instructions. Pro power multi gym assembly instructions manual pdf. Pro power home multi gym instructions. Pro power 3 station home gym instructions.