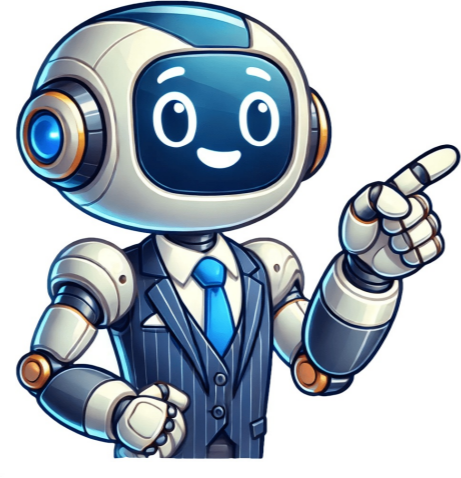


Click to verify





























In today's world, where cleanliness and maintenance are paramount, owning a pressure washer can be a game-changer. From tackling stubborn grime on driveways to rejuvenating outdoor furniture, pressure washers offer a powerful and efficient solution for various cleaning tasks. Among the many brands available, Kärcher stands out as a leader in pressure washer technology, known for its reliability and performance. The Kärcher K2, in particular, is a popular choice for homeowners due to its compact size, ease of use, and affordability. This comprehensive guide will walk you through the ins and outs of using a Kärcher K2 pressure washer, empowering you to tackle your cleaning projects with confidence. Unboxing and Assembling Your Kärcher K2 Components The Kärcher K2 Pressure Washer Unit Hose Lance Nozzle Set Power Cord Instruction Manual Before you begin using your Kärcher K2, carefully unpack all the components and familiarize yourself with their functions. Refer to the instruction manual for detailed assembly instructions. Generally, the process involves connecting the hose to the pressure washer unit, attaching the lance, and screwing on the desired nozzle. Safety Precautions Always wear safety glasses and closed-toe shoes when operating the pressure washer. Never point the lance at people, animals, or yourself. Be cautious when using the pressure washer on delicate surfaces, as it can cause damage. Disconnect the power cord before making any adjustments or cleaning the pressure washer. Connecting and Preparing Your Kärcher K2 Connecting to a Water Source The Kärcher K2 requires a water source for operation. Connect the hose to a garden faucet using a suitable adapter. Ensure the connection is secure to prevent leaks. Selecting the Right Nozzle The Kärcher K2 comes with a set of nozzles, each with a different spray pattern and pressure setting. Choose the appropriate nozzle based on the cleaning task at hand. For example, a wider spray pattern is suitable for general cleaning, while a narrower pattern is better for removing stubborn dirt. Adjusting the Pressure The pressure washer has a pressure adjustment dial that allows you to control the water flow. Start with a lower pressure setting and gradually increase it as needed. Avoid using the highest pressure setting on delicate surfaces. Operating Your Kärcher K2 Starting the Pressure Washer Plug the power cord into a grounded electrical outlet. Turn on the water supply and then press the start button on the pressure washer unit. Allow the pump to prime before beginning to clean. (See Also: Can You Use Pressure Washer on Composite Decking? Find Out Now) Cleaning Techniques Hold the lance firmly and keep it a safe distance from the surface you are cleaning. Move the lance in a sweeping motion, overlapping each pass slightly. Avoid staying in one spot for too long, as this can damage the surface. Cleaning Different Surfaces The Kärcher K2 can be used to clean a variety of surfaces, including driveways, patios, decks, fences, siding, and vehicles. Adjust the pressure and nozzle accordingly to avoid damage. Maintaining Your Kärcher K2 Cleaning the Pressure Washer After each use, rinse the pressure washer thoroughly with clean water. Remove any debris from the nozzle and lance. Storing the Pressure Washer Store the Kärcher K2 in a dry, sheltered location. Protect it from extreme temperatures and humidity. Winterizing the Pressure Washer If you live in a cold climate, it is important to winterize your pressure washer to prevent damage from freezing temperatures. Refer to the instruction manual for specific winterization instructions. (See Also: Do You Turn On Water Before Starting Pressure Washer? Properly First) Summary The Kärcher K2 pressure washer is a versatile and powerful tool that can make cleaning tasks easier and more efficient. By following the steps outlined in this guide, you can safely and effectively use your Kärcher K2 to tackle a wide range of cleaning projects around your home. Remember to always prioritize safety, choose the right nozzle and pressure setting, and maintain your pressure washer properly to ensure optimal performance and longevity. Frequently Asked Questions (FAQs) What is the maximum pressure output of the Kärcher K2? The Kärcher K2 has a maximum pressure output of 1,300 PSI (pounds per square inch). What types of cleaning tasks can the Kärcher K2 handle? The Kärcher K2 is suitable for various cleaning tasks, including cleaning driveways, patios, decks, fences, siding, vehicles, and outdoor furniture. It can also be used for light-duty cleaning tasks around the house, such as washing windows and cleaning gutters. How do I choose the right nozzle for my Kärcher K2? The Kärcher K2 comes with a set of nozzles, each with a different spray pattern and pressure setting. Choose the nozzle based on the cleaning task at hand. A wider spray pattern is suitable for general cleaning, while a narrower pattern is better for removing stubborn dirt. What is the warranty on the Kärcher K2? The Kärcher K2 comes with a 2-year limited warranty. (See Also: How to Adjust Water Pressure for Washing Machine? Achieve Perfect Clean) Where can I find replacement parts for my Kärcher K2? Replacement parts for the Kärcher K2 can be purchased online or at authorized Kärcher dealers. Kärcher is one of the most trusted brands when it comes to pressure washers, helping you make - everything from cars to the backyard squeaky clean. But they come with various attachments and advanced features - and you must know how to use Kärcher pressure washer models properly. There's no reason to get puzzled when it comes to using the Kärcher Pressure Washer for the first time. As long as you have a steady supply of water and power - and know how to change and use the right attachment, you'll be able to clean patios, cars, outdoor furniture, and more. Plus, you can even use detergent to enhance the cleaning performance. So keep reading to learn how to set up and use your Kärcher pressure washer. How Does a Kärcher Pressure Washer Work? Kärcher's pressure washers operate in the same way as other washers of this category. It uses a powerful electric motor that drives pistons to force water through a nozzle. The nozzle sprays water with great pressure to clean everything like clinging dirt, dust, stains, oil, etc. You can switch between different spraying modes according to your various cleaning needs. If you want to understand the mechanics of its working, you can check out the detailed description provided by Kärcher. Here's an image that shows the internal functions of the machine. How to Use Kärcher Pressure Washer - Step-by-Step Guide Take a look at the steps of using Kärcher pressure washers for effective cleaning, a. How to Pair Kärcher Pressure Washer with Trigger Gun To start using the Kärcher pressure washer from the Smart Control or Full Control Plus range, you must first sync the machine with the trigger gun. Here are the steps to do it. First, plug the device into the power socket to activate the pairing mode. It will stay on for 1 min. Next, press the "+" and the "-" buttons on the trigger gun simultaneously. Hold them for 5 seconds before the signal symbol begins blinking. After the successful pairing, pressure levels will be displayed. If the pairing is not completed, unplug the device from the power source and repeat the steps above. b) How to Set Up the Kärcher Pressure Washer To set up and start using the pressure washer, make sure to place it on a level surface first. Then, follow the steps below - Start by connecting the water hose pipe to the machine on one end and the water supply on the other. After that, attach the hose to the washer and the handgun on either side of the hose. Then, attach the cleaning/spraying attachment to the gun. Next, rotate the trigger lock to turn on the machine. This will activate the motor of the machine. Now, aim the spray lance at the floor and give the trigger a squeeze. Keep squeezing until it starts to spray water freely. Doing so will also remove airlocks. Here's a look at a Kärcher K2 set-up video that will give you a clearer idea about the process. c) How to Clean Using Kärcher Pressure Washer Once you have set the Kärcher washer, you can get cleaning - using the following steps - Attach the Vario Lance, a powerful spraying attachment, to use the high pressure of water alone for cleaning. You can also attach other accessories for nuanced cleaning. To adjust the water pressure, you have to turn the dial to adjust the pressure according to the pressure readings. Or, you may need to turn the nozzle forward to get high pressure - and backward for lower water pressure. Rotate the nozzle clockwise to activate the fan spray mode and use the machine for dirt or leaf removal. Turn the nozzle anti-clockwise for a pointed, high-pressure water output to increase pressure and remove stubborn stains and debris. d) How to Connect Hose to Kärcher Pressure Washer After connecting the pressure washer to the power unit, you can take the following steps to connect the water hose to the machine. Attach the Quick Connect adapter to the machine - and the Aqua Stop to the machine's inlet tightly. Connect the pipe's other end to the water supply. It can be a water bucket of water or a water butt tap. Here's a video that shows you how to connect the hose to the Kärcher K2 pressure washer. It shows how to connect the Kärcher pressure washer to the tap. e) How to Pack Away Kärcher Pressure Washer After Use After your cleaning job is completed, it's important to pack away the machine and store it properly. Here's how to do it. First, turn off the machine and cut out the water supply, detaching the hose pipe from the water. Release the pressure in the pipe by pressing the trigger. Then, remove the pipe from the machine to release any remaining water drops in the pump. Turn the machine on again for another 5 seconds and then shut it off before packing the machine up. Here's a video to explain the unplugging and packing process. e) How to Change Kärcher Attachments Attaching and changing Kärcher accessories can be super easy. Here's how to do it. To attach the cleaning/spraying attachment to the gun, push the bayonet connector into it. Then, twist it to lock the lance in place. Here's a quick look at how to do it. You can also attach other accessories like the soft surface brush, power scrubber, surface cleaner, dirt blaster, etc., following the same method. g) How to Use Detergent with Kärcher Pressure Washers The simplest way of using detergent with most Kärcher models is by using the foam nozzle. Fill the attachment bottle with detergent and reattach it to the nozzle. Then, connect the attachment to the trigger or extension lance. You can adjust the detergent hose pipe on the foam nozzle using the yellow knob and change the jet as needed. Some Kärcher washers are designed to accommodate a detergent bottle, like the Kärcher K3 model. Kärcher is a trusted brand with a wide range of products. You can use them to wash various outdoor areas, tools, devices, vehicles, and more easily. Once you learn how to set up and use these pressure washers, you'll easily handle the most stubborn cleaning needs! FAQ 1. Can you use a Kärcher patio cleaner? Kärcher T-Facer Surface Cleaner is a specialised patio cleaner attachment with twin jets. You can attach this accessory to the extension lance that comes with the machine. Then, move it across the patio surface to get a quick cleaning. Here's a video that shows how to use Kärcher patio cleaner. 2. How do you use Kärcher car shampoo? Kärcher's pressure washers are compatible with the Foam Nozzle attachment. Pour car shampoo into the nozzle's bottle and screw it to the attachment. When the nozzle is connected to the washer, the device will draw water and use the shampoo to project soapy water. Here's a look at how to use Kärcher car shampoo. 3. How do you use the Kärcher K4 washer? Kärcher K4 is an advanced pressure washer. Don't worry if you don't yet know how to use Kärcher K4. Connect it to the power outlet and the water supply. Then, you can rotate the spray lance to control the water pressure level. You can also use the dirt blaster for more powerful cleaning. Take a quick look at how to use the device. 4. How do you disconnect the high-pressure hose from Kärcher K2? You may need to remove the high-pressure hose pipe from Kärcher K2 to clean or replace it. Here's how to disconnect high-pressure hose from Kärcher K2. Lift the hose clip at the bottom and pull the hose. Then, follow the same with the yellow gun clip to extract the pipe completely. 5. How do you use detergent with Kärcher K4? If you're a new Kärcher washer user, you may be confused about how to use detergent with Kärcher K4 pressure washer. First, pull off the screw cap and the cover on top of the bottle. Then, attach it to the washer to wash everything from oil on a BBQ grill to grime on bikes. 6. How do you use a Kärcher K2 Compact Pressure Washer? To use the Kärcher K2 Compact Pressure Washer, you will first need to plug the water pipe into the back and screw the hose in the front. Then, plug the other end of the hose into the handgun. Next, connect the attachments per your cleaning needs and press the trigger to start washing. Home > Do-It-Yourself > Pressure Washers > Kärcher Pressure Washers > Kärcher K2 Pressure Washer Need a manual for your Kärcher K2 Pressure Washer? Below you can view and download the PDF manual for free in English. This product currently has 3 frequently asked questions, 9 comments and has 17 votes with an average product rating of 65/100. If this is not the manual you want, please contact us. Is your product defective and the manual offers no solution? Go to a Repair Café for free repair services. Let us know what you think about the Kärcher K2 Pressure Washer by leaving a product rating. Want to share your experiences with this product or ask a question? Please leave a comment at the bottom of the page. Are you satisfied with the Kärcher K2 Pressure Washer? Yes No We understand that it's nice to have a paper manual for your Kärcher K2 Pressure Washer. You can always download the manual from our website and print it yourself. If you would like to have an original manual, we recommend you contact Kärcher. They might be able to provide an original manual. Are you looking for the manual of your Kärcher K2 Pressure Washer in a different language? Choose your preferred language on our homepage and search for the model number to see if we have it available. Brand Kärcher Model K2 Category Pressure Washers File type PDF File size 4.61 MB All manuals for Kärcher Pressure Washers More manuals of Pressure Washers Our support team searches for useful product information and answers to frequently asked questions. If you find an inaccuracy in our frequently asked questions, please let us know by using our contact form. Yes, you can. Keep the pressure washer at least 20 centimeters from the car and don't exceed a pressure of 110 Bar. This was helpful (857) Read more A pressure washer is a product with parts through which water runs. Always empty it completely before storage to prevent frost damage. To ensure that no frost damage occurs, it is best to keep a pressure washer in a frost-free place. This was helpful (229) Read more PSI stands for Pound per Square Inch, indicating an amount of pressure. The more PSI a pressure washer can deliver, the more powerful it can clean. This was helpful (228) Read more Kärcher K2 - Pressure Washer Manual Use the high-pressure cleaner in private households only. The high-pressure cleaner is intended for cleaning machines, vehicles, buildings, tools, facades, terraces, garden machines etc. using a high-pressure water jet. Accessories and spare parts Only use original accessories and original spare parts. They ensure that the appliance will run fault-free and safely. Information on accessories and spare parts can be found at www.kaercher.com. Scope of delivery The scope of delivery for the appliance is shown on the packaging. Check the contents for completeness when unpacking. If any accessories are missing or in the event of any shipping damage, please notify your dealer. Description of the device Water connection coupling Water connection with integrated sieve Detergent suction hose Mains connection cable with mains plug Storage for high-pressure gun Storage for spray lance High-pressure hose Spray lance dirt blaster for stubborn soiling Spray lance with high-pressure nozzle for normal cleaning tasks High-pressure gun Clamp for connecting / disconnecting the high-pressure hose High-pressure gun lock Carrying handle Trigger "0/OFF" / "I/ON" High-pressure connection Type plate Screw \*\*Garden hose (fabric reinforced, diameter at least 1/2 inch (13 mm), length at least 7.5 m, with commercially available quick coupling) \*\* additionally required Safety devices Missing or modified safety devices! Safety devices are provided for your own protection. Do not bypass, remove or render ineffective any safety devices. Power switch The power switch prevents unintentional operation of the device. High-pressure gun lock The lock locks the lever of the high-pressure gun and prevents the device from starting unintentionally. Auto-stop function If the lever of the high-pressure gun is released, the pressure switch turns off the pump and the high-pressure jet stops. The pump switches on again when the lever is pressed. Symbols on the device Do not aim the high-pressure jet may at persons, animals, live electrical equipment or the device itself. Protect the device against frost. The device may not be connected to the public drinking water network. Installation Fit the supplied loose parts onto the device before starting up the device. Place the screws provided and matching screwdriver at the ready. Installing the handle Fit the carrying handle so that it latches into place. Mounting the storage option for the high pressure gun Push in the storage option for the high-pressure gun into the holder on the device. Hold the storage option in the end position and secure it using a screw. Installing the water connection coupling Screw the water connection coupling onto the water connection on the device. Initial startup Place the device on a flat and level surface. Unwind the high-pressure hose and eliminate any loops and twists. Connect the high-pressure hose to the device. Pull up the clamp on the coupling. Insert the high-pressure hose into the coupling. Press down the screw on the coupling. Connect the high-pressure hose to the high-pressure gun. Squeeze the clamp. Pull up the clamp. Insert the high-pressure hose. Press the clamp into the unit it latches into place. Check for a secure connection by pulling on the high-pressure hose. Plug the mains plug into a mains socket. Water supply For the connection values, see the type plate or chapter Technical data. Observe the water distribution company regulations. ATTENTION Damage through contaminated water Contamination in the water can damage the pump and the accessories. KÄRCHER recommends using the KÄRCHER water filter for protection(special accessory, order number 4.730-059). Connection to the water line ATTENTION Hose coupling with Aquastop on the water connection of the device Damage to the pump Never use a hose coupling with Aquastop on the water connection of the device. You can use an Aquastop coupling on the tap. Plug the garden hose onto the water connection coupling. Connect the garden hose to the water line. Open the water tap fully. Operation ATTENTION Pump running dry Damage to the device If pressure does not build up in the device after 2 minutes then switch the device off and proceed according to the instructions in chapter Troubleshooting guide. High-pressure operation ATTENTION Damage to painted or sensitive Surfaces can be damaged when the jet is too close to the surface or an unsuitable spray lance is used. Maintain a minimum spray distance of 30 cm when cleaning painted surfaces. Do not clean car tyres, paint or sensitive surfaces such as wood with the dirt blaster. Insert a spray lance into the high-pressure gun and lock it by turning it 90°. Switch the device on ("I/ON"). Unlock the lever of the high-pressure gun. Press the lever of the high-pressure gun. The device switches on. Operation with detergent Failure to adhere to the safety data sheet Incorrect handling of the detergent can seriously damage your health Observe the safety data sheet of the detergent manufacturer, in particular the instructions on personal protective equipment. Note KÄRCHER detergents ensure fault-free operation. Ask us for a consultation, request our catalogue or our detergent information sheets. Note Detergent can only be mixed into the jet at low pressure. Pull the desired length of the detergent suction hose out of the casing. Hang the detergent suction hose in a container with detergent solution. Disconnect the spray lance from the high-pressure gun and work using the high-pressure gun only. The detergent solution is mixed with the water jet during operation. Recommended cleaning method Spray the detergent sparingly on the dry surface and let it work for a while (do not let it dry). Rinse off the loosened dirt with the high-pressure jet. After operation with detergent Flush the device with clean water for approx. 30 seconds. Interrupting operation Release the lever of the high-pressure gun. The device switches off when the lever is released. The high pressure in the system is retained. Lock the lever of the high-pressure gun. Switch the device off "0/OFF" during work breaks longer than 5 minutes. Ending operation Pressure in the system Injuries from high-pressure water escaping uncontrollably Only disconnect the high-pressure hose from the high pressure gun or the device when the system is fully depressurised. Release the lever of the high-pressure gun. Close the water tap. Press the lever of the high-pressure gun for 30 seconds. The pressure remaining in the system is discharged. Release the lever of the high-pressure gun. Lock the lever of the high-pressure gun. Disconnect the device from the water supply. Switch off the device "0/OFF". Pull the mains plug out of the socket. Transport Failure to observe the weight Risk of injury and damage Be aware of the weight of the device during transportation. Carrying the device Lift up the device by the carrying handle, and carry it. Transporting the device in a vehicle Secure the device against slipping and tipping over. Storage Failure to observe the weight Risk of injury and damage Be aware of the weight of the device during storage. Storing the device Place the device on a level surface. Disconnect the high-pressure hose from the high pressure gun. Disconnect the spray lance from the high-pressure gun. Stow both spray lances and the high-pressure gun in the appropriate storage options. Disconnect the high-pressure hose from the device. Store the high-pressure hose on the device. Stow the mains connection cable on the device. Observe the additional notes before storing the device for a longer period of time, see chapter Care and service. Frost protection ATTENTION Danger of frost Incompletely emptied devices can be destroyed by frost. Completely empty the device and accessories. Protect the device from frost. The following requirements must be satisfied: The device is disconnected from the water supply. The high-pressure hose is removed. Switch the device on "I/ON". Wait for a maximum of 1 minute until no more water escapes from the high-pressure connection. Switch off the device. Store the device in a frost-protected room, together with all accessories. Care and service Danger of electric shock Injuries due to touching live parts Switch off the device. Remove the mains plug. The device is maintenance-free, i.e. you do not need to perform any maintenance work. Clean the sieve in the water connection ATTENTION Damaged sieve in the water connection Damage to the device through contaminated water Check the sieve for damage before inserting it in the water connection. If necessary, clean the sieve in the water connection. Remove the water connection coupling. Pull the sieve out. Clean the sieve under running water. Insert the sieve into the water connection. Clean the detergent filter Clean the detergent filter before longer periods of storage. Pull the filter off the detergent suction hose. Clean the filter under running water. Troubleshooting guide Malfunctions often have simple causes that you can remedy yourself using the following overview. When in doubt, or in the case of malfunctions not mentioned here, please contact your authorised Customer Service. Danger of electric shock Injuries due to touching live parts Switch off the device. Remove the mains plug. Device not running Press the lever of the high-pressure gun. The device switches on. Check that the voltage specified on the type plate corresponds to the voltage of the power source. Check the mains connection cable for damage. Device does not reach required pressure The water supply is too low. Open the water tap fully. Check the water inlet for an adequate flow rate. Check the setting at the spray lance. Check that the maximum suction height is not exceeded. The sieve in the water connection is dirty. Pull the sieve in the water connection out using flat pliers. Clean the sieve under running water. Illustration K Air is in the device. Vent the device: Switch on the device without a connected spray lance for a maximum of 2 minutes. Press the high-pressure gun and wait until the water escaping from the high-pressure gun is free of air bubbles. Connect the spray lance. Strong pressure fluctuations Clean the high-pressure nozzle: Use a needle to remove dirt from the nozzle drill. Rinse the high-pressure nozzle from the front with water. Check the water supply volume. Device leaking The device leaks a small amount for technical reasons. If the leak is severe, request authorised Customer Service. Detergent is not sucked in Disconnect the spray lance from the high-pressure gun and work using the high-pressure gun only. Clean the filter on the detergent suction hose. Check the detergent suction hose for kinks. Technical data Electrical connection Voltage V 220-240 Phase - 1 Frequency Hz 50-60 Current consumption A 6 Degree of protection IPX5 Protection class II Power protection (slow-blowing) A 10 Water connection Feed pressure (max.) MPa 1,2 Input amount (max.) °C 40 Input amount (min.) l/min 7 Device performance data Operating pressure MPa 11 Water flow rate l/min 5,2 Maximum flow rate l/min 6,0 Detergent flow rate l/min 0,3 High-pressure gun recoil force N 11 Dimensions and weights Typical operating weight kg 4,2 Length mm 189 Width mm 252 Height mm 445 Determined values in acc. with EN 60335-2-79 Hand-arm vibration value m/s2 1,6 Uncertainty K m/s2 0,7 Sound pressure level LpA dB(A) 76 Uncertainty KpA dB(A) 3 Sound power level LWA + uncertainty KWA dB(A) 92 Subject to technical modifications. Register your product www.kaercher.com/welcome Download manualHere you can download full pdf version of manual, it may contain additional safety instructions, warranty information, FCC rules, etc.Download KÄrcher K2 - Pressure Washer Manual