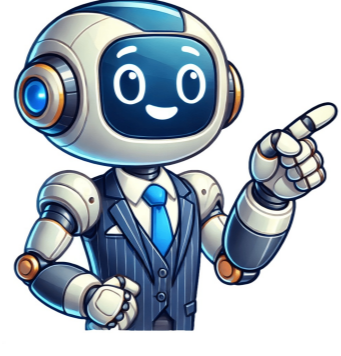


Click to prove  
you're human

































5 percent of 37,000 = 1,850/100 × 37,000 = 1,850 To calculate what is 5% of 37,000, we need to convert the percentage to a decimal and multiply it by the value. We need to find what is 5% of the given number. Convert 5% to a decimal by dividing by 100: 5% ÷ 100 = 0.05 Multiply the decimal 0.05 by the value 37,000: 0.05 × 37,000 = 1,850 Visual Representation: Imagine 5% as a portion of 37,000. You're taking 5% of the whole amount. Practical Application: For example, if you want to find a 5% discount on an item that costs \$37,000, you would calculate 5% of 37,000 dollars, which is 1,850 dollars. This is the amount of the discount. Percentage Value Result 1% 37,000 370 2% 37,000 740 3% 37,000 1,110 4% 37,000 1,480 6% 37,000 2,220 7% 37,000 2,590 8% 37,000 2,960 9% 37,000 3,330 11% 37,000 4,070 12% 37,000 4,440 13% 37,000 4,810 14% 37,000 5,180 15% 37,000 5,550 16% 37,000 5,920 17% 37,000 6,290 18% 37,000 6,660 19% 37,000 7,030 20% 37,000 7,400 25% 37,000 9,250 30% 37,000 11,100 35% 37,000 12,950 40% 37,000 14,800 45% 37,000 16,650 50% 37,000 18,500 55% 37,000 20,350 60% 37,000 22,200 65% 37,000 24,050 70% 37,000 25,900 75% 37,000 27,750 80% 37,000 29,600 85% 37,000 31,450 90% 37,000 33,300 95% 37,000 35,150 Percentage Calculator Using this tool you can find any percentage in three ways. So, we think you reached us looking for answers like: 1) What is 5 percent (%) of 37000? 2) 5 is what percent of 37000? Or may be: What is 5 percent of 37000? See the solutions to these problems below. Here are the solutions to the questions stated above: Always use this formula to find a percentage: % / 100 = Part / Whole replace the given values: 5 / 100 = Part / 37000 Cross multiply: 5 x 37000 = 100 x Part, or 185000 = 100 x Part Now, divide by 100 and get the answer: Part = 185000 / 100 = 1850 This question is equivalent to: "5 is what percent of 37000?" Or "What percent 5 is out of 37000?" Use again the same percentage formula: % / 100 = Part / Whole replace the given values: % / 100 = 5 / 37000 Cross multiply: % x 37000 = 5 x 100 Divide by 37000 to get the percentage: % = (5 x 100) / 37000 = 0.013513513513514% A shorter way to calculate x out of y You can easily find 5 is out of 37000, in one step, by simply dividing 5 by 37000, then multiplying the result by 100. So, 5 is out of 37000 = 5/37000 x 100 = 0.013513513513514% Sample Percent Calculations Please link to this page! Just right click on the above image, choose copy link address, then past it in your HTML. While every effort is made to ensure the accuracy of the information provided on this website, neither this website nor its authors are responsible for any errors or omissions. Therefore, the contents of this site are not suitable for any use involving risk to health, finances or property. Free Online Calculator to Calculate Various Percentages with Ease. [%] The Percent Calculator [%] Select Calculator: Percent Off | Percent Change | Tip Calculator | Fraction to Percent Play Online Games What is Percent? The percent symbol is "%" percent means hundred, percent is another name for a fraction with a denominator of 100. When a value is expressed as a percentage, it represents how much of the whole or total amount it represents out of 100. For example: 25 percent, written 25% = 25/100, it means 25 out of 100, or One of four equal parts (1/4, ¼, 0.25). Percentage Tricks Printable versionPrintable Percentage Tricks The formula for calculating a percentage is: In this formula, the "Part" refers to the portion or fraction of the whole that you want to express as a percentage, and the "Whole" refers to the total or complete value. For instance, if you have 30 red balls out of a total of 100 balls, you can calculate the percentage of red balls as: Percentage of red balls = (30 / 100) × 100 = 30% This means that 30% of the total balls are red. Examples: Most Common uses of percentages Percentage calculation is widely used in various fields and situations, including: They are also used in statistical analysis to represent relative frequencies, growth rates, or changes over time. Percentages are commonly used in financial calculations, such as calculating returns on investments, profit margins, inflation rates, and tax rates. They are essential for analyzing financial data, making financial decisions, and understanding economic indicators. Percentages play a crucial role in business and marketing. They are used to calculate market share, sales growth rates, conversion rates, and customer satisfaction scores. Percentages are also utilized in pricing strategies, sales promotions, and performance evaluations. Percentages are utilized in scientific research to express proportions, ratios, and changes in data. They are employed in fields like biology, chemistry, physics, and environmental sciences to represent concentrations, success rates, population growth rates, and experimental outcomes. Percentages are commonly used in educational contexts to assess students' performance and determine grades. They are used to calculate test scores, final grades, and grade point averages (GPAs). Percentages are also used in tracking attendance, completion rates, and progress. Percentages are employed in medical research and healthcare settings to express rates of disease prevalence, treatment effectiveness, mortality rates, and risk factors. They are crucial for interpreting medical statistics, conducting clinical trials, and monitoring public health indicators. Percentages are frequently used in sports to analyze performance metrics, such as shooting percentages in basketball, batting averages in baseball, or win percentages in team sports. They help in comparing athletes' achievements and evaluating their effectiveness. Percentages are commonly used in opinion polls and surveys to express the distribution of responses or the level of agreement/disagreement on specific questions. They are vital for understanding public opinion, conducting market research, and making informed decisions. Page 2 Percentage calculator to calculate 5% of a value. 5 Percent Five percent (5%) means 5 per 100 = 0.05. 5% is a fractional representation of a value, which signifies 5 parts out of 100. For example, if the value is 100, then 5% of that value would be 5 (100 multiplied by 5% or 0.05). 5% of 100 is 5100 × 100 = 5 The formula to calculate 5% of a value is: In this formula, "value" represents the number or quantity for which you want to find 5%. To calculate 5% of a value, you divide the value by 100 to get the decimal equivalent of 5% (which is 0.05), and then multiply it by the original value. You can use this formula to find 5% of any given value by substituting the desired value into the formula. Or you can use the 5% percentage trick below. For example, if you want to calculate 5% of 60: What is 5% of the total number of 60 balls? 5% of 60 = (5/100) \* 60 = 0.05 \* 60 = 3 So, 5% of 60 is equal to 3. 3 red balls are 5% of all 60 balls. Examples: Leave a Comment / By rramulitho / 09/05/2025 home / math / percentage calculator Please provide any two values below and click the "Calculate" button to get the third value. Percentage Calculator in Common Phrases Percentage Difference Calculator Percentage Change Calculator Please provide any two values below and click the "Calculate" button to get the third value. In mathematics, a percentage is a number or ratio that represents a fraction of 100. It is one of the ways to represent a dimensionless relationship between two numbers; other methods include ratios, fractions, and decimals. Percentages are often denoted by the symbol "%" written after the number. They can also be denoted by writing "percent" or "pct" after the number. For example, 35% is equivalent to the decimal 0.35, or the fractions . Percentages are computed by multiplying the value of a ratio by 100. For example, if 25 out of 50 students in a classroom are male, . The value of the ratio is therefore 0.5, and multiplying this by 100 yields: 0.5 × 100 = 50 In other words, the ratio of 25 males to students in the classroom is equivalent to 50% of students in the classroom being male. Percentage formula Although the percentage formula can be written in different forms, it is essentially an algebraic equation involving three values. P × V1 = V2 P is the percentage, V1 is the first value that the percentage will modify, and V2 is the result of the percentage operating on V1. The calculator provided automatically converts the input percentage into a decimal to compute the solution. However, if solving for the percentage, the value returned will be the actual percentage, not its decimal representation. EX: P × 30 = 1.5 P = = 0.05 × 100 = 5% If solving manually, the formula requires the percentage in decimal form, so the solution for P needs to be multiplied by 100 in order to convert it to a percent. This is essentially what the calculator above does, except that it accepts inputs in percent rather than decimal form. Percentage difference formula The percentage difference between two values is calculated by dividing the absolute value of the difference between two numbers by the average of those two numbers. Multiplying the result by 100 will yield the solution in percent, rather than decimal form. Refer to the equation below for clarification. Percentage Difference = × 100 EX: = = 0.5 = 50% Percentage change formula Percentage increase and decrease are calculated by computing the difference between two values and comparing that difference to the initial value. Mathematically, this involves using the absolute value of the difference between two values then dividing the result by the initial value, essentially calculating how much the initial value has changed. The percentage increase calculator above computes an increase or decrease of a specific percent of the input number. It basically involves converting a percent into its decimal equivalent, and either subtracting (decrease) or adding (increase) the decimal equivalent from and to 1, respectively. Multiplying the original number by this value will result in either an increase or decrease of the number by the given percent. Refer to the example below for clarification. EX: 500 increased by 10% (0.1) 500 × (1 + 0.1) = 550 500 decreased by 10% 500 × (1 - 0.1) = 450 Answer: 5% of 37000 is 1850. What is X Percent of Y Calculator What's 5% of 37000? The answer using our percentage calculator is that 5 percent of 37000 is 1850. Let's learn how to easily calculate 5% of 37000 with a step-by-step explanation. How to calculate what is 5 percent of 37000? To find out what 5 percent of 37000 is, follow these steps: Convert 5 percent to a decimal: 5% = 0.05 Use the formula: Result = 37000 × 0.05 = 1850 So, the answer is 1850. Find the other percentages of 5 Example Answer What is 1 percent of 37000?370 What is 2 percent of 37000?740 What is 3 percent of 37000?1110 What is 4 percent of 37000?1480 What is 5 percent of 37000?1850 What is 6 percent of 37000?2220 What is 7 percent of 37000?2590 What is 8 percent of 37000?2960 What is 9 percent of 37000?3330 What is 10 percent of 37000?3700 What is 11 percent of 37000?4070 What is 12 percent of 37000?4440 What is 13 percent of 37000?4810 What is 14 percent of 37000?5180 What is 15 percent of 37000?5550 What is 16 percent of 37000?5920 What is 17 percent of 37000?6290 What is 18 percent of 37000?6660 What is 19 percent of 37000?7030 What is 20 percent of 37000?7400 What is 21 percent of 37000?7770 What is 22 percent of 37000?8140 What is 23 percent of 37000?8510 What is 24 percent of 37000?8880 What is 25 percent of 37000?9250 What is 26 percent of 37000?9620 What is 27 percent of 37000?9990 What is 28 percent of 37000?10360 What is 29 percent of 37000?10730 What is 30 percent of 37000?11100 Latest percentage calculations What is 15 percent of 34900? What is 70 percent of 310? What is 10 percent of 369? What is 10 percent of 37000? What is 15 percent of 37000? What is 5 percent of 36950? 123% of 77056 379% of 53650 1357% of 64380 1355% of 91184 1188% of 43506 1699% of 69747 530% of 29836 1897% of 12222 1539% of 81237 976% of 68375 1652% of 27467 684% of 90000 1327% of 73121 1953% of 33505 74% of 49172 To easily calculate 5% of any amount (Five percent), follow these steps:Start by converting the percentage to a fraction. 5% can be represented as the fraction: 5/100.Multiply the original value by this fraction. For example, if you have a value of 100 and want to calculate 5% of it, use the following formula:Percentage = (Original Value × 5/100)Once you perform the calculation, the result will be 5% of the original amount.For instance, if the original value is 200 and you want to calculate 5% of it:Convert 5% to a fraction: 5/100.Multiply 200 × 5/100 = 10.The final result is 10, which represents 5% of 200.Using this method, you can easily calculate 5% of any amount you want.If you want to perform these calculations quickly and easily, you can use the Percentage Calculator below. This calculator provides an effective tool for accurately determining the percentage of any value. Use it now to simplify your calculations!Percentage Calculator 5% of Value or AmountLast Update: Sep 14, 2024 Something went wrong. Wait a moment and try again.