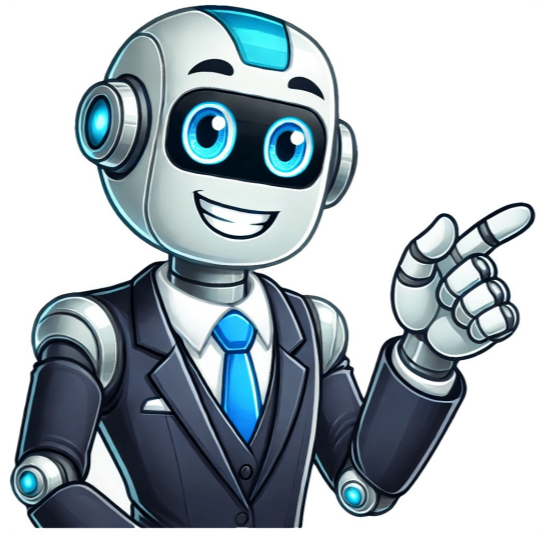


I'm not a robot























## Aluguel de moto balneário camboriú

In Balneário Camboriú, the summers are warm and oppressive, the winters are cool, and it is wet and partly cloudy year round. Over the course of the year, the temperature typically varies from 57°F to 84°F and is rarely below 49°F or above 89°F. Based on the tourism score, the best times of year to visit Balneário Camboriú for warm-weather activities are from early April to late June and from early August to late November. The warm season lasts for 3.7 months, from December 13 to April 5, with an average daily high temperature above 81°F. The hottest month of the year in Balneário Camboriú is February, with an average high of 84°F and low of 74°F. The cool season lasts for 3.4 months, from June 7 to September 21, with an average daily high temperature below 72°F. The coldest month of the year in Balneário Camboriú is July, with an average low of 58°F and high of 69°F. AverageJanFebMarAprMayJunJulAugSepOctNovDec High 83°F84°F83°F79°F74°F71°F69°F70°F71°F74°F78°F81°F Temp. 78°F79°F77°F74°F68°F64°F62°F64°F66°F70°F73°F76°F Low 73°F74°F72°F68°F63°F59°F58°F59°F62°F65°F69°F71°F The figure below shows you a compact characterization of the entire year of hourly average temperatures. The horizontal axis is the day of the year, the vertical axis is the hour of the day, and the color is the average temperature for that hour and day. Durban, KwaZulu-Natal, South Africa (4,746 miles away) is the far-away foreign place with temperatures most similar to Balneário Camboriú (view comparison). © OpenStreetMap contributors In Balneário Camboriú, the average percentage of the sky covered by clouds experiences mild seasonal variation over the course of the year. The clearer part of the year in Balneário Camboriú begins around March 7 and lasts for 6.6 months, ending around September 25. The clearest month of the year in Balneário Camboriú is April, during which on average the sky is clear, mostly clear, or partly cloudy 62% of the time. The cloudier part of the year begins around September 25 and lasts for 5.4 months, ending around March 7. The cloudiest month of the year in Balneário Camboriú is February, during which on average the sky is overcast or mostly cloudy 54% of the time. FractionJanFebMarAprMayJunJulAugSepOctNovDec Cloudier 52%54%42%38%40%42%41%39%44%50%47%48% Clearer

48%46%58%62%60%58%59%61%56%50%65%52% A wet day is one with at least 0.04 inches of liquid or liquid-equivalent precipitation. The chance of wet days in Balneário Camboriú varies significantly throughout the year. The wetter season lasts 5.9 months, from September 27 to March 22, with a greater than 43% chance of a given day being a wet day. The month with the most wet days in Balneário Camboriú is February, with an average of 16.4 days with at least 0.04 inches of precipitation. The drier season lasts 6.1 months, from March 22 to September 27. The month with the fewest wet days in Balneário Camboriú is August, with an average of 0.0 days with at least 0.04 inches of precipitation. Among wet days, we distinguish between those that experience rain alone, snow alone, or a mixture of the two. The month with the most days of rain alone in Balneário Camboriú is February, with an average of 16.4 days. Based on this categorization, the most common form of precipitation throughout the year is rain alone, with a peak probability of 60% on February 3. Days ofJanFebMarAprMayJunJulAugSepOctNovDec Rain 18.0d16.4d13.9d9.8d8.8d8.5d8.7d8.0d11.1d13.3d12.5d15.4d To show variation within the months and not just the monthly totals, we show the rainfall accumulated over a sliding 31-day period centered around each day of the year. Balneário Camboriú experiences significant seasonal variation in monthly rainfall. Rain falls throughout the year in Balneário Camboriú. The month with the most rain in Balneário Camboriú is January, with an average rainfall of 6.6 inches. The month with the least rain in Balneário Camboriú is April, with an average rainfall of 3.3 inches.

JanFebMarAprMayJunJulAugSepOctNovDec Rainfall 6.6"6.4"4.5"3.3"3.5"3.7"4.0"3.4"4.8"5.0"4.3"5.1" The length of the day in Balneário Camboriú varies over the course of the year. In 2025, the shortest day is June 20, with 10 hours, 26 minutes of daylight; the longest day is December 21, with 13 hours, 51 minutes of daylight. Hours ofJanFebMarAprMayJunJulAugSepOctNovDec Daylight 13.6h13.0h12.2h11.4h10.8h10.5h10.6h11.2h12.0h12.8h13.5h13.8h The earliest sunrise is at 5:12 AM on December 1, and the latest sunrise is 1 hour, 52 minutes later at 7:04 AM on July 2. The earliest sunset is at 5:28 PM on June 9, and the latest sunset is 1 hour, 45 minutes later at 7:13 PM on January 10. Daylight saving time (DST) is not observed in Balneário Camboriú during 2025. The figure below presents a compact representation of the sun's elevation (the angle of the sun above the horizon) and azimuth (its compass bearing) for every hour of every day in the reporting period. The horizontal axis is the day of the year and the vertical axis is the hour of the day. For a given day and hour of that day, the background color indicates the azimuth of the sun at that moment. The black isolines are contours of constant solar elevation. The figure below presents a compact representation of key lunar data for 2025. The horizontal axis is the day, the vertical axis is the hour of the day, and the colored areas indicate when the moon is above the horizon. The vertical gray bars (new Moons) and blue bars (full Moons) indicate key Moon phases. We base the humidity comfort level on the dew point, as it determines whether perspiration will evaporate from the skin, thereby cooling the body. Lower dew points feel drier and higher dew points feel more humid. Unlike temperature, which typically varies significantly between night and day, dew point tends to change more slowly, so while the temperature may drop at night, a muggy day is typically followed by a muggy night. Balneário Camboriú experiences extreme seasonal variation in the perceived humidity. The muggier period of the year lasts for 7.8 months, from October 5 to May 29, during which time the comfort level is muggy, oppressive, or miserable at least 31% of the time. The month with the most muggy days in Balneário Camboriú is January, with 28.8 days that are muggy or worse. The month with the fewest muggy days in Balneário Camboriú is July, with 3.5 days that are muggy or worse. JanFebMarAprMayJunJulAugSepOctNovDec Muggy days 28.8d26.8d28.1d21.4d13.0d6.0d3.5d5.1d7.1d12.8d19.1d25.5d This section discusses the wide-area hourly average wind vector (speed and direction) at 10 meters above the ground. The wind experienced at any given location is highly dependent on local topography and other factors, and instantaneous wind speed and direction vary more widely than hourly averages. The average hourly wind speed in Balneário Camboriú experiences mild seasonal variation over the course of the year. The windier part of the year lasts for 5.2 months, from September 5 to February 12, with average wind speeds of more than 9.0 miles per hour.

The brighter period of the year lasts for 3.2 months, from October 31 to February 5, with an average daily incident shortwave energy per square meter above 6.2 kWh. The calmest time of year lasts for 6.8 months, from February 12 to September 5. The calmest month of the year in Balneário Camboriú is June, with an average hourly wind speed of 7.8 miles per hour. JanFebMarAprMayJunJulAugSepOctNovDec Wind Speed (mph) 9.59.08.68.68.17.88.08.49.510.010.19.9 The predominant average hourly wind direction in Balneário Camboriú varies throughout the year. The wind is most often from the north for 5.2 months, from April 10 to September 17, with a peak percentage of 41% on August 11. The wind is most often from the east for 6.8 months, from September 17 to April 10, with a peak percentage of 45% on January 1. Balneário Camboriú is located near a large body of water (e.g., ocean, sea, or large lake). This section reports on the wide-area average surface temperature of that water. The average water temperature experiences some seasonal variation over the course of the year. The time of year with warmer water lasts for 3.7 months, from December 18 to April 10, with an average temperature above 76°F. The month of the year in Balneário Camboriú with the warmest water is February, with an average temperature of 79°F. The time of year with cooler water lasts for 3.3 months, from June 18 to September 28, with an average temperature below 67°F. The month of the year in Balneário Camboriú with the coolest water is August, with an average temperature of 64°F. WaterJanFebMarAprMayJunJulAugSepOctNovDec Temperature 78°F79°F78°F75°F71°F67°F64°F64°F66°F69°F73°F76°F To characterize how pleasant the weather is in Balneário Camboriú throughout the year, we compute two travel scores. The tourism score favors clear, rainless days with perceived temperatures between 65°F and 80°F. Based on this score, the best times of year to visit Balneário Camboriú for general outdoor tourist activities are from early April to late June and from early August to late November, with a peak score in the second week of May. The beach/pool score favors clear, rainless days with perceived temperatures between 75°F and 90°F. Based on this score, the best times of year to visit Balneário Camboriú for hot-weather activities are from early March to late April and from mid-November to early January, with a peak score in the last week of March. Methodology For each hour between 8:00 AM and 9:00 PM of each day in the analysis period (1980 to 2016), independent scores are computed for perceived temperature, cloud cover, and total precipitation. Those scores are combined into a single hourly composite score, which is then aggregated into days, averaged over all the years in the analysis period, and smoothed. Our cloud cover score is 10 for fully clear skies, falling linearly to 9 for mostly clear skies, and to 1 for fully overcast skies. Our precipitation score, which is based on the three-hour precipitation centered on the hour in question, is 10 for no precipitation, falling linearly to 9 for trace precipitation, and to 0 for 0.04 inches of precipitation or more. Our tourism temperature score is 0 for perceived temperatures below 50°F, rising linearly to 9 for 65°F, to 10 for 75°F, falling linearly to 9 for 80°F, and to 1 for 90°F or hotter. Our beach/pool temperature score is 0 for perceived temperatures below 65°F, rising linearly to 9 for 75°F, to 10 for 82°F, falling linearly to 9 for 90°F, and to 1 for 100°F or hotter. Definitions of the growing season vary throughout the world, but for the purposes of this report, we define it as the longest continuous period of non-freezing temperatures (≥ 32°F) in the year (the calendar year in the Northern Hemisphere, or from July 1 until June 30 in the Southern Hemisphere).

Temperatures in Balneário Camboriú are sufficiently warm year round that it is not entirely meaningful to discuss the growing season in these terms. We nevertheless include the chart below as an illustration of the distribution of temperatures experienced throughout the year. Growing degree days are a measure of yearly heat accumulation used to predict plant and animal development, and defined as the integral of warmth above a base temperature, discarding any excess above a maximum temperature. In this report, we use a base of 50°F and a cap of 86°F. This section discusses the total daily incident shortwave solar energy reaching the surface of the ground over a wide area, taking full account of seasonal variations in the length of the day, the elevation of the Sun above the horizon, and absorption by clouds and other atmospheric constituents. Shortwave radiation includes visible light and ultraviolet radiation. The average daily incident shortwave solar energy experiences significant seasonal variation over the course of the year. The brighter period of the year lasts for 3.2 months, from October 31 to February 5, with an average daily incident shortwave energy per square meter above 6.2 kWh. The darkest month of the year in Balneário Camboriú is June, with an average of 3.3 kWh. JanFebMarAprMayJunJulAugSepOctNovDec Solar Energy (kWh) 6.56.05.54.63.73.33.54.24.95.86.66.9 For the purposes of this report, the geographical coordinates of Balneário Camboriú are -26.991 deg latitude, -48.635 deg longitude, and 39 ft elevation. The topography within 2 miles of Balneário Camboriú contains very significant variations in elevation, with a maximum elevation change of 840 feet and an average elevation above sea level of 71 feet. Within 10 miles contains very significant variations in elevation (2,228 feet). Within 50 miles contains large variations in elevation (3,701 feet). The area within 2 miles of Balneário Camboriú is covered by water (36%), shrubs (17%), trees (16%), and sparse vegetation (11%), within 10 miles by water (51%) and trees (28%), and within 50 miles by water (55%) and trees (33%). This report illustrates the typical weather in Balneário Camboriú, based on a statistical analysis of historical hourly weather reports and model reconstructions from January 1, 1980 to December 31, 2016. Temperature and Dew Point There are 2 weather stations near enough to contribute to our estimation of the temperature and dew point in Balneário Camboriú. For each station, the records are corrected for the elevation difference between that station and Balneário Camboriú according to the International Standard Atmosphere , and by the relative change present in the MERRA-2 satellite-era reanalysis between the two locations. The estimated value at Balneário Camboriú is computed as the weighted average of the individual contributions from each station, with weights proportional to the inverse of the distance between Balneário Camboriú and a given station. The stations contributing to this reconstruction are: SBNF, 94% mi., -23 ftsBFL, 6%47 mi., -20 ft© OpenStreetMap contributors To get a sense of how much these sources agree with each other, you can view a comparison of Balneário Camboriú and the stations that contribute to our estimates of its temperature history and climate. Please note that each source's contribution is adjusted for elevation and the relative change present in the MERRA-2 data. Other Data All data relating to the Sun's position (e.g., sunrise and sunset) are computed using astronomical formulas from the book, Astronomical Algorithms 2nd Edition , by Jean Meeus. All other weather data, including cloud cover, precipitation, wind speed and direction, and solar flux, come from NASA's MERRA-2 Modern-Era Retrospective Analysis. This reanalysis combines a variety of wide-area measurements in a state-of-the-art global meteorological model to reconstruct the hourly history of weather throughout the world on a 50-kilometer grid. Land Use data comes from the Global Land Cover SHARE database , published by the Food and Agriculture Organization of the United Nations. Elevation data comes from the Shuttle Radar Topography Mission (SRTM) , published by NASA's Jet Propulsion Laboratory. Names, locations, and time zones of places and some airports come from the GeoNames Geographical Database . Time zones for airports and weather stations are provided by AskGeo.com . Maps are © OpenStreetMap contributors. Disclaimer The information on this site is provided as is, without any assurances as to its accuracy or suitability for any purpose. Weather data is prone to errors, outages, and other defects. We assume no responsibility for any decisions made on the basis of the content presented on this site. We draw particular cautious attention to our reliance on the MERRA-2 model-based reconstructions for a number of important data series.

While having the tremendous advantages of temporal and spatial completeness, these reconstructions: (1) are based on computer models that may have model-based errors, (2) are coarsely sampled on a 50 km grid and are therefore unable to reconstruct the local variations of many microclimates, and (3) have particular difficulty with the weather in some coastal areas, especially small islands. We further caution that our travel scores are only as good as the data that underpin them, that weather conditions at any given location and time are unpredictable and variable, and that the definition of the scores reflects a particular set of preferences that may not agree with those of any particular reader. Please review our full terms contained on our Terms of Service page. In Balneário Camboriú, the summers are warm and oppressive, the winters are cool, and it is wet and partly cloudy year round. Over the course of the year, the temperature typically varies from 57°F to 84°F and is rarely below 49°F or above 89°F. Based on the tourism score, the best times of year to visit Balneário Camboriú for warm-weather activities are from early April to late June and from early August to late November. The warm season lasts for 3.7 months, from December 13 to April 5, with an average daily high temperature above 81°F. The hottest month of the year in Balneário Camboriú is February, with an average high of 84°F and low of 74°F. The cool season lasts for 3.4 months, from June 7 to September 21, with an average daily high temperature below 72°F. The coldest month of the year in Balneário Camboriú is July, with an average low of 58°F and high of 69°F. AverageJanFebMarAprMayJunJulAugSepOctNovDec High 83°F84°F83°F79°F74°F71°F69°F70°F71°F74°F78°F81°F Temp. 78°F79°F77°F74°F68°F64°F62°F64°F66°F70°F73°F76°F Low 73°F74°F72°F68°F63°F59°F58°F59°F62°F65°F69°F71°F The figure below shows you a compact characterization of the entire year of hourly average temperatures. The horizontal axis is the day of the year, the vertical axis is the hour of the day, and the color is the average temperature for that hour and day. Durban, KwaZulu-Natal, South Africa (4,746 miles away) is the far-away foreign place with temperatures most similar to Balneário Camboriú (view comparison). © OpenStreetMap contributors In Balneário Camboriú, the average percentage of the sky covered by clouds experiences mild seasonal variation over the course of the year. The clearer part of the year in Balneário Camboriú begins around March 7 and lasts for 6.6 months, ending around September 25. The clearest month of the year in Balneário Camboriú is April, during which on average the sky is clear, mostly clear, or partly cloudy 62% of the time. The cloudier part of the year begins around September 25 and lasts for 5.4 months, ending around March 7. The cloudiest month of the year in Balneário Camboriú is February, during which on average the sky is overcast or mostly cloudy 54% of the time. FractionJanFebMarAprMayJunJulAugSepOctNovDec Cloudier 52%54%42%38%40%42%41%39%44%50%47%48% Clearer

52%44%42%38%40%42%41%39%44%50%47%48% Clearer 48%46%58%62%60%58%59%61%56%50%65%52% A wet day is one with at least 0.04 inches of liquid or liquid-equivalent precipitation. The chance of wet days in Balneário Camboriú varies significantly throughout the year. The wetter season lasts 5.9 months, from September 27 to March 22, with a greater than 43% chance of a given day being a wet day. The month with the most wet days in Balneário Camboriú is February, with an average of 16.4 days with at least 0.04 inches of precipitation. The drier season lasts 6.1 months, from March 22 to September 27. The month with the fewest wet days in Balneário Camboriú is August, with an average of 8.0 days with at least 0.04 inches of precipitation. Among wet days, we distinguish between those that experience rain alone, snow alone, or a mixture of the two. The month with the most days of rain alone in Balneário Camboriú is February, with an average of 16.4 days. Based on this categorization, the most common form of precipitation throughout the year is rain alone, with a peak probability of 60% on February 3. Days ofJanFebMarAprMayJunJulAugSepOctNovDec Rain 18.0d16.4d13.9d9.8d8.8d8.5d8.7d8.0d11.1d13.3d12.5d15.4d To show variation within the months and not just the monthly totals, we show the rainfall accumulated over a sliding 31-day period centered around each day of the year. Balneário Camboriú experiences significant seasonal variation in monthly rainfall. Rain falls throughout the year in Balneário Camboriú. The month with the most rain in Balneário Camboriú is January, with an average rainfall of 6.6 inches. The month with the least rain in Balneário Camboriú is April, with an average rainfall of 3.3 inches.

JanFebMarAprMayJunJulAugSepOctNovDec Rainfall 6.6"6.4"4.5"3.3"3.5"3.7"4.0"3.4"4.8"5.0"4.3"5.1" The length of the day in Balneário Camboriú varies over the course of the year. In 2025, the shortest day is June 20, with 10 hours, 26 minutes of daylight; the longest day is December 21, with 13 hours, 51 minutes of daylight. Hours ofJanFebMarAprMayJunJulAugSepOctNovDec Daylight 13.6h13.0h12.2h11.4h10.8h10.5h10.6h11.2h12.0h12.8h13.5h13.8h The earliest sunrise is at 5:12 AM on December 1, and the latest sunrise is 1 hour, 52 minutes later at 7:04 AM on July 2. The earliest sunset is at 5:28 PM on June 9, and the latest sunset is 1 hour, 45 minutes later at 7:13 PM on January 10. Daylight saving time (DST) is not observed in Balneário Camboriú during 2025. The figure below presents a compact representation of the sun's elevation (the angle of the sun above the horizon) and azimuth (its compass bearing) for every hour of every day in the reporting period. The horizontal axis is the day of the year and the vertical axis is the hour of the day. For a given day and hour of that day, the background color indicates the azimuth of the sun at that moment. The black isolines are contours of constant solar elevation. The figure below presents a compact representation of key lunar data for 2025. The horizontal axis is the day, the vertical axis is the hour of the day, and the colored areas indicate when the moon is above the horizon. The vertical gray bars (new Moons) and blue bars (full Moons) indicate key Moon phases. We base the humidity comfort level on the dew point, as it determines whether perspiration will evaporate from the skin, thereby cooling the body. Lower dew points feel drier and higher dew points feel more humid. Unlike temperature, which typically varies significantly between night and day, dew point tends to change more slowly, so while the temperature may drop at night, a muggy day is typically followed by a muggy night. Balneário Camboriú experiences extreme seasonal variation in the perceived humidity. The muggier period of the year lasts for 7.8 months, from October 5 to May 29, during which time the comfort level is muggy, oppressive, or miserable at least 31% of the time. The month with the most muggy days in Balneário Camboriú is January, with 28.8 days that are muggy or worse. The month with the fewest muggy days in Balneário Camboriú is July, with 3.5 days that are muggy or worse. JanFebMarAprMayJunJulAugSepOctNovDec Muggy days 28.8d26.8d28.1d21.4d13.0d6.0d3.5d5.1d7.1d12.8d19.1d25.5d This section discusses the wide-area hourly average wind vector (speed and direction) at 10 meters above the ground. The wind experienced at any given location is highly dependent on local topography and other factors, and instantaneous wind speed and direction vary more widely than hourly averages. The average hourly wind speed in Balneário Camboriú experiences mild seasonal variation over the course of the year. The windier part of the year lasts for 5.2 months, from September 5 to February 12, with average wind speeds of more than 9.0 miles per hour. The windiest month of the year in Balneário Camboriú is November, with an average hourly wind speed of 10.1 miles per hour. The calmest time of year lasts for 6.8 months, from February 12 to September 5. The calmest month of the year in Balneário Camboriú is June, with an average hourly wind speed of 7.8 miles per hour. JanFebMarAprMayJunJulAugSepOctNovDec Wind Speed (mph) 9.59.08.68.68.17.88.08.49.510.010.19.9 The predominant average hourly wind direction in Balneário Camboriú varies throughout the year. The wind is most often from the north for 5.2 months, from April 10 to September 17, with a peak percentage of 41% on August 11. The wind is most often from the east for 6.8 months, from September 17 to April 10, with a peak percentage of 45% on January 1. Balneário Camboriú is located near a large body of water (e.g., ocean, sea, or large lake). This section reports on the wide-area average surface temperature of that water. The average water temperature experiences some seasonal variation over the course of the year. The time of year with warmer water lasts for 3.7 months, from December 18 to April 10, with an average temperature above 76°F. The month of the year in Balneário Camboriú with the warmest water is February, with an average temperature of 79°F. The time of year with cooler water lasts for 3.3 months, from June 18 to September 28, with an average temperature below 67°F. The month of the year in Balneário Camboriú with the coolest water is August, with an average temperature of 64°F. WaterJanFebMarAprMayJunJulAugSepOctNovDec Temperature 78°F79°F78°F75°F71°F67°F64°F64°F66°F69°F73°F76°F To characterize how pleasant the weather is in Balneário Camboriú throughout the year, we compute two travel scores. The tourism score favors clear, rainless days with perceived temperatures between 65°F and 80°F. Based on this score, the best times of year to visit Balneário Camboriú for general outdoor tourist activities are from early April to late June and from early August to late November, with a peak score in the second week of May. The beach/pool score favors clear, rainless days with perceived temperatures between 75°F and 90°F. Based on this score, the best times of year to visit Balneário Camboriú for hot-weather activities are from early March to late April and from mid-November to early January, with a peak score in the last week of March. Methodology For each hour between 8:00 AM and 9:00 PM of each day in the analysis period (1980 to 2016), independent scores are computed for perceived temperature, cloud cover, and total precipitation. Those scores are combined into a single hourly composite score, which is then aggregated into days, averaged over all the years in the analysis period, and smoothed. Our cloud cover score is 10 for fully clear skies, falling linearly to 9 for mostly clear skies, and to 1 for fully overcast skies. Our precipitation score, which is based on the three-hour precipitation centered on the hour in question, is 10 for no precipitation, falling linearly to 9 for trace precipitation, and to 0 for 0.04 inches of precipitation or more. Our tourism temperature score is 0 for perceived temperatures below 50°F, rising linearly to 9 for 65°F, to 10 for 75°F, falling linearly to 9 for 80°F, and to 1 for 90°F or hotter. Our beach/pool temperature score is 0 for perceived temperatures below 65°F, rising linearly to 9 for 75°F, to 10 for 82°F, falling linearly to 9 for 90°F, and to 1 for 100°F or hotter. Definitions of the growing season vary throughout the world, but for the purposes of this report, we define it as the longest continuous period of non-freezing temperatures (≥ 32°F) in the year (the calendar year in the Northern Hemisphere, or from July 1 until June 30 in the Southern Hemisphere).

Temperatures in Balneário Camboriú are sufficiently warm year round that it is not entirely meaningful to discuss the growing season in these terms. We nevertheless include the chart below as an illustration of the distribution of temperatures experienced throughout the year. Growing degree days are a measure of yearly heat accumulation used to predict plant and animal development, and defined as the integral of warmth above a base temperature, discarding any excess above a maximum temperature. In this report, we use a base of 50°F and a cap of 86°F. This section discusses the total daily incident shortwave solar energy reaching the surface of the ground over a wide area, taking full account of seasonal variations in the length of the day, the elevation of the Sun above the horizon, and absorption by clouds and other atmospheric constituents. Shortwave radiation includes visible light and ultraviolet radiation. The average daily incident shortwave solar energy experiences significant seasonal variation over the course of the year. The brighter period of the year lasts for 3.2 months, from October 31 to February 5, with an average daily incident shortwave energy per square meter above 6.2 kWh. The brightest month of the year in Balneário Camboriú is December, with an average of 6.9 kWh. The darker period of the year lasts for 2.9 months, from May 8 to August 6, with an average daily incident shortwave energy per square meter below 3.9 kWh. The darkest month of the year in Balneário Camboriú is June, with an average of 3.3 kWh. JanFebMarAprMayJunJulAugSepOctNovDec Solar Energy (kWh) 6.56.05.54.63.73.33.54.24.95.86.66.9 For the purposes of this report, the geographical coordinates of Balneário Camboriú are -26.991 deg latitude, -48.635 deg longitude, and 39 ft elevation. The topography within 2 miles of Balneário Camboriú contains very significant variations in elevation, with a maximum elevation change of 840 feet and an average elevation above sea level of 71 feet. Within 10 miles contains very significant variations in elevation (2,228 feet). Within 50 miles contains large variations in elevation (3,701 feet). The area within 2 miles of Balneário Camboriú is covered by water (36%), shrubs (17%), trees (16%), and sparse vegetation (11%), within 10 miles by water (51%) and trees (28%), and within 50 miles by water (55%) and trees (33%). This report illustrates the typical weather in Balneário Camboriú, based on a statistical analysis of historical hourly weather reports and model reconstructions from January 1, 1980 to December 31, 2016. Temperature and Dew Point There are 2 weather stations near enough to contribute to our estimation of the temperature and dew point in Balneário Camboriú. For each station, the records are corrected for the elevation difference between that station and Balneário Camboriú according to the International Standard Atmosphere , and by the relative change present in the MERRA-2 satellite-era reanalysis between the two locations. The estimated value at Balneário Camboriú is computed as the weighted average of the individual contributions from each station, with weights proportional to the inverse of the distance between Balneário Camboriú and a given station. The stations contributing to this reconstruction are: SBNF, 94% mi., -23 ftsBFL, 6%47 mi., -20 ft© OpenStreetMap contributors To get a sense of how much these sources agree with each other, you can view a comparison of Balneário Camboriú and the stations that contribute to our estimates of its temperature history and climate. Please note that each source's contribution is adjusted for elevation and the relative change present in the MERRA-2 data. Other Data All data relating to the Sun's position (e.g., sunrise and sunset) are computed using astronomical formulas from the book, Astronomical Algorithms 2nd Edition , by Jean Meeus. All other weather data, including cloud cover, precipitation, wind speed and direction, and solar flux, come from NASA's MERRA-2 Modern-Era Retrospective Analysis. This reanalysis combines a variety of wide-area measurements in a state-of-the-art global meteorological model to reconstruct the hourly history of weather throughout the world on a 50-kilometer grid. Land Use data comes from the Global Land Cover SHARE database , published by the Food and Agriculture Organization of the United Nations. Elevation data comes from the Shuttle Radar Topography Mission (SRTM) , published by NASA's Jet Propulsion Laboratory. Names, locations, and time zones of places and some airports come from the GeoNames Geographical Database . Time zones for airports and weather stations are provided by AskGeo.com . Maps are © OpenStreetMap contributors. Disclaimer The information on this site is provided as is, without any assurances as to its accuracy or suitability for any purpose. Weather data is prone to errors, outages, and other defects. We assume no responsibility for any decisions made on the basis of the content presented on this site. We draw particular cautious attention to our reliance on the MERRA-2 model-based reconstructions for a number of important data series.

While having the tremendous advantages of temporal and spatial completeness, these reconstructions: (1) are based on computer models that may have model-based errors, (2) are coarsely sampled on a 50 km grid and are therefore unable to reconstruct the local variations of many microclimates, and (3) have particular difficulty with the weather in some coastal areas, especially small islands. We further caution that our travel scores are only as good as the data that underpin them, that weather conditions at any given location and time are unpredictable and variable, and that the definition of the scores reflects a particular set of preferences that may not agree with those of any particular reader. Please review our full terms contained on our Terms of Service page. In Balneário Camboriú, the summers are warm and oppressive, the winters are cool, and it is wet and partly cloudy year round. Over the course of the year, the temperature typically varies from 57°F to 84°F and is rarely below 49°F or above 89°F. Based on the tourism score, the best times of year to visit Balneário Camboriú for warm-weather activities are from early April to late June and from early August to late November. The warm season lasts for 3.7 months, from December 13 to April 5, with an average daily high temperature above 81°F. The hottest month of the year in Balneário Camboriú is February, with an average high of 84°F and low of 74°F. The cool season lasts for 3.4 months, from June 7 to September 21, with an average daily high temperature below 72°F. The coldest month of the year in Balneário Camboriú is July, with an average low of 58°F and high of 69°F. AverageJanFebMarAprMayJunJulAugSepOctNovDec High 83°F84°F83°F79°F74°F71°F69°F70°F71°F74°F78°F81°F Temp. 78°F79°F77°F74°F68°F64°F62°F64°F66°F70°F73°F76°F Low 73°F74°F72°F68°F63°F59°F58°F59°F62°F65°F69°F71°F The figure below shows you a compact characterization of the entire year of hourly average temperatures. The horizontal axis is the day of the year, the vertical axis is the hour of the day, and the color is the average temperature for that hour and day. Durban, KwaZulu-Natal, South Africa (4,746 miles away) is the far-away foreign place with temperatures most similar to Balneário Camboriú (view comparison). © OpenStreetMap contributors In Balneário Camboriú, the average percentage of the sky covered by clouds experiences mild seasonal variation over the course of the year. The clearer part of the year in Balneário Camboriú begins around March 7 and lasts for 6.6 months, ending around September 25. The clearest month of the year in Balneário Camboriú is April, during which on average the sky is clear, mostly clear, or partly cloudy 62% of the time. The cloudier part of the year begins around September 25 and lasts for 5.4 months, ending around March 7. The cloudiest month of the year in Balneário Camboriú is February, during which on average the sky is overcast or mostly cloudy 54% of the time. FractionJanFebMarAprMayJunJulAugSepOctNovDec Cloudier 52%54%42%38%40%42%41%39%44%50%47%48% Clearer